

BALDOR • RELIANCE

Customer information packet

VHEM3313T

10HP, 1760RPM, 3PH, 60HZ, 215HP, 0748M, ODP, F1

Class - None

Division - Not Applicable

Specifications

| | |
|--------------------------------|--|
| Enclosure | ODP |
| Frame | 215HP |
| Frame Material | Iron |
| Frequency | 60.00 Hz |
| Haz Area Class and Group | None |
| Haz Area Division | Not Applicable |
| Motor Letter Type | Three Phase |
| Output @ Frequency | 10.000 HP @ 60 HZ |
| Phase | 3 |
| Synchronous Speed @ Frequency | 1800 RPM @ 60 HZ |
| Voltage @ Frequency | 460.0 V @ 60 HZ 230.0 V @ 60 HZ |
| Agency Approvals | CSA CSA EEV UR |
| Ambient Temperature | 40 °C |
| Auxillary Box | No Auxillary Box |
| Auxillary Box Lead Termination | None |
| Base Indicator | No Mounting |
| Bearing Grease Type | Polyrex EM (-20F +300F) |
| Blower | None |
| Current @ Voltage | 25.800 A @ 230.0 V 26.800 A @ 208.0 V 12.900 A @ 460.0 V |
| Design Code | A |
| Drip Cover | Drip Cover |
| Duty Rating | CONT |
| Efficiency @ 100% Load | 91.7 % |
| Electrically Isolated Bearing | Not Electrically Isolated |
| Feedback Device | NO FEEDBACK |
| Front Face Code | Standard |
| Front Shaft Indicator | None |

Part detail

| | |
|--------------|------------|
| Revision | G |
| Type | AC |
| Mech. spec. | 07K218 |
| Base | |
| Status | NLA/A |
| Elec. spec. | 07WGY921 |
| Layout | 07LYK218 |
| Eff. date | 04-05-2022 |
| CD Diagram | CD0005 |
| Poles | 04 |
| Leads | 9#14 |
| Proprietary | False |
| Created date | 07-07-2015 |

| | |
|-------------------------------|-----------------------|
| Heater Indicator | No Heater |
| High Voltage Full Load Amps | 12.9 a |
| Insulation Class | F |
| Inverter Code | Not Inverter |
| KVA Code | H |
| Lifting Lugs | Vertical Lifting Lugs |
| Locked Bearing Indicator | Locked Bearing |
| Motor Lead Exit | Ko Box |
| Motor Lead Quantity/Wire Size | 9 @ 14 AWG |
| Motor Lead Termination | Flying Leads |
| Motor Standards | NEMA |
| Motor Type | 0748M |
| Mounting Arrangement | F1 |
| Number of Poles | 4 |
| Overall Length | 23.73 IN |
| Power Factor | 79 |
| Product Family | Weather Proof |
| Pulley End Bearing Type | Ball |
| Pulley Face Code | P-Base |
| Pulley Shaft Indicator | P-Base Groove & Key |
| Rodent Screen | None |
| Service Factor | 1.15 |
| Shaft Diameter | 1.125 IN |
| Shaft Extension Location | Pulley End |
| Shaft Ground Indicator | No Shaft Grounding |
| Shaft Rotation | Reversible |
| Shaft Slinger Indicator | Shaft Slinger |
| Speed | 1760 rpm |
| Speed Code | Single Speed |
| Starting Method | Direct on line |
| Thermal Device - Bearing | None |
| Thermal Device - Winding | None |
| Vibration Sensor Indicator | No Vibration Sensor |
| Winding Thermal 1 | None |

Winding Thermal 2

None

Nameplate

| NP1267L | | | | | | | | | |
|---------------------|--------------|-------------|------|------------|---|-----------|---|--|--|
| CAT.NO. | VHEM3313T | | | | | | | | |
| SPEC. | 07K218Y921G1 | | | | | | | | |
| HP | 10 | | | | | | | | |
| VOLTS | 230/460 | | | | | | | | |
| AMP | 25.8/12.9 | | | | | | | | |
| RPM | 1760 | | | | | | | | |
| FRAME | 215HP | HZ | 60 | PH | 3 | | | | |
| SER.F. | 1.15 | CODE | H | DES | A | CL | F | | |
| NEMA-NOM-EFF | 91.7 | PF | 79 | | | | | | |
| RATING | 40C AMB-CONT | | | | | | | | |
| CC | 010A | | | | | | | | |
| DE | 6309 | ODE | 6206 | | | | | | |
| ENCL | ODP | SN | | | | | | | |

Parts list

| Part number | Description | Quantity |
|-------------|--|----------|
| SA303723 | SA 07K218Y921G1 | 1.000 ea |
| RA290865 | RA 07K218Y921G1 | 1.000 ea |
| HW3201A05 | 3/8-16 EYEBOLT | 1.000 ea |
| 09CB3002A19 | CB MACH - 1.50 N.P.T. LEAD HOLE | 1.000 ea |
| 09GS1000 | GASKET-CONDUIT BOX, 1/16 THICK LEXIDE | 1.000 ea |
| 10XN2520A12 | 1/4-20 X 3/4 HEX HEAD CAP | 4.000 ea |
| HW1001A25 | LOCKWASHER 1/4, ZINC PLT .493 OD, .255 I | 4.000 ea |
| 59XW2520G07 | .25-20X.44,HEX SER WSHR,TAPTITE 2,GREEN | 1.000 ea |
| 07EP1200A01 | FRONT END PLATE,MACH | 1.000 ea |
| 07AD2000 | AIR DEFLECTOR, 307 OPEN P-BASE | 1.000 ea |
| 51XT0832A08 | 8-32 X 1/2 TY23 HXWS SLDSR | 3.000 ea |
| HW1001A08 | WASHER, #8 SPLT LK, ZN | 3.000 ea |
| 10XN3816A60 | 3/8-16 X 3-3/4 HEX HD CAPSCREW,GRADE 2,Z | 2.000 ea |
| HW1001A38 | LOCKWASHER 3/8, ZINC PLT .688 OD, .382 I | 2.000 ea |
| 09CB3501SP | CONDUIT BOX LID FOR 09CB3001 & 09CB3002 | 1.000 ea |
| HW4500A03 | GREASE FITTING, .125 NPT 1610(ALEMITE) 8 | 1.000 ea |
| HW4500A17 | 317400 ALEMITE GREASE RELIEF | 1.000 ea |
| HW5100A06 | W2420-025 WVY WSHR (WB) | 1.000 ea |
| 07EP1505A02 | SPL PU E.P. MACH, W/6309 BRG. | 1.000 ea |
| HW4600B53 | SEAL 1.688 X 2.275 X 0.312 SINGLE LIP DB | 1.000 ea |
| HW4500A03 | GREASE FITTING, .125 NPT 1610(ALEMITE) 8 | 1.000 ea |
| HW4500A17 | 317400 ALEMITE GREASE RELIEF | 1.000 ea |
| HW4500A20 | 1/8NPT SL PIPE PLUG | 1.000 ea |
| 10XN2520A56 | 1/4-20X 3 1/2 HEX HD CAP X | 2.000 ea |
| HW1001A25 | LOCKWASHER 1/4, ZINC PLT .493 OD, .255 I | 2.000 ea |
| HW4600B44 | V-RING SLINGER 1.500 X 1.810 X .28 VITON | 1.000 ea |
| 07FH1500A01 | DRIP COVER 307 OPEN P-BASE MTRS | 1.000 ea |
| HW3201A10 | .38-16 EYEBOLT W/4.50 SHANK | 2.000 ea |
| HW1000A38 | WASHER, 3/8" FLAT, SAE Z/P | 2.000 ea |
| 10XN3816A44 | 3/8-16 X 2 3/4 HEX HD CAP SCREW | 4.000 ea |
| HW1001A38 | LOCKWASHER 3/8, ZINC PLT .688 OD, .382 I | 4.000 ea |

| | | |
|-------------|--|----------|
| 09GS1013SP | GS FOR 09CB3501, 12CB1500 & 12CB1503 LID | 1.000 ea |
| 51XW2520A12 | .25-20 X .75, TAPTITE II, HEX WSHR SLTD | 2.000 ea |
| HW1001A25 | LOCKWASHER 1/4, ZINC PLT .493 OD, .255 I | 2.000 ea |
| HW2501E17 | .250 SQUARE X 1.875 LONG LOW CARBON STEE | 1.000 ea |
| HA7000A02 | KEY RETAINER RING, 1 1/8 DIA, 1 3/8 DIA | 1.000 ea |
| 85XU0407S04 | 4X1/4 U DRIVE PIN STAINLESS | 2.000 ea |
| LB1386 | WARNING LABEL FOR MOTORS WITH EYENUTS | 1.000 ea |
| MJ1000A02 | GREASE, POLYREX EM EXXON | 0.050 lb |
| MG1025G29 | WILKOFAS, 789.229, DARK CHARCOAL GRAY | 0.036 ga |
| LC0005E01 | CONN.DIA./WARNING LABEL (LC0005/LB1119N) | 1.000 ea |
| NP1267L | SS SUPER-E UL EEV CC NEMA PREM LASER ETC | 1.000 ea |
| 07PA1011 | PKG GRP, 07 CAST IRON PK1181 | 1.000 ea |
| 10XL3808A28 | 3/8 X 1 3/4" LAG SCREW | 2.000 ea |
| MN416A01 | TAG-INSTAL-MAINT no wire (2500bx)4/22 | 1.000 ea |

AC Induction Motor Performance Data

Record # 51689

Typical performance - not guaranteed values

| Winding: 07WGY921-R003 | | Type: 0748M | Enclosure: ODP |
|------------------------|-------------------|--|-------------------------|
| Nameplate Data | | 460 V, 60 Hz: High Voltage Connection | |
| Rated Output (HP) | 10 | Full Load Torque | 29.8 LB-FT |
| Volts | 230/460 | Start Configuration | direct on line |
| Full Load Amps | 25.8/12.9 | Breakdown Torque | 98.2 LB-FT |
| R.P.M. | 1760 | Pull-up Torque | 60 LB-FT |
| Hz | 60 Phase | Locked-rotor Torque | 66.5 LB-FT |
| NEMA Design Code | A KVA Code | Starting Current | 110 A |
| Service Factor (S.F.) | 1.15 | No-load Current | 6.28 A |
| NEMA Nom. Eff. | 91.7 Power Factor | Line-line Res. @ 25°C | 0.935 Ω |
| Rating - Duty | 40C AMB-CONT | Temp. Rise @ Rated Load | 62°C |
| S.F. Amps | | Temp. Rise @ S.F. Load | 76°C |
| | | Locked-rotor Power Factor | 37 |
| | | Rotor inertia | 1.18 LB-FT ² |

Load Characteristics 460 V, 60 Hz, 10 HP

| % of Rated Load | 25 | 50 | 75 | 100 | 125 | 150 | S.F. |
|-----------------|------|------|------|------|------|------|------|
| Power Factor | 38 | 60 | 72 | 79 | 82 | 84 | 81 |
| Efficiency | 88.2 | 92.2 | 92.5 | 92.1 | 91.2 | 90.3 | 91.6 |
| Speed | 1791 | 1782 | 1773 | 1765 | 1754 | 1744 | 1758 |
| Line amperes | 6.89 | 8.41 | 10.5 | 12.9 | 15.6 | 18.6 | 14.5 |

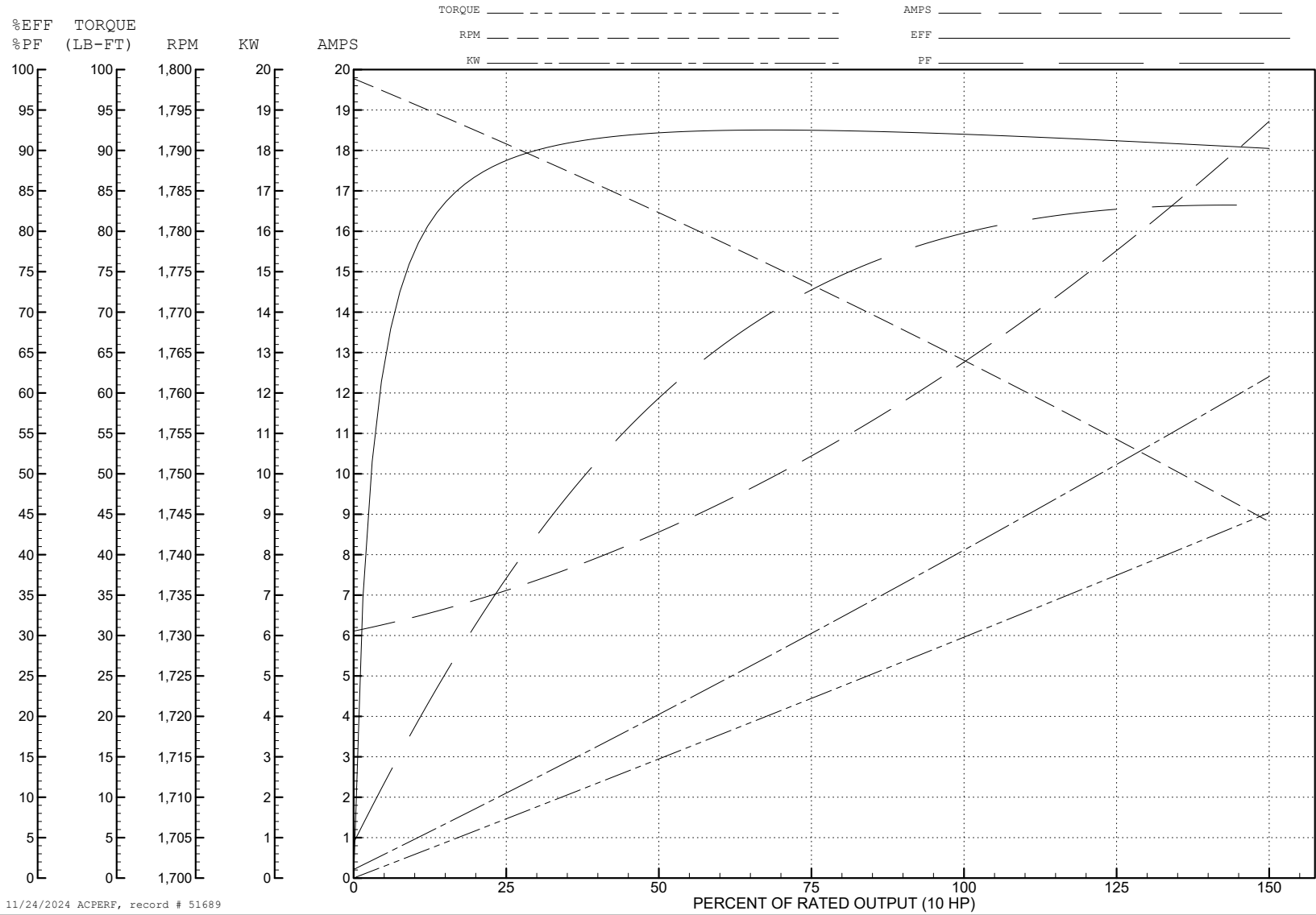
ABB Motors and Mechanical Inc.

WINDING # 07WGY921

Typical performance - not guaranteed values.

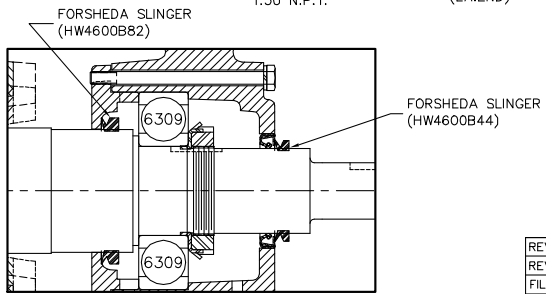
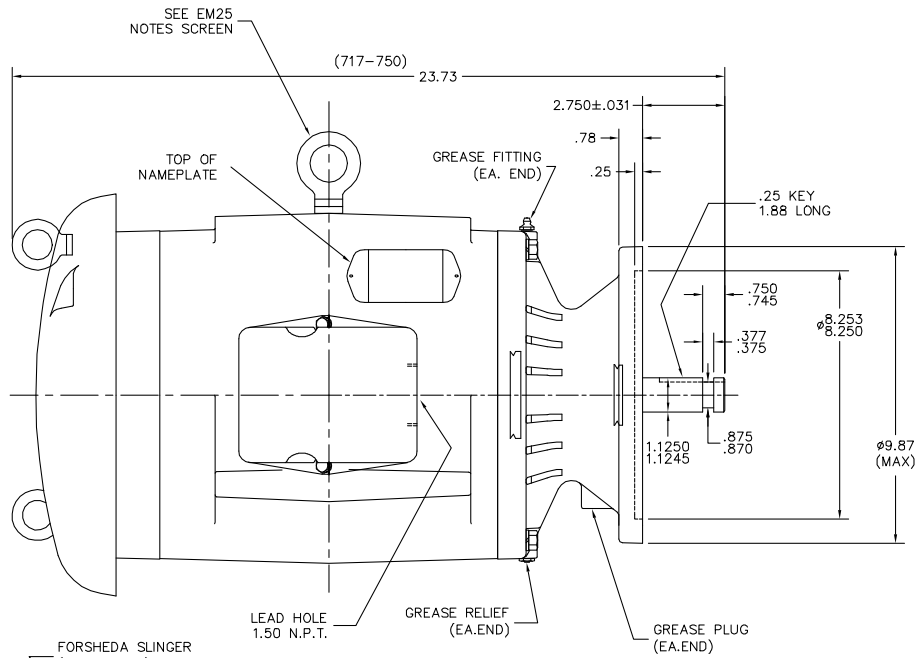
10 HP 3 PH 60 HZ 1760 RPM 460 V 0748M

TORQUES (LB-FT): PO=98.2 PU=60 LR=66.5 LRA=110

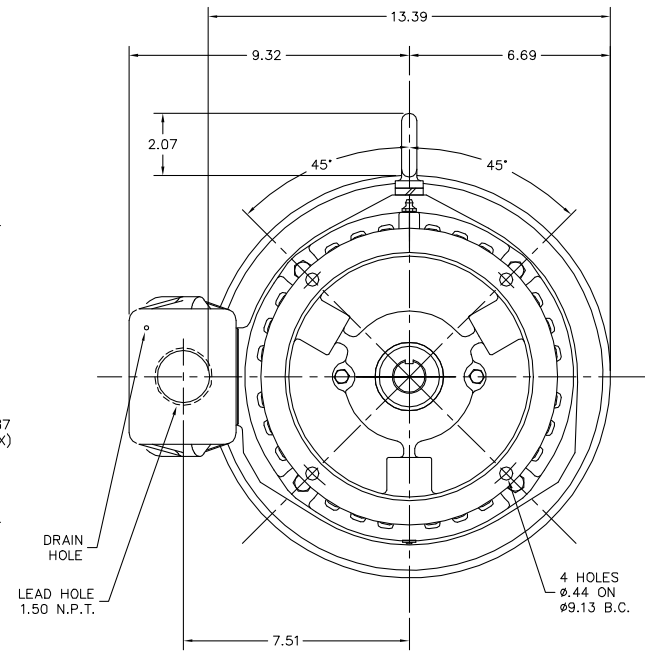


11/24/2024 ACPERF, record # 51689

07LYK218



NO LONGER AVAILABLE



07LYK218

CUSTOMER IS RESPONSIBLE FOR DETERMINING THAT THE PRODUCT WILL PERFORM SUITABLY IN THE INTENDED APPLICATION.

| | | |
|-----------------------------------|------------------------------|-------------------|
| REV. DESC: NLA, PRODUCT LIFECYCLE | | |
| REV. LTR: D | VERSION: 04 | TDR: 000001189930 |
| FILE: \AAA\00123\415 | REVISED: 03:52:23 04/26/2022 | BY: USODDIL |
| MTL: - | | |

BALDOR - RELIANCE[®]
 VERT OPEN 213-5HP WP (14-1) 309 PU BRG
 SH 1 of 1

CD0005



LOW VOLTAGE
(2Y)



LINE

HIGH VOLTAGE
(1Y)



LINE

NOTES:

1. INTERCHANGE ANY TWO LINE LEADS TO REVERSE ROTATION.
2. OPTIONAL THERMOSTATS ARE PROVIDED WHEN SPECIFIED.
3. ACTUAL NUMBER OF INTERNAL PARALLEL CIRCUITS MAY BE A MULTIPLE OF THOSE SHOWN ABOVE.
4. LEAD COLORS ARE OPTIONAL. LEADS MUST ALWAYS BE NUMBERED AS SHOWN.

CD0005

| | | | |
|---|---------|-------------------------|--------------|
| REV. DESC: REVISE TO SHOW OPTIONAL COLORS | | | |
| REV. LTR: E | BY: JLP | REVISED: 01/19/99 10:15 | TDR: 0171435 |
| S00000 | | FILE: AAA00005140 | MDL: - |
| | | MTL: - | |

BALDOR ELECTRIC Co.

3PH, DV, 9 LEADS