

**BALDOR • RELIANCE**

---

# Customer information packet

## 07K218R867G1

15HP, 3500RPM, 3PH, 60HZ, 215HP, 0744M, ODP, F1

Class - None

Division - Not Applicable

## Specifications

Enclosure	ODP
Frame	215HP
Frame Material	Iron
Frequency	60.00 Hz
Haz Area Class and Group	None
Haz Area Division	Not Applicable
Motor Letter Type	Three Phase
Output @ Frequency	15.000 HP @ 60 HZ
Phase	3
Synchronous Speed @ Frequency	3600 RPM @ 60 HZ
Voltage @ Frequency	460.0 V @ 60 HZ 230.0 V @ 60 HZ
Agency Approvals	CSA CSA EEV UR
Ambient Temperature	40 °C
Auxillary Box	No Auxillary Box
Auxillary Box Lead Termination	None
Base Indicator	No Mounting
Bearing Grease Type	Polyrex EM (-20F +300F)
Blower	None
Current @ Voltage	33.800 A @ 230.0 V 35.400 A @ 208.0 V 16.900 A @ 460.0 V
Design Code	A
Drip Cover	Drip Cover
Duty Rating	CONT
Efficiency @ 100% Load	90.2 %
Electrically Isolated Bearing	Not Electrically Isolated
Feedback Device	NO FEEDBACK
Front Face Code	Standard
Front Shaft Indicator	None

## Part detail

Revision	G
Type	AC
Mech. spec.	07K218
Base	
Status	NLA/A
Elec. spec.	07WGR867
Layout	07LYK218
Eff. date	03-02-2022
CD Diagram	CD0005
Poles	02
Leads	9#14
Proprietary	False
Created date	07-06-2015

Heater Indicator	No Heater
High Voltage Full Load Amps	16.9 a
Insulation Class	F
Inverter Code	Inverter Ready
KVA Code	K
Lifting Lugs	Vertical Lifting Lugs
Locked Bearing Indicator	Locked Bearing
Motor Lead Exit	Ko Box
Motor Lead Quantity/Wire Size	9 @ 14 AWG
Motor Lead Termination	Flying Leads
Motor Standards	NEMA
Motor Type	0744M
Mounting Arrangement	F1
Number of Poles	2
Overall Length	23.73 IN
Power Factor	91
Product Family	Weather Proof
Pulley End Bearing Type	Ball
Pulley Face Code	P-Base
Pulley Shaft Indicator	P-Base Groove & Key
Rodent Screen	None
Service Factor	1.15
Shaft Diameter	1.125 IN
Shaft Extension Location	Pulley End
Shaft Ground Indicator	No Shaft Grounding
Shaft Rotation	Reversible
Shaft Slinger Indicator	Shaft Slinger
Speed	3500 rpm
Speed Code	Single Speed
Starting Method	Direct on line
Thermal Device - Bearing	None
Thermal Device - Winding	None
Vibration Sensor Indicator	No Vibration Sensor
Winding Thermal 1	None

**Winding Thermal 2**

**None**

---

**Nameplate**

NP1267L									
<b>CAT.NO.</b>									
<b>SPEC.</b>	07K218R867G1								
<b>HP</b>	15								
<b>VOLTS</b>	230/460								
<b>AMP</b>	33.8/16.9								
<b>RPM</b>	3500								
<b>FRAME</b>	215HP	<b>HZ</b>	60	<b>PH</b>	3				
<b>SER.F.</b>	1.15	<b>CODE</b>	K	<b>DES</b>	A	<b>CL</b>	F		
<b>NEMA-NOM-EFF</b>	90.2	<b>PF</b>	91						
<b>RATING</b>	40C AMB-CONT								
<b>CC</b>	010A								
<b>DE</b>	6309	<b>ODE</b>	6206						
<b>ENCL</b>	ODP	<b>SN</b>							

## Parts list

Part number	Description	Quantity
SA303379	SA 07K218R867G1	1.000 ea
RA290502	RA 07K218R867G1	1.000 ea
HW3201A05	3/8-16 EYEBOLT	1.000 ea
09CB3002A19	CB MACH - 1.50 N.P.T. LEAD HOLE	1.000 ea
09GS1000	GASKET-CONDUIT BOX, 1/16 THICK LEXIDE	1.000 ea
10XN2520A12	1/4-20 X 3/4 HEX HEAD CAP	4.000 ea
HW1001A25	LOCKWASHER 1/4, ZINC PLT .493 OD, .255 I	4.000 ea
59XW2520G07	.25-20X.44,HEX SER WSHR,TAPTITE 2,GREEN	1.000 ea
07EP1200A01	FRONT END PLATE,MACH	1.000 ea
07AD2000	AIR DEFLECTOR, 307 OPEN P-BASE	1.000 ea
51XT0832A08	8-32 X 1/2 TY23 HXWS SLDSR	3.000 ea
HW1001A08	WASHER, #8 SPLT LK, ZN	3.000 ea
10XN3816A60	3/8-16 X 3-3/4 HEX HD CAPSCREW,GRADE 2,Z	2.000 ea
HW1001A38	LOCKWASHER 3/8, ZINC PLT .688 OD, .382 I	2.000 ea
HW4500A03	GREASE FITTING, .125 NPT 1610(ALEMITE) 8	1.000 ea
HW4500A17	317400 ALEMITE GREASE RELIEF	1.000 ea
HW5100A06	W2420-025 WVY WSHR (WB)	1.000 ea
07EP1505A02	SPL PU E.P. MACH, W/6309 BRG.	1.000 ea
HW4600B53	SEAL 1.688 X 2.275 X 0.312 SINGLE LIP DB	1.000 ea
HW4500A03	GREASE FITTING, .125 NPT 1610(ALEMITE) 8	1.000 ea
HW4500A17	317400 ALEMITE GREASE RELIEF	1.000 ea
HW4500A20	1/8NPT SL PIPE PLUG	1.000 ea
10XN2520A56	1/4-20X 3 1/2 HEX HD CAP X	2.000 ea
HW1001A25	LOCKWASHER 1/4, ZINC PLT .493 OD, .255 I	2.000 ea
HW4600B44	V-RING SLINGER 1.500 X 1.810 X .28 VITON	1.000 ea
07FH1500A01	DRIP COVER 307 OPEN P-BASE MTRS	1.000 ea
HW3201A10	.38-16 EYEBOLT W/4.50 SHANK	2.000 ea
HW1000A38	WASHER, 3/8" FLAT, SAE Z/P	2.000 ea
10XN3816A44	3/8-16 X 2 3/4 HEX HD CAP SCREW	4.000 ea
HW1001A38	LOCKWASHER 3/8, ZINC PLT .688 OD, .382 I	4.000 ea
09CB3501SP	CONDUIT BOX LID FOR 09CB3001 & 09CB3002	1.000 ea

09GS1013SP	GS FOR 09CB3501, 12CB1500 & 12CB1503 LID	1.000 ea
51XW2520A12	.25-20 X .75, TAPTITE II, HEX WSHR SLTD	2.000 ea
HW1001A25	LOCKWASHER 1/4, ZINC PLT .493 OD, .255 I	2.000 ea
HW2501E17	.250 SQUARE X 1.875 LONG LOW CARBON STEE	1.000 ea
HA7000A02	KEY RETAINER RING, 1 1/8 DIA, 1 3/8 DIA	1.000 ea
85XU0407S04	4X1/4 U DRIVE PIN STAINLESS	2.000 ea
LB1386	WARNING LABEL FOR MOTORS WITH EYENUTS	1.000 ea
MJ1000A02	GREASE, POLYREX EM EXXON	0.050 lb
MG1025G29	WILKOFAS, 789.229, DARK CHARCOAL GRAY	0.036 ga
LC0005E01	CONN.DIA./WARNING LABEL (LC0005/LB1119N)	1.000 ea
NP1267L	SS SUPER-E UL EEV CC NEMA PREM LASER ETC	1.000 ea
07PA1011	PKG GRP, 07 CAST IRON PK1181	1.000 ea
10XL3808A28	3/8 X 1 3/4" LAG SCREW	2.000 ea
MN416A01	TAG-INSTAL-MAINT no wire (2500bx)4/22	1.000 ea

**AC Induction Motor Performance Data**

Record # 57263

Typical performance - not guaranteed values

<b>Winding:</b> 07WGR867-R002		<b>Type:</b> 0744M		<b>Enclosure:</b> ODP	
<b>Nameplate Data</b>			<b>460 V, 60 Hz: High Voltage Connection</b>		
<b>Rated Output (HP)</b>	15	<b>Full Load Torque</b>	22.7 LB-FT		
<b>Volts</b>	230/460	<b>Start Configuration</b>	direct on line		
<b>Full Load Amps</b>	33.8/16.9	<b>Breakdown Torque</b>	74.9 LB-FT		
<b>R.P.M.</b>	3500	<b>Pull-up Torque</b>	55.4 LB-FT		
<b>Hz</b>	60 <b>Phase</b>	3	<b>Locked-rotor Torque</b>	87.1 LB-FT	
<b>NEMA Design Code</b>	A <b>KVA Code</b>	K	<b>Starting Current</b>	166 A	
<b>Service Factor (S.F.)</b>	1.15	<b>No-load Current</b>	5.41 A		
<b>NEMA Nom. Eff.</b>	90.2 <b>Power Factor</b>	91	<b>Line-line Res. @ 25°C</b>	0.51065 Ω	
<b>Rating - Duty</b>	40C AMB-CONT		<b>Temp. Rise @ Rated Load</b>	54°C	
<b>S.F. Amps</b>			<b>Temp. Rise @ S.F. Load</b>	68°C	
			<b>Locked-rotor Power Factor</b>	31.4	

**Load Characteristics 460 V, 60 Hz, 15 HP**

<b>% of Rated Load</b>	<b>25</b>	<b>50</b>	<b>75</b>	<b>100</b>	<b>125</b>	<b>150</b>	<b>S.F.</b>
<b>Power Factor</b>	60	80	88	91	92	93	92
<b>Efficiency</b>	89	92	92.3	91.6	90.5	89.2	90.9
<b>Speed</b>	3567.9	3541.3	3512.4	3478.2	3441.8	3406.2	3456
<b>Line amperes</b>	6.91	9.57	12.9	16.9	21.1	25.4	19.4



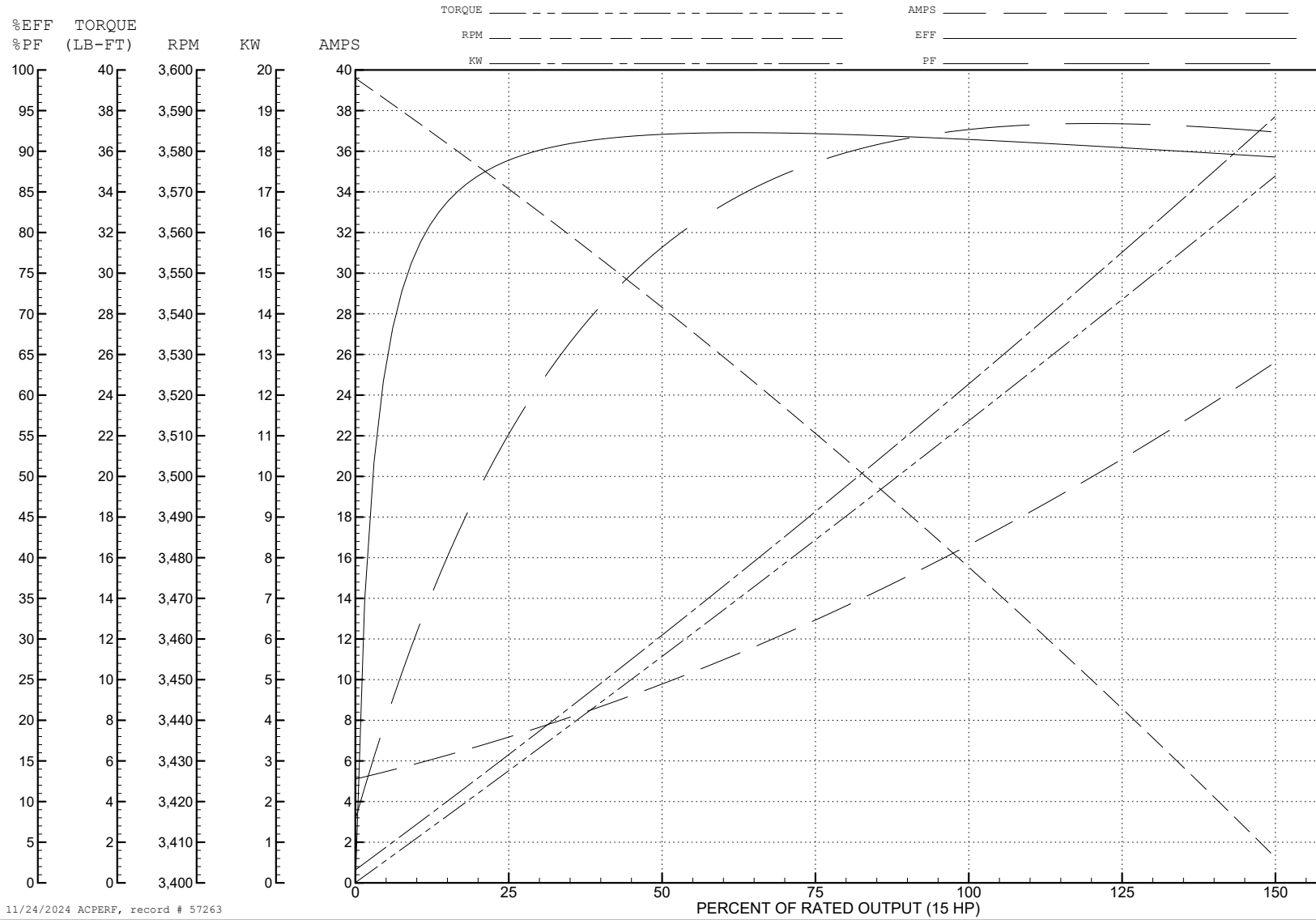
ABB Motors and Mechanical Inc.

WINDING # 07WGR867

Typical performance - not guaranteed values.

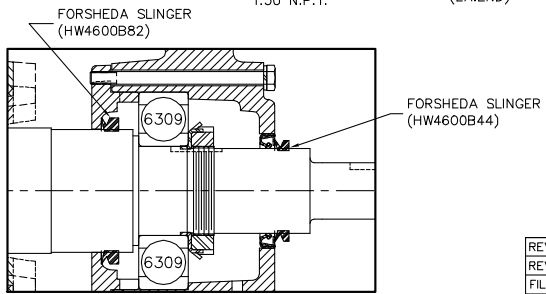
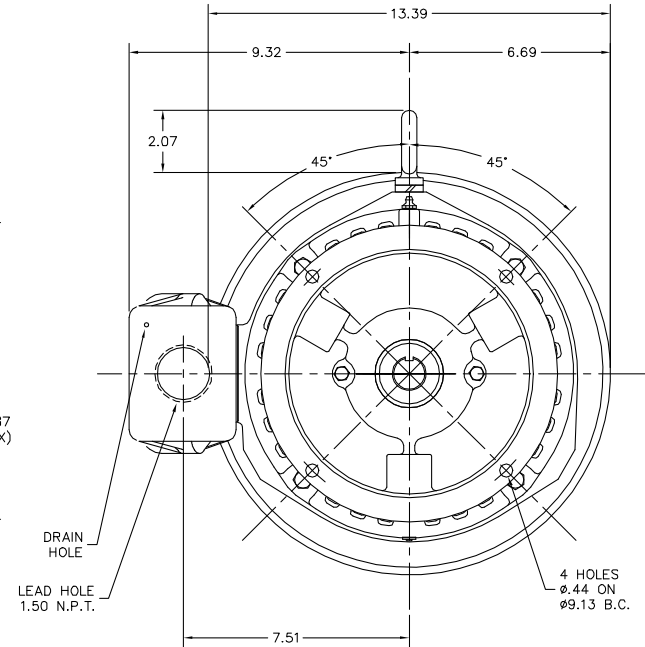
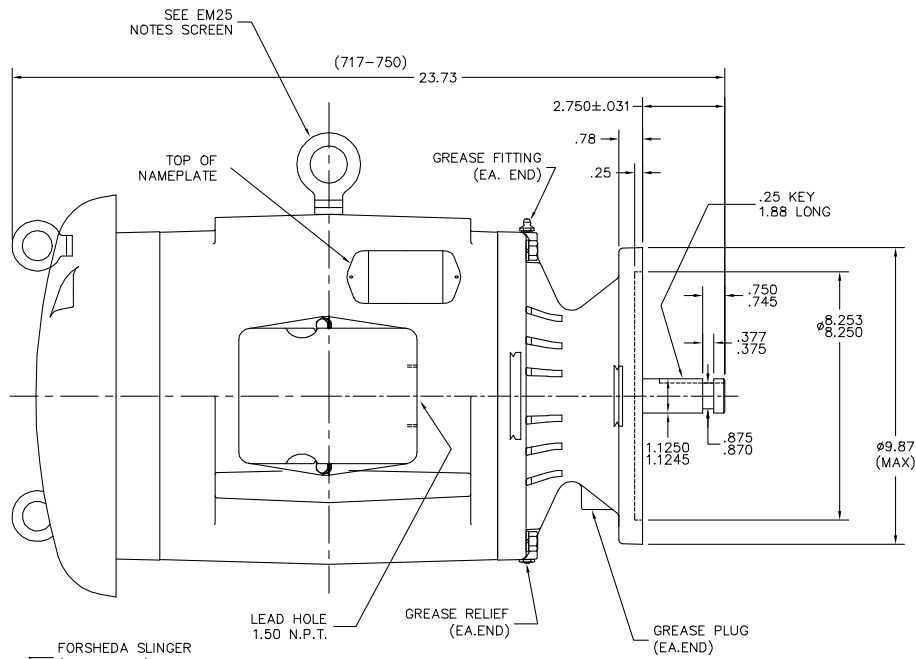
15 HP 3 PH 60 HZ 3500 RPM 460 V 0744M

TORQUES (LB-FT): PO=74.9 PU=55.4 LR=87.1 LRA=166



11/24/2024 ACPERF, record # 57263

07LYK218



NO LONGER AVAILABLE

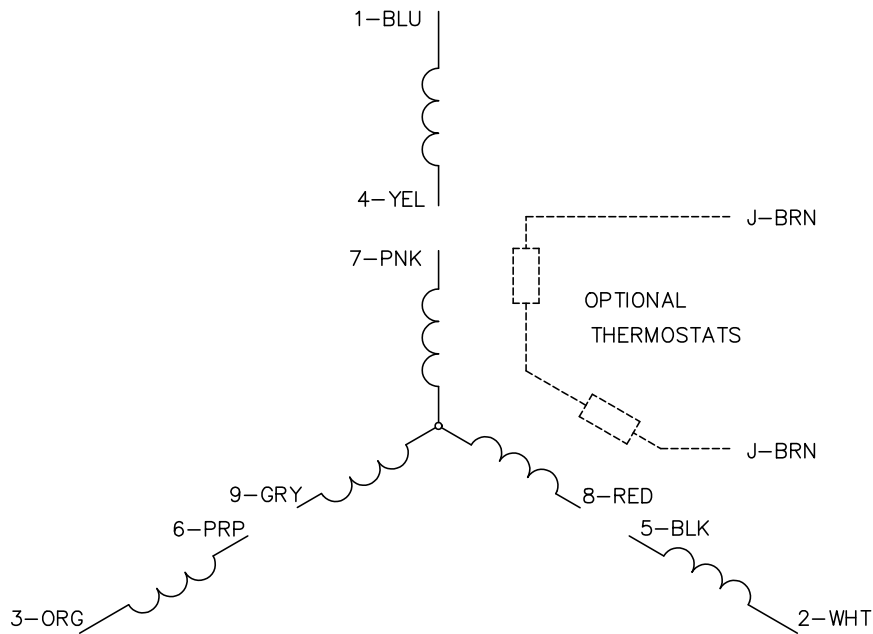
07LYK218

CUSTOMER IS RESPONSIBLE FOR DETERMINING THAT THE PRODUCT WILL PERFORM SUITABLY IN THE INTENDED APPLICATION.

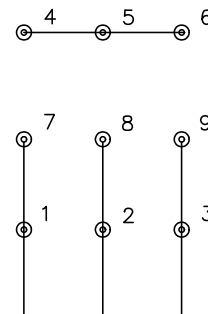
REV. DESC: NLA, PRODUCT LIFECYCLE		
REV. LTR: D	VERSION: 04	TDR: 000001189930
FILE: \AAA\00123\415	REVISED: 03:52:23 04/26/2022	BY: USODDIL
MTL: -		

**BALDOR - RELIANCE**<sup>®</sup>  
 VERT OPEN 213-5HP WP (14-1) 309 PU BRG  
 SH 1 of 1

CD0005

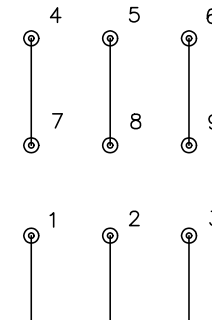


LOW VOLTAGE  
(2Y)



LINE

HIGH VOLTAGE  
(1Y)



LINE

NOTES:

1. INTERCHANGE ANY TWO LINE LEADS TO REVERSE ROTATION.
2. OPTIONAL THERMOSTATS ARE PROVIDED WHEN SPECIFIED.
3. ACTUAL NUMBER OF INTERNAL PARALLEL CIRCUITS MAY BE A MULTIPLE OF THOSE SHOWN ABOVE.
4. LEAD COLORS ARE OPTIONAL. LEADS MUST ALWAYS BE NUMBERED AS SHOWN.

REV. DESC: REVISE TO SHOW OPTIONAL COLORS			
REV. LTR: E	BY: JLP	REVISED: 01/19/99 10:15	TDR: 0171435
S00000		FILE: AAA00005140	MDL: -
		MTL: -	

**BALDOR ELECTRIC Co.**

3PH, DV, 9 LEADS

CD0005