

**BALDOR • RELIANCE**

---

# Customer information packet

## VL1322T

2HP, 1735RPM, 1PH, 60HZ, 145TC, 3538LC, OPEN, F

Class - None

Division - Not Applicable

## Specifications

Enclosure	OPEN
Frame	145TC
Frame Material	Steel
Frequency	60.00 Hz
Haz Area Class and Group	None
Haz Area Division	Not Applicable
Motor Letter Type	Cap Start, Cap Run
Output @ Frequency	2.000 HP @ 60 HZ
Phase	1
Synchronous Speed @ Frequency	1800 RPM @ 60 HZ
Voltage @ Frequency	230.0 V @ 60 HZ 208.0 V @ 60 HZ 115.0 V @ 60 HZ
Agency Approvals	CSA UR
Ambient Temperature	40 °C
Auxillary Box	No Auxillary Box
Auxillary Box Lead Termination	None
Base Indicator	No Mounting
Bearing Grease Type	Polyrex EM (-20F +300F)
Blower	None
Current @ Voltage	9.200 A @ 208.0 V 8.200 A @ 230.0 V 18.200 A @ 115.0 V
Design Code	L
Drip Cover	Drip Cover
Duty Rating	CONT
Efficiency @ 100% Load	78.5 %
Electrically Isolated Bearing	Not Electrically Isolated
Feedback Device	NO FEEDBACK
Front Shaft Indicator	None
Heater Indicator	No Heater

## Part detail

Revision	E
Type	AC
Mech. spec.	35EE018
Base	
Status	PRD/A
Elec. spec.	35WGG469
Layout	35LYEE018
Eff. date	06-19-2024
CD Diagram	CD0016A01
Poles	04
Leads	4#16 A PH,3#18 B PH Y
Proprietary	False
Created date	02-23-2023

High Voltage Full Load Amps	8.2 a
Insulation Class	F
Inverter Code	Not Inverter
KVA Code	G
Lifting Lugs	No Lifting Lugs
Locked Bearing Indicator	Locked Bearing
Motor Lead Quantity/Wire Size	4 @ 16 AWG, A PH
Motor Lead Termination	Flying Leads
Motor Standards	NEMA
Motor Type	3538LC
Mounting Arrangement	F1
Number of Poles	4
Overall Length	15.54 IN
Power Factor	98
Product Family	General Purpose
Pulley End Bearing Type	Ball
Pulley Face Code	C-Face
Pulley Shaft Indicator	Standard
Rodent Screen	None
RoHS Status	ROHS COMPLIANT
Service Factor	1.15
Shaft Diameter	0.875 IN
Shaft Ground Indicator	No Shaft Grounding
Shaft Rotation	Reversible
Shaft Slinger Indicator	No Slinger
Speed	1735 rpm
Speed Code	Single Speed
Starting Method	Direct on line
Thermal Device - Bearing	None
Thermal Device - Winding	None
Vibration Sensor Indicator	No Vibration Sensor
Winding Thermal 1	None
Winding Thermal 2	None

**Nameplate**

<b>NP1256L</b>									
<b>CAT.NO.</b>	VL1322T								
<b>SPEC.</b>	35EE018G469								
<b>HP</b>	2								
<b>VOLTS</b>	115/208-230								
<b>AMP</b>	18.2/9.2-8.2								
<b>RPM</b>	1735								
<b>FRAME</b>	145TC		<b>HZ</b>	60		<b>PH</b>	1		
<b>SER.F.</b>	1.15	<b>CODE</b>	G	<b>DES</b>	L	<b>CLASS</b>	F		
<b>NEMA-NOM-EFF</b>	78.5	<b>PF</b>	98						
<b>RATING</b>	40C AMB-CONT								
<b>CC</b>									
<b>DE</b>	6205		<b>ODE</b>	6203					
<b>ENCL</b>	OPEN	<b>SN</b>							
	SFA 20.4/11.2-10.2								

## Parts list

Part number	Description	Quantity
SA414885	SA 35EE018G469	1.000 ea
RA406654	RA 35EE018G469	1.000 ea
OC3050F09SP	CAPACITOR 50 MFD 370 VAC	1.000 ea
EC1740B06	ELEC CAP 165V 2.0 X 4.3	1.000 ea
WD3006A01	RSS-2-103JT 2W 10K RES. METAL OXIDE 5%	1.000 ea
NS2512A01	INSULATOR, CONDUIT BOX X	1.000 ea
35CB3009	35 CB W/1.09 DIA. LEAD HOLE @ 6:	1.000 ea
51XB1016A07	10-16 X 7/16 HXWSSLD SERTYB	2.000 ea
11XW1032G06	10-32 X .38, TAPTITE II, HEX WSHR SLTD U	1.000 ea
35EP3209C00	MASTER ODE,203 BRG,.683SH,GRSR@6,DRIP CV	1.000 ea
HW4500A01	1641B(ALEMITE)400 UNIV, GREASE FITT	1.000 ea
51XW0832A07	8-32 X .44, TAPTITE II, HEX WSHR SLTD SE	2.000 ea
35CB3801	CAPACITOR COVER, CAST	1.000 ea
HA7010	CAPACITOR RETENTION CLAMP	1.000 ea
NS2501A02	INSULATOR, CAPACITOR BOX	1.000 ea
51XB1016A08	10-16X 1/2HXWSSLD SERTYB	2.000 ea
HW5100A03	WAVY WASHER (W1543-017)	1.000 ea
35EP3402B00	MASTER DE,205 BRG,OPEN,W/GREASER	1.000 ea
35AD2000	AIR BAFFLE - GALVANNEAL	1.000 ea
60XW0632A06	6-32 X 3/8 TORX HEAD SCREW TAPTITE II	4.000 ea
HW4500A01	1641B(ALEMITE)400 UNIV, GREASE FITT	1.000 ea
51XN1032A20	10-32 X 1 1/4 HX WS SL SR	2.000 ea
35FN3002A05SP	EXFN, PLASTIC, 6.376 OD, .638 ID	1.000 ea
51XB1214A16	12-14X1.00 HXWSSLD SERTYB	1.000 ea
35FH4006A04	DRIP COVER SPECIAL, W/ PRIMER	1.000 ea
51XW1032A06	10-32 X .38, TAPTITE II, HEX WSHR SLTD S	3.000 ea
35CB4521	35 LIPPED CB LID (GALV & PHOSPH)	1.000 ea
51XW0832A07	8-32 X .44, TAPTITE II, HEX WSHR SLTD SE	4.000 ea
HW2501D13	KEY, 3/16 SQ X 1.375	1.000 ea
HA7000A01	KEY RETAINER 7/8" DIA SHAFT	1.000 ea
85XU0407S04	4X1/4 U DRIVE PIN STAINLESS	2.000 ea

MJ1000A02	GREASE, POLYREX EM EXXON	0.050 lb
MG1050G01	CELEROL MEDIUM CHARCOAL METALLIC GRAY	0.017 ga
HA3100A24	THRUBOLT 10-32 X 10.625	4.000 ea
WD1000A15	3-520132-2 AMP FLAG (4M/RL NON-CANC/NON-	4.000 ea
34GS5003	FOAM SLEEVE, ID = 2 1/16" X 3 3/8"	2.000 ea
SP5181A03	MODEL 35 LC TORQ STAT SWITCH LEAD ASSY	1.000 ea
LB1624	COMBINED WARNING LABEL, ISO/ANSI PICTOGR	1.000 ea
LC0016	CONNECTION LABEL	1.000 ea
NP1256L	ALUM UL CC INDUSTRIAL MOTOR A60	1.000 ea
36PA1000	PKG GRP, PRINT PK1016A06	1.000 ea
PK3082	STYROFOAM CRADLE	1.000 ea
MN416A01	TAG-INSTAL-MAINT no wire (2500bx)4/22	1.000 ea
FE-0000001	ZRTG FE ASSEMBLY	1.000 ea
PE-0000003	ZRTG PE ASSEMBLY	1.000 ea
PE-0000011	ZRTG PE ASSEMBLY	1.000 ea

**AC Induction Motor Performance Data**

Record # 104654

Typical performance - not guaranteed values

Winding: 35WGG469-R004		Type: 3538LC	Enclosure: OPEN	
<b>Nameplate Data</b>			<b>115 V, 60 Hz: Low Voltage Connection</b>	
Rated Output (HP)	2	Full Load Torque	5.98 LB-FT	
Volts	115/208-230	Start Configuration	direct on line	
Full Load Amps	18.2/9.2-8.2	Breakdown Torque	15.4 LB-FT	
R.P.M.	1735	Pull-up Torque	14.1 LB-FT	
Hz	60 Phase	Locked-rotor Torque	16.1 LB-FT	
NEMA Design Code	L KVA Code	Starting Current	126 A	
Service Factor (S.F.)	1.15	No-load Current	7.98 A	
NEMA Nom. Eff.	78.5 Power Factor	Line-line Res. @ 25°C	0.357 Ω A Ph 0.894 Ω B Ph	
Rating - Duty	40C AMB-CONT	Temp. Rise @ Rated Load	48°C	
S.F. Amps	20.4/11.2-10.2	Temp. Rise @ S.F. Load	58°C	
		Locked-rotor Power Factor	92.1	
		Rotor inertia	0.275 lb-ft <sup>2</sup>	

**Load Characteristics 115 V, 60 Hz, 2 HP**

% of Rated Load	25	50	75	100	125	150	S.F.
Power Factor	58	77	88	93	95	99	94
Efficiency	65.8	79.8	81.6	81.1	79.1	77.6	79.9
Speed	1783	1769	1754	1734	1713	1704	1721
Line amperes	8.68	10.7	13.51	18.2	21.05	22.84	19.9

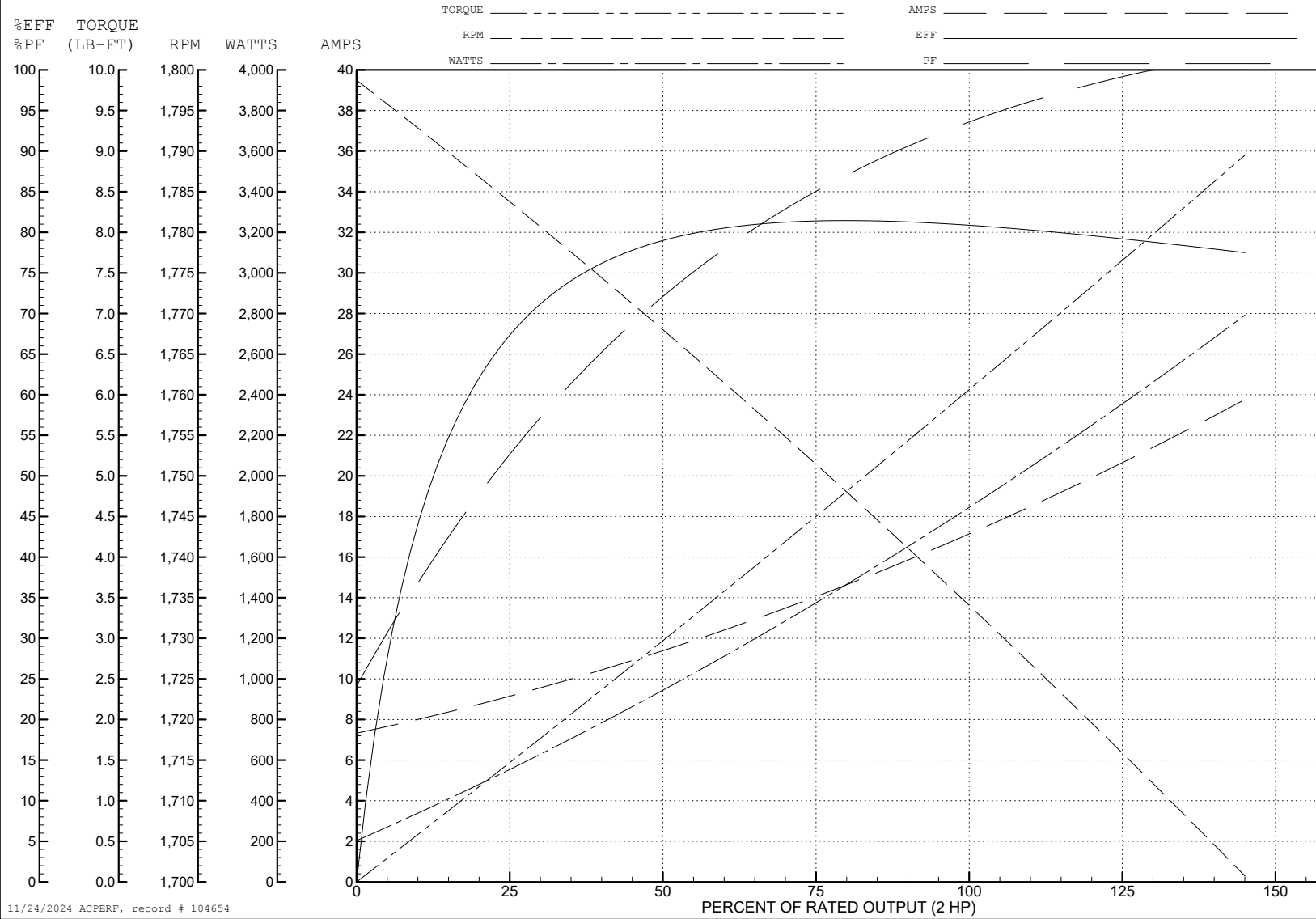
ABB Motors and Mechanical Inc.

WINDING # 35WGG469

Typical performance - not guaranteed values.

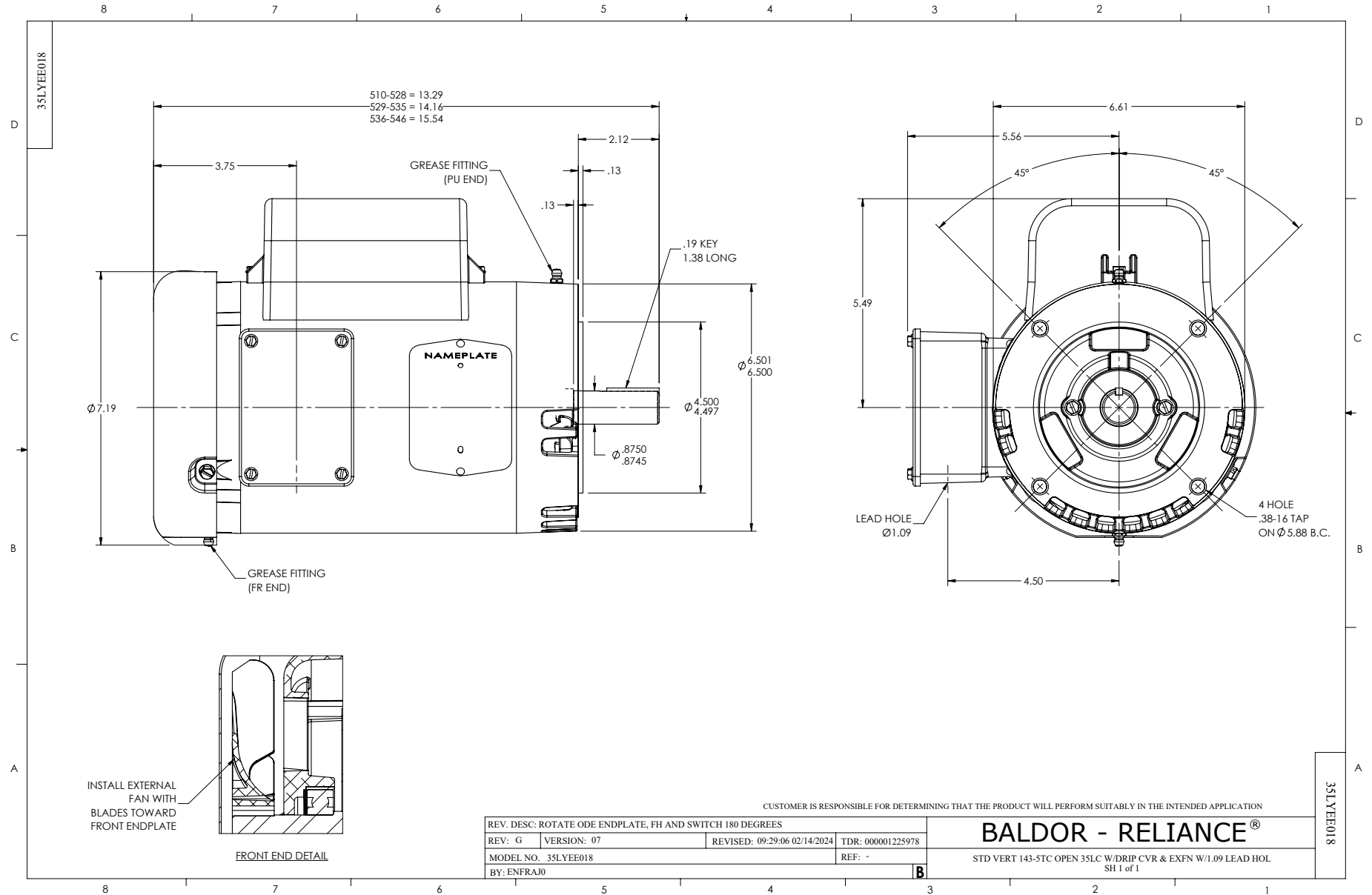
2 HP 1 PH 60 HZ 1735 RPM 115 V 3538LC

TORQUES (LB-FT): PO=15.4 PU=14.1 LR=16.1 LRA=126

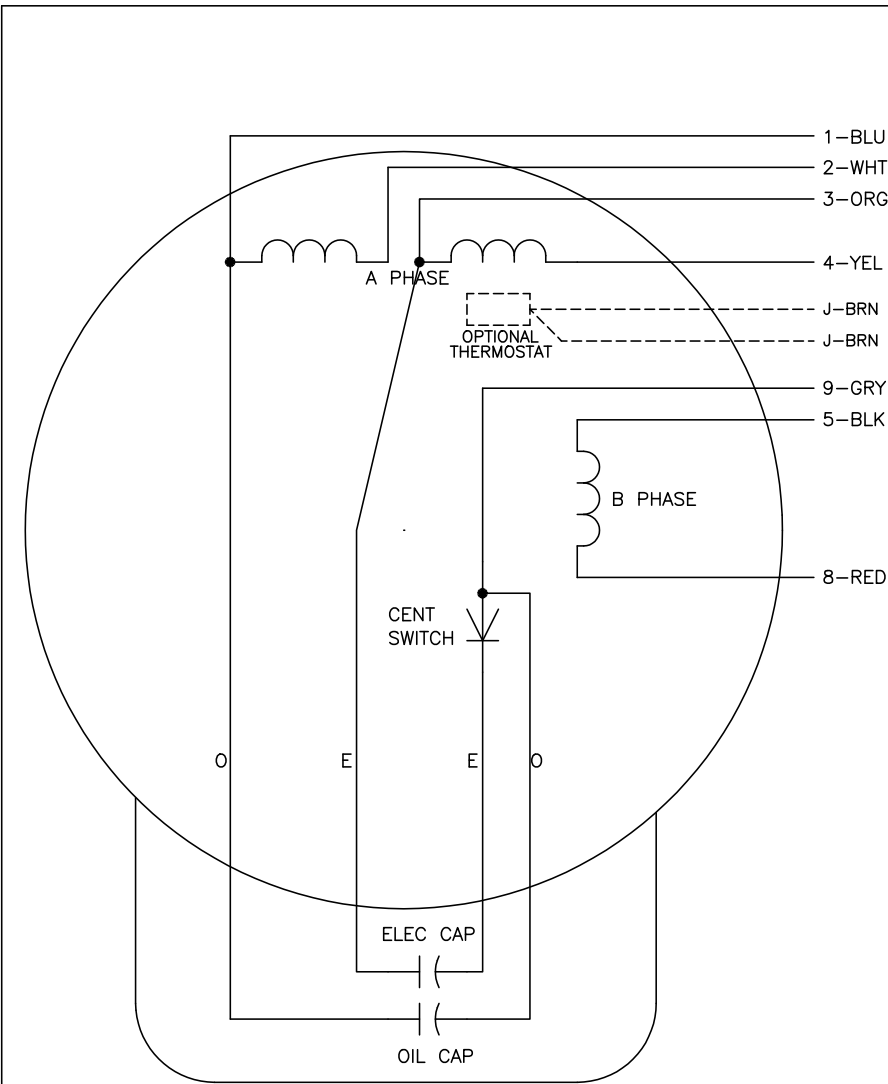


11/24/2024 ACPERF, record # 104654





CD0016A01



	LINE A	LINE B	JOIN	JOIN
HIGH STD	1	4,5	2,3	8,9
HIGH OPP	1	4,8	2,3	5,9
LOW STD	1,3	2,4,5	8,9	-
LOW OPP	1,3	2,4,8	5,9	-

NOTES:

1. STANDARD ROTATION IS CCW FACING END OPPOSITE SHAFT EXTENSION.
2. OPTIONAL THERMOSTAT IS PROVIDED WHEN SPECIFIED.
3. MULTIPLE CAPACITORS ARE CONNECTED IN PARALLEL UNLESS OTHERWISE SPECIFIED.
4. LEAD COLORS ARE OPTIONAL. LEADS MUST ALWAYS BE NUMBERED AS SHOWN.

CD0016A01

REV. DESC: REVISE TO SHOW OPTIONAL COLORS			
REV. LTR: E	BY: JLP	REVISED: 04/09/99 1:19	TDR: 0178636
10A91000		FILE: AAA00007410	MDL: -
		MTL: -	

**BALDOR ELECTRIC Co.**

TYPE LC, DV, REV, OIL CAP ACR. LINE, 7 LEADS