



Customer information packet

VLECP3665T

5HP, 1750RPM, 3PH, 60HZ, 184LP, 0641M, TEFC, F1

Class - CLI GP A,B,C,D

Division - Division II

Specifications

Enclosure	TEFC
Frame	184LP
Frame Material	Iron
Frequency	60.00 Hz
Haz Area Class and Group	CLI GP A,B,C,D
Haz Area Division	Division II
Motor Letter Type	Three Phase
Output @ Frequency	5.000 HP @ 60 HZ
Phase	3
Synchronous Speed @ Frequency	1800 RPM @ 60 HZ
Voltage @ Frequency	230.0 V @ 60 HZ 460.0 V @ 60 HZ
Agency Approvals	CCSA US CSA EEV UR
Ambient Temperature	40 °C
Auxillary Box	No Auxillary Box
Auxillary Box Lead Termination	None
Base Indicator	No Mounting
Bearing Grease Type	Polyrex EM (-20F +300F)
Blower	None
Constant Torque Speed Range	1.7
Current @ Voltage	6.600 A @ 460.0 V 14.000 A @ 208.0 V 13.200 A @ 230.0 V
Design Code	B
Drip Cover	Drip Cover
Duty Rating	CONT
Efficiency @ 100% Load	89.5 %
Electrically Isolated Bearing	Not Electrically Isolated
Feedback Device	NO FEEDBACK
Front Face Code	Standard

Part detail

Revision	M
Type	AC
Mech. spec.	06F063
Base	
Status	PRD/A
Elec. spec.	06WGX182
Layout	06LYF063
Eff. date	02-21-2022
CD Diagram	CD0005
Poles	04
Leads	9#16
Proprietary	False
Created date	07-07-2015

Front Shaft Indicator	None
Haz Area Temp Code	T3C
Heater Indicator	No Heater
High Voltage Full Load Amps	6.6 a
Insulation Class	F
Inverter Code	Not Inverter
KVA Code	J
Lifting Lugs	Vertical Lifting Lugs
Locked Bearing Indicator	Locked Bearing
Max Speed	2700 rpm
Motor Lead Exit	Ko Box
Motor Lead Quantity/Wire Size	9 @ 16 AWG
Motor Lead Termination	Flying Leads
Motor Standards	NEMA
Motor Type	0642M
Mounting Arrangement	F1
Number of Poles	4
Overall Length	22.18 IN
Power Factor	79
Product Family	Super-E Chemical Processing
Pulley End Bearing Type	Thrust
Pulley Face Code	P-Base
Pulley Shaft Indicator	P-Base Groove & Key
Rodent Screen	None
RoHS Status	ROHS COMPLIANT
Service Factor	1.15
Shaft Diameter	1.125 IN
Shaft Extension Location	Pulley End
Shaft Ground Indicator	No Shaft Grounding
Shaft Rotation	Reversible
Shaft Slinger Indicator	No Slinger
Speed	1750 rpm
Speed Code	Single Speed
Starting Method	Direct on line

Thermal Device - Bearing	None
Thermal Device - Winding	None
Vibration Sensor Indicator	No Vibration Sensor
Winding Thermal 1	None
Winding Thermal 2	None

Nameplate

NP3258									
CAT.NO.	VLECP3665T								
SPEC.	06F063X182G2								
HP	5 TE								
VOLTS	230/460								
AMP	13.2/6.6								
RPM	1750								
FRAME	184LP	HZ	60	PH	3				
SER.F.	1.15	CODE	J	DES	B	CL	F		
RATING	40C AMB-CONT								
SN									
DE	QJ307	ODE	6206						
NEMA-NOM-EFF	89.5	PF	80						
G.MIN.EFF	87.5	CC	010A						
T. CODE	T3C	T=	160						

NP3261			
SPEC.	06F063X182G2		
D.E. BRG.	35BZ03X00X		
O.D.E. BRG.	30BC02X30X		
GREASE	POLYREX EM		
RPM MAX	2700	MAX. KVAR	1.1
BLANK	SFA 14.6/7.3		
INV.TYPE	PWM		
T=	160		
C HP FR	60	C HP TO	90
CT HZ FROM	1.7	CT HZ TO	60
VT HZ FROM	-0	VT HZ TO	60
HTR-VOLTS	N/A	HTR-AMPS	N/A
HTR-WATTS	N/A	MAX. SPACE HEATER TEMP.	N/A

Parts list

Part number	Description	Quantity
SA303666	SA 06F063X182G2	1.000 ea
RA290801	RA 06F063X182G2	1.000 ea
36FN3000C01SP	EXFN, PLASTIC, 5.25 OD, .912 ID	1.000 ea
06CB1001A85G	06CB W/1.00 NPT @6,.25-20 GRD,#26 DRAIN	1.000 ea
RM1016	LEAD SEPARATOR GASKET - 305/306 C.P.MOTO	1.000 ea
51XF2520A16	SCREW,HEX SER SLT HD,ZN 1/4-20X1.00LG TD	2.000 ea
WD1000B16	T&B CX70TN OR L70P TERMINAL LUG	2.000 ea
10XN2520G06	1/4 20X3/8 HX HD CAP, GREEN	2.000 ea
HW1001S25	WASHER, 1/4 SPLT LK, STAINLESS STEEL	1.000 ea
HW4600B36SP	V-RING SLINGER 1.188 X 1.690 X .24 VITON	1.000 ea
06FH1004A03G	FAN HOUSING MACH, W/GREASER AND DRIP CVR	1.000 ea
36EP1100A25G	FREP ENCL. 206 BRG.,GRSR,REL,#26 DRAIN(G	1.000 ea
HW4500A32	FIT./EXT 1698-B (ALEMITE)GREASE FITTING	1.000 ea
HW4500A17	317400 ALEMITE GREASE RELIEF	1.000 ea
HW5100A06	W2420-025 WVY WSHR (WB)	1.000 ea
36EP1505A02G	SPL PU E.P. - ENCL.- 307 BRG - NEMA 182L	1.000 ea
HW4500A01	1641B(ALEMITE)400 UNIV, GREASE FITT	1.000 ea
HW4500A17	317400 ALEMITE GREASE RELIEF	1.000 ea
12XN1032S22	10-32 X 1 3/8 SLOT HEX, STAINLESS STEEL	2.000 ea
10XN2520S48	1/4-20 X 3 HEX HEAD SS	2.000 ea
HA3101S46	THRUBOLT 1/4-20 X 10.00	4.000 ea
51XB1214A16	12-14X1.00 HXWSSLD SERTYB	1.000 ea
10XN2520S26	1/4-20X 1 5/8 HEX HD SS	3.000 ea
HW1001S25	WASHER, 1/4 SPLT LK, STAINLESS STEEL	3.000 ea
39FH4500A03G	DRIP COVER, STAMPED (GRAY EPOXY)	1.000 ea
XY3816S12	3/8-16 HEX FINISHED NUT SS	2.000 ea
HW1001S38	WASHER, 3/8 SPLT LK, STAINLESS STEEL	2.000 ea
06CB1503A01G	LIPPED CONDUIT BOX LID, MACH GRAY EPOXY	1.000 ea
06GS1009	GASKET, KOBX LID, 1/8" THICK BLACK NEOPR	1.000 ea
HA3400S09	STUD-3/8-16 X 2.75	4.000 ea
HW1001S38	WASHER, 3/8 SPLT LK, STAINLESS STEEL	4.000 ea

HW3208S01	3/8-16 EYE NUT	2.000 ea
HW1001S38	WASHER, 3/8 SPLT LK, STAINLESS STEEL	2.000 ea
10XN2520S12	BOLT 1/4 - 20X 3/4 HEX HEAD SS (F/S)	2.000 ea
HW1001S25	WASHER, 1/4 SPLT LK, STAINLESS STEEL	2.000 ea
HW4600B33	V-RING SLINGER 1.375 X 1.890 X .35 VITON	1.000 ea
HW2502E16	#303 SS,SQ KEY 1/4 X 1.750	1.000 ea
HA7000A02	KEY RETAINER RING, 1 1/8 DIA, 1 3/8 DIA	1.000 ea
MJ5001A27	32220KN GRAY SEALER *MIN BUY 4 QTS=1GAL	0.001 qt
LB1624	COMBINED WARNING LABEL, ISO/ANSI PICTOGR	1.000 ea
85XU0407S04	4X1/4 U DRIVE PIN STAINLESS	4.000 ea
MJ1000A02	GREASE, POLYREX EM EXXON	0.050 lb
MG1025N19	WILKOFASST, 778.50, RELIANCE BLUE-GREEN 8	0.028 ga
LC0005	CONN.DIA.,TY M,9-LD,DUAL VOLT,REVERSING	1.000 ea
LB1449	DIV-2/NEC WARNING LABEL	1.000 ea
NP3258	SS CP SUPER-E DIV-2 UL CSA-C US EEV CC	1.000 ea
NP3261	SS CP SUPER-E AUX DATA INFORMATION	1.000 ea
GOPA1000	PKG GRP, PRINT PK1026A06	1.000 ea
PK3082	STYROFOAM CRADLE	1.000 ea
PK6503	STRUCTURAL WOOD PSC 1X6X8	1.000 ea
MN416A01	TAG-INSTAL-MAINT no wire (2500bx)4/22	1.000 ea
LB1002N	LABEL,MARINE DUTY (ON ROLLS)	1.000 ea

AC Induction Motor Performance Data

Record # 34381

Typical performance - not guaranteed values

Winding: 06WGX182-R004		Type: 0642M		Enclosure: TEFC	
Nameplate Data			460 V, 60 Hz: High Voltage Connection		
Rated Output (HP)	5	Full Load Torque	15 LB-FT		
Volts	230/460	Start Configuration	direct on line		
Full Load Amps	13.2/6	Breakdown Torque	53.9 LB-FT		
R.P.M.	1750	Pull-up Torque	22.4 LB-FT		
Hz	60	Locked-rotor Torque	31.8 LB-FT		
NEMA Design Code	B	Starting Current	46.6 A		
Service Factor (S.F.)	1.15	No-load Current	3.02 A		
NEMA Nom. Eff.	89.5	Line-line Res. @ 25°C	2.63 Ω		
Rating - Duty	40C AMB-CONT	Temp. Rise @ Rated Load	53°C		
S.F. Amps		Temp. Rise @ S.F. Load	65°C		
		Locked-rotor Power Factor	40.5		
		Rotor inertia	0.391 LB-FT ²		

Load Characteristics 460 V, 60 Hz, 5 HP

% of Rated Load	25	50	75	100	125	150	S.F.
Power Factor	41	63	75	81	84	85	81
Efficiency	85.2	89.8	90.4	89.8	88.4	86.9	88.7
Speed	1789	1777	1765	1752	1737	1721	1739
Line amperes	3.35	4.14	5.21	6.45	7.91	9.47	7.52

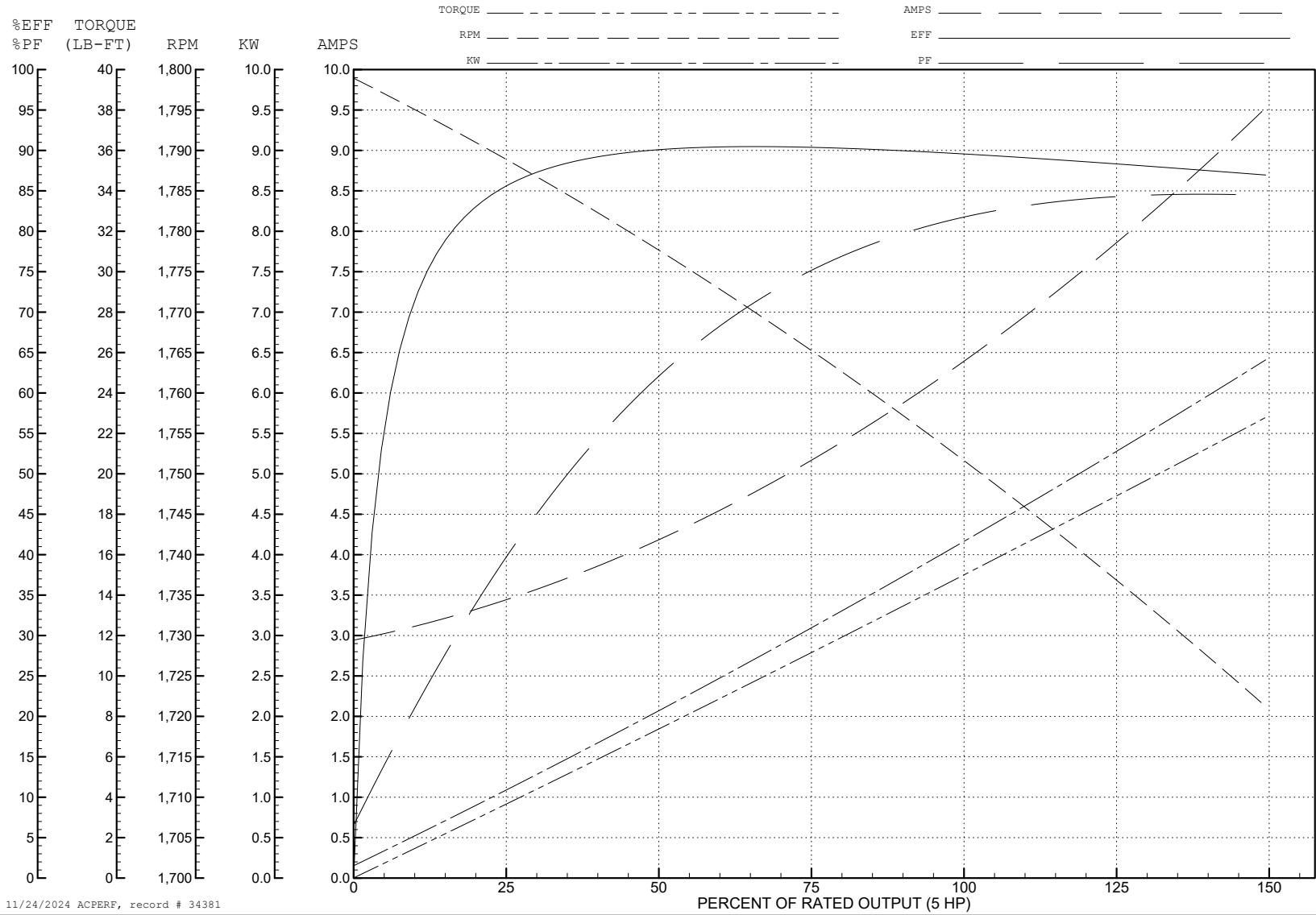
ABB Motors and Mechanical Inc.

WINDING # 06WGX182

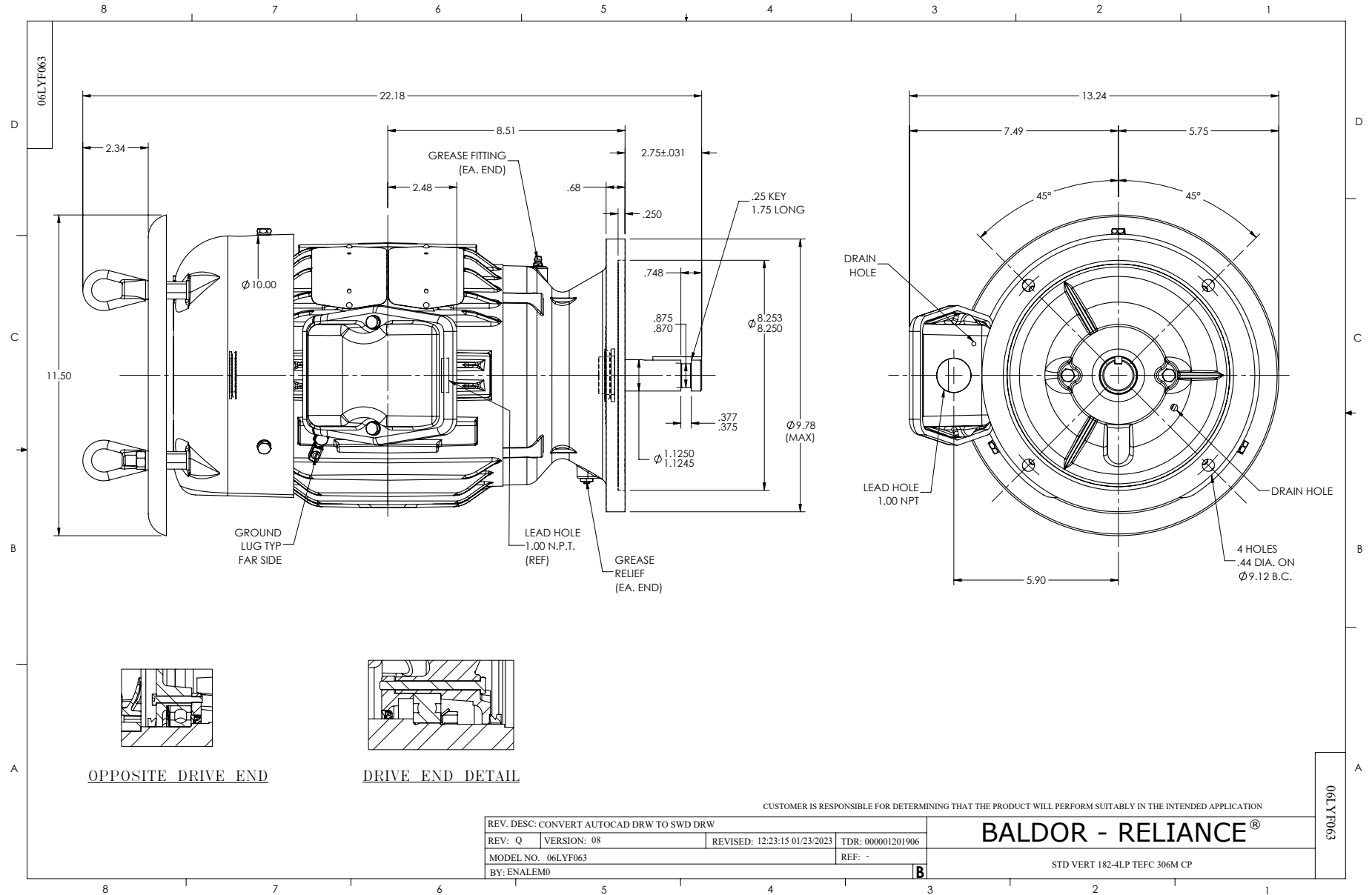
5 HP 3 PH 60 HZ 1750 RPM 460 V 0642M

Typical performance - not guaranteed values.

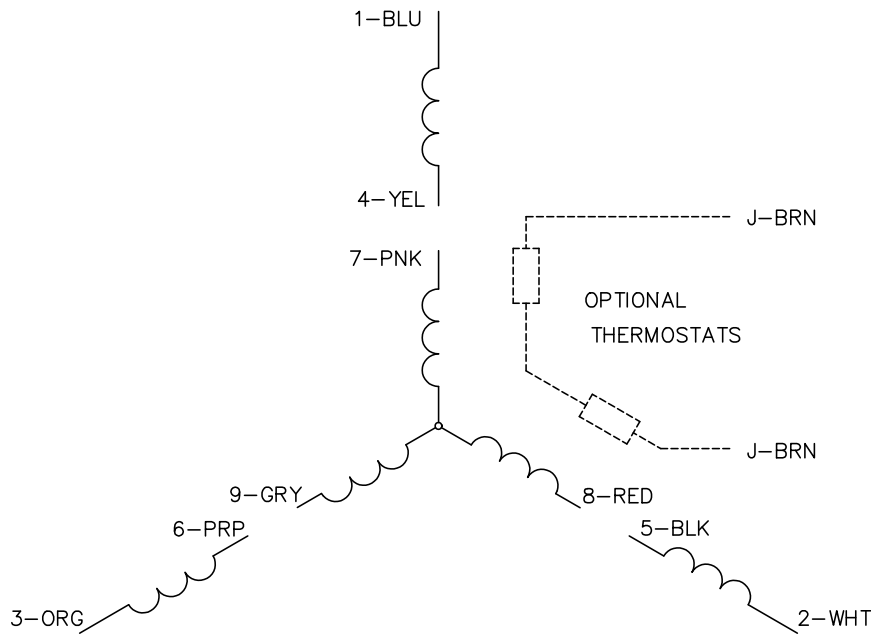
TORQUES (LB-FT): PO=53.9 PU=22.4 LR=31.8 LRA=46.6



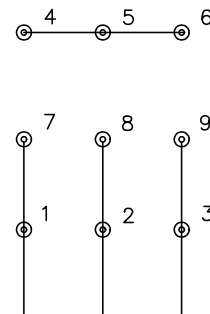
11/24/2024 ACPERF, record # 34381



CD0005

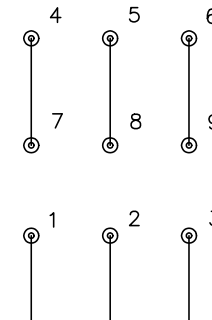


LOW VOLTAGE
(2Y)



LINE

HIGH VOLTAGE
(1Y)



LINE

NOTES:

1. INTERCHANGE ANY TWO LINE LEADS TO REVERSE ROTATION.
2. OPTIONAL THERMOSTATS ARE PROVIDED WHEN SPECIFIED.
3. ACTUAL NUMBER OF INTERNAL PARALLEL CIRCUITS MAY BE A MULTIPLE OF THOSE SHOWN ABOVE.
4. LEAD COLORS ARE OPTIONAL. LEADS MUST ALWAYS BE NUMBERED AS SHOWN.

CD0005

REV. DESC: REVISE TO SHOW OPTIONAL COLORS			
REV. LTR: E	BY: JLP	REVISED: 01/19/99 10:15	TDR: 0171435
S00000		FILE: AAA00005140	MDL: -
		MTL: -	

BALDOR ELECTRIC Co.

3PH, DV, 9 LEADS