



---

# Customer information packet

## VLECP3769T

7.5HP, 3510RPM, 3PH, 60HZ, 213LP, 0732M, TEFC

Class - CLI GP A,B,C,D

Division - Division II

## Specifications

Enclosure	TEFC
Frame	213LP
Frame Material	Iron
Frequency	60.00 Hz
Haz Area Class and Group	CL I GP A,B,C,D
Haz Area Division	Division II
Motor Letter Type	Three Phase
Output @ Frequency	7.500 HP @ 60 HZ
Phase	3
Synchronous Speed @ Frequency	3600 RPM @ 60 HZ
Voltage @ Frequency	230.0 V @ 60 HZ 460.0 V @ 60 HZ
Agency Approvals	UR CCSA US CSA EEV
Ambient Temperature	40 °C
Auxillary Box	No Auxillary Box
Auxillary Box Lead Termination	None
Base Indicator	No Mounting
Bearing Grease Type	Polyrex EM (-20F +300F)
Blower	None
Constant Torque Speed Range	6
Current @ Voltage	8.600 A @ 460.0 V 17.200 A @ 230.0 V
Design Code	B
Drip Cover	Drip Cover
Duty Rating	CONT
Efficiency @ 100% Load	91.0 %
Electrically Isolated Bearing	Not Electrically Isolated
Feedback Device	NO FEEDBACK
Front Face Code	Drip Cover Mounting
Front Shaft Indicator	None

## Part detail

Revision	M
Type	AC
Mech. spec.	07H347
Base	
Status	PRD/A
Elec. spec.	07WGY010
Layout	07LYH347
Eff. date	09-22-2022
CD Diagram	CD0005
Poles	02
Leads	9#14
Proprietary	False
Created date	07-07-2015

<b>Haz Area Temp Code</b>	T3C
<b>Heater Indicator</b>	No Heater
<b>High Voltage Full Load Amps</b>	8.6 a
<b>Insulation Class</b>	F
<b>Inverter Code</b>	Inverter Ready
<b>KVA Code</b>	H
<b>Lifting Lugs</b>	Vertical Lifting Lugs
<b>Locked Bearing Indicator</b>	Locked Bearing
<b>Max Speed</b>	5400 rpm
<b>Motor Lead Exit</b>	Ko Box
<b>Motor Lead Quantity/Wire Size</b>	9 @ 14 AWG
<b>Motor Lead Termination</b>	Flying Leads
<b>Motor Standards</b>	NEMA
<b>Motor Type</b>	0732M
<b>Mounting Arrangement</b>	F1
<b>Number of Poles</b>	2
<b>Overall Length</b>	22.51 IN
<b>Power Factor</b>	88
<b>Product Family</b>	Super-E Chemical Processing
<b>Pulley End Bearing Type</b>	Thrust
<b>Pulley Face Code</b>	P-Base
<b>Pulley Shaft Indicator</b>	P-Base Groove & Key
<b>Rodent Screen</b>	None
<b>RoHS Status</b>	ROHS COMPLIANT
<b>Service Factor</b>	1.15
<b>Shaft Extension Location</b>	Pulley End
<b>Shaft Ground Indicator</b>	No Shaft Grounding
<b>Shaft Rotation</b>	Reversible
<b>Shaft Slinger Indicator</b>	No Slinger
<b>Speed</b>	3510 rpm
<b>Speed Code</b>	Single Speed
<b>Starting Method</b>	Direct on line
<b>Thermal Device - Bearing</b>	None
<b>Thermal Device - Winding</b>	None

<b>Vibration Sensor Indicator</b>	<b>No Vibration Sensor</b>
<b>Winding Thermal 1</b>	<b>None</b>
<b>Winding Thermal 2</b>	<b>None</b>

**Nameplate**

<b>NP3258</b>									
<b>CAT.NO.</b>	VLECP3769T								
<b>SPEC.</b>	07H347Y010G1								
<b>HP</b>	7.5 TE								
<b>VOLTS</b>	230/460								
<b>AMP</b>	17.2/8.6								
<b>RPM</b>	3510								
<b>FRAME</b>	213LP	<b>HZ</b>	60	<b>PH</b>	3				
<b>SER.F.</b>	1.15	<b>CODE</b>	H	<b>DES</b>	B	<b>CL</b>	F		
<b>RATING</b>	40C AMB-CONT								
<b>SN</b>									
<b>DE</b>	QJ211	<b>ODE</b>	6307						
<b>NEMA-NOM-EFF</b>	91	<b>PF</b>	88						
<b>G.MIN.EFF</b>	89.5	<b>CC</b>	010A						
<b>T. CODE</b>	T3C	<b>T=</b>	160						

<b>NP3261</b>			
<b>SPEC.</b>	07H347Y010G1		
<b>D.E. BRG.</b>	55BZ02X00X		
<b>O.D.E. BRG.</b>	35BC03X30X		
<b>GREASE</b>	POLYREX EM		
<b>RPM MAX</b>	5400	<b>MAX. KVAR</b>	
<b>BLANK</b>			
<b>INV.TYPE</b>	PWM		
<b>T=</b>	160		
<b>C HP FR</b>	60	<b>C HP TO</b>	90
<b>CT HZ FROM</b>	6	<b>CT HZ TO</b>	60
<b>VT HZ FROM</b>	3	<b>VT HZ TO</b>	60
<b>HTR-VOLTS</b>	N/A	<b>HTR-AMPS</b>	N/A
<b>HTR-WATTS</b>	N/A	<b>MAX. SPACE HEATER TEMP.</b>	N/A

## Parts list

Part number	Description	Quantity
SA303668	SA 07H347Y010G1	1.000 ea
RA290803	RA 07H347Y010G1	1.000 ea
36FN3000C02SP	EXFN, PLASTIC, 5.25 OD, 1.175 ID	1.000 ea
HA6481	S.S. LIFTING EYE BRACKET FOR 306 & 307 F	2.000 ea
10XN3816S16	3/8-16 X 1 HEX HD CAP SCREW, STAINLE	4.000 ea
HW1001S38	WASHER, 3/8 SPLT LK, STAINLESS STEEL	4.000 ea
10XN2520S06	1/4 20X3/8 HX HD CAP S.S.	2.000 ea
HW1001S25	WASHER, 1/4 SPLT LK, STAINLESS STEEL	2.000 ea
HA3104S13	THRUBOLT- .31-18X11.75 SSTDR#59495	4.000 ea
WD1000B16	T&B CX70TN OR L70P TERMINAL LUG	1.000 ea
09CB1002A08G	CB 309 W/1.50 NPT LEAD HOLE (GRAY EPOXY)	1.000 ea
RM1017	LEAD SEPERATOR GASKET MODEL 307 1/8" THK	1.000 ea
19XW2520A16	SCREW,1/4-20X1 TAPTITE-II OR ROLOC 91	4.000 ea
10XN2520S06	1/4 20X3/8 HX HD CAP S.S.	1.000 ea
HW1001S25	WASHER, 1/4 SPLT LK, STAINLESS STEEL	1.000 ea
WD1000B16	T&B CX70TN OR L70P TERMINAL LUG	1.000 ea
37EP1101A48G	FR EP, MACH, 307 BRG FOR CI FAN COVER W/	1.000 ea
HW4500A31	GREASE FIT/EXT 3014-B .25-28 ALEMITE	1.000 ea
HW4500A17	317400 ALEMITE GREASE RELIEF	1.000 ea
HW5100A08	W3118-035 WVY WSHR (WB)	1.000 ea
37EP1504A02G	SPL PU E.P. MACH, W/GRAY EPOXY QJ211 BRG	1.000 ea
HW4500A01	1641B(ALEMITE)400 UNIV, GREASE FITT	1.000 ea
HW4500A17	317400 ALEMITE GREASE RELIEF	1.000 ea
10XN2520S28	1/4-20X 1 3/4 HEX HD SS X	4.000 ea
HW1001S25	WASHER, 1/4 SPLT LK, STAINLESS STEEL	4.000 ea
10XN2520S52	1/4-20X 3 1/4 HEX HD SS X	2.000 ea
HW1001S25	WASHER, 1/4 SPLT LK, STAINLESS STEEL	2.000 ea
51XB1214A20	12-14X1.25 HXWSSLD SERTYB	1.000 ea
07FH1001A06G	307 FH FOR MTG TO FR E.P. W/GREASER & DR	1.000 ea
10XN2520S28	1/4-20X 1 3/4 HEX HD SS X	3.000 ea
HW1001S25	WASHER, 1/4 SPLT LK, STAINLESS STEEL	3.000 ea

40FH2500A04G	P'L DRIP COVER MODEL 40- OPEN MACH, GRA	1.000 ea
HA2086A03	.375 X 1.0 HVY-FT SPACER SPIRAL # 62434	4.000 ea
10XN3816S32	3/8-16 X 2 HEX HD CAP SCREW, STAINLE	4.000 ea
HW1001S38	WASHER, 3/8 SPLT LK, STAINLESS STEEL	4.000 ea
HW4600B33	V-RING SLINGER 1.375 X 1.890 X .35 VITON	1.000 ea
HW4600B40	V-RING SLINGER 2.000 X 2.680 X .28 VITON	1.000 ea
12CB1503G	CONDUIT BOX CAST. (GRAY)	1.000 ea
12GS1002	GASKET, CONDUIT BOX LID, NEOP	1.000 ea
10XN2520S12	BOLT 1/4 - 20X 3/4 HEX HEAD SS (F/S)	2.000 ea
HW1001S25	WASHER, 1/4 SPLT LK, STAINLESS STEEL	2.000 ea
MJ5001A27	32220KN GRAY SEALER *MIN BUY 4 QTS=1GAL	0.001 qt
MJ5001A14	DYNAPRO SEALANT, CP MTR VC#2508050 (603	0.001 ea
85XU0407S04	4X1/4 U DRIVE PIN STAINLESS	4.000 ea
LB1624	COMBINED WARNING LABEL, ISO/ANSI PICTOGR	1.000 ea
LB1002N	LABEL, MARINE DUTY (ON ROLLS)	1.000 ea
MJ1000A02	GREASE, POLYREX EM EXXON	0.050 lb
MG1025N19	WILKOFAS, 778.50, RELIANCE BLUE-GREEN 8	0.036 ga
LC0005	CONN.DIA., TY M, 9-LD, DUAL VOLT, REVERSING	1.000 ea
LB1449	DIV-2/NEC WARNING LABEL	1.000 ea
NP3258	SS CP SUPER-E DIV-2 UL CSA-C US EEV CC	1.000 ea
NP3261	SS CP SUPER-E AUX DATA INFORMATION	1.000 ea
07PA1097	PKG GRP, 07 CAST IRON 2X4 RISERS PK1181	1.000 ea
07PA1095	PKG GRP, VER 07 CAST IRON	1.000 ea
MN416A01	TAG-INSTAL-MAINT no wire (2500bx)4/22	1.000 ea



**AC Induction Motor Performance Data**

Record # 47061

Typical performance - not guaranteed values

Winding: 07WGY010-R020		Type: 0732M		Enclosure: TEFC		
<b>Nameplate Data</b>			<b>460 V, 60 Hz: High Voltage Connection</b>			
Rated Output (HP)	7.5		Full Load Torque	11.1 LB-FT		
Volts	230/460		Start Configuration	direct on line		
Full Load Amps	17.2/8.6		Breakdown Torque	45.1 LB-FT		
R.P.M.	3510		Pull-up Torque	15 LB-FT		
Hz	60	Phase	3	Locked-rotor Torque	21.3 LB-FT	
NEMA Design Code	B		KVA Code	H	Starting Current	61.4 A
Service Factor (S.F.)	1.15		No-load Current	2.75 A		
NEMA Nom. Eff.	91	Power Factor	88	Line-line Res. @ 25°C	1.14 Ω	
Rating - Duty	40C AMB-CONT		Temp. Rise @ Rated Load	41°C		
S.F. Amps			Temp. Rise @ S.F. Load	50°C		
			Locked-rotor Power Factor	31.7		
			Rotor inertia	0.292 LB-FT <sup>2</sup>		

**Load Characteristics 460 V, 60 Hz, 7.5 HP**

% of Rated Load	25	50	75	100	125	150	S.F.
Power Factor	57	78	85	89	89	90	89
Efficiency	86.8	91.2	92.2	91.8	90.9	89.8	91.3
Speed	3579	3558	3536	3510	3484	3454	3494
Line amperes	3.42	4.86	6.63	8.52	10.7	13	9.84

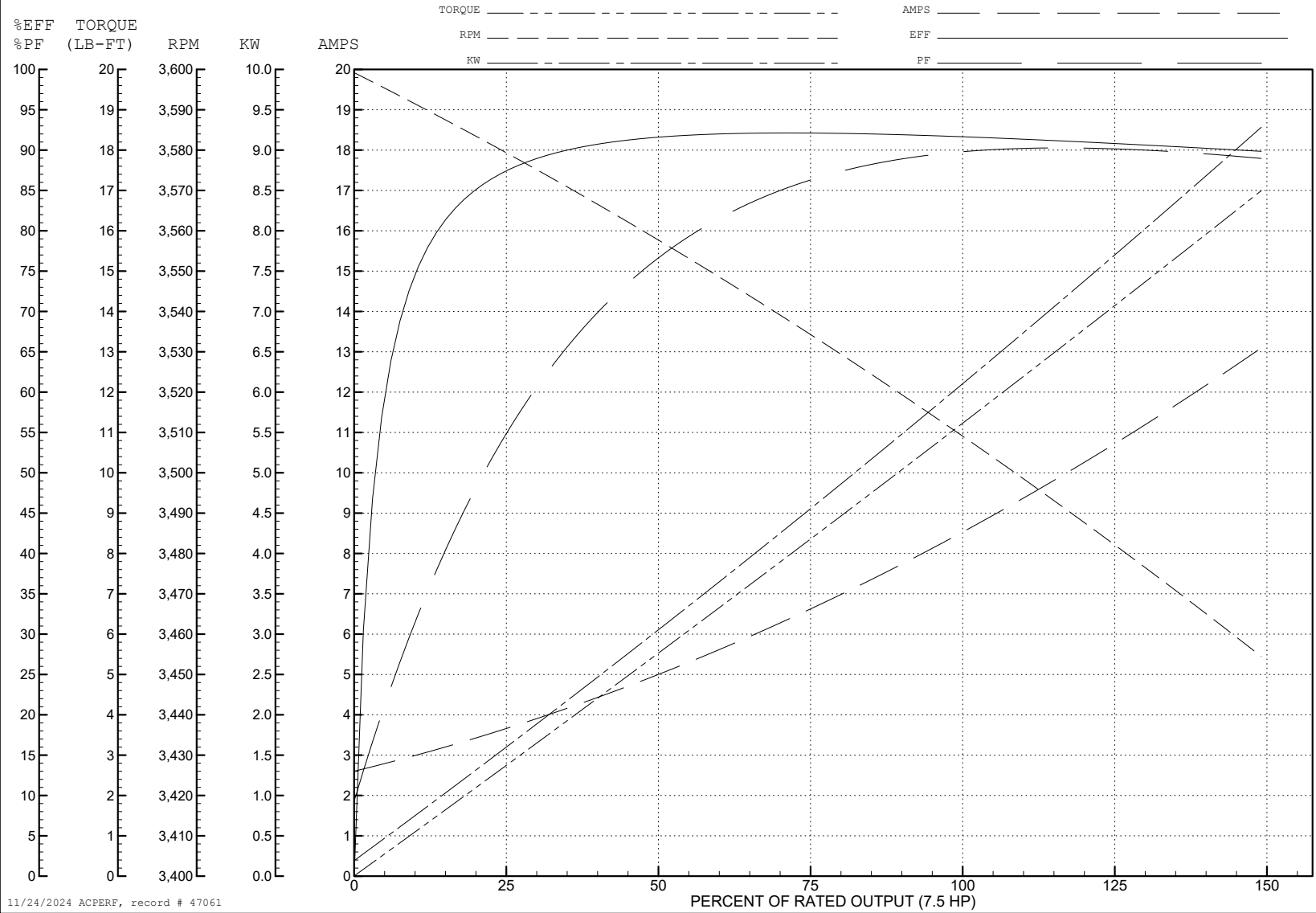
ABB Motors and Mechanical Inc.

WINDING # 07WGY010

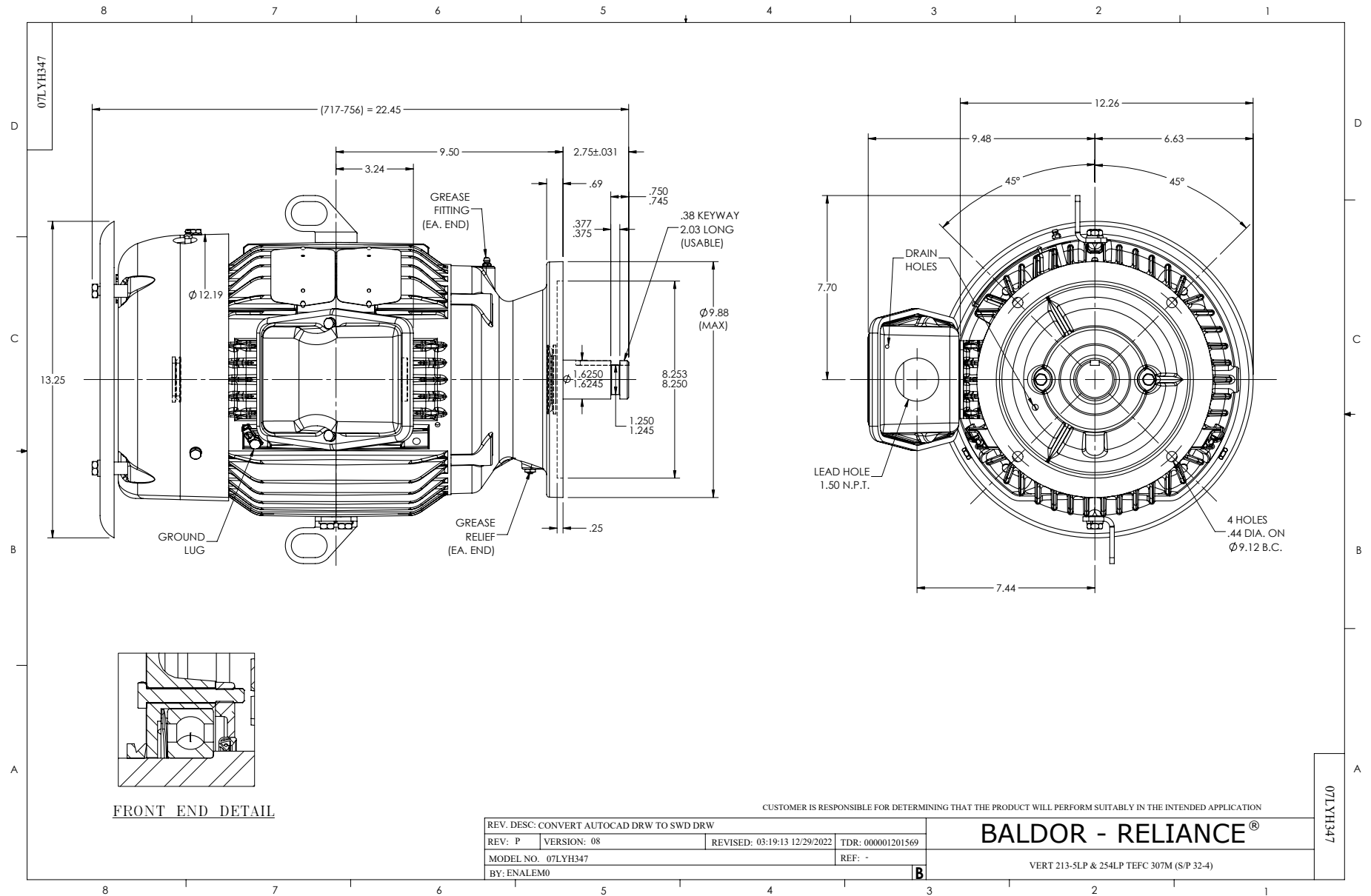
7.5 HP 3 PH 60 HZ 3510 RPM 460 V 0732M

Typical performance - not guaranteed values.

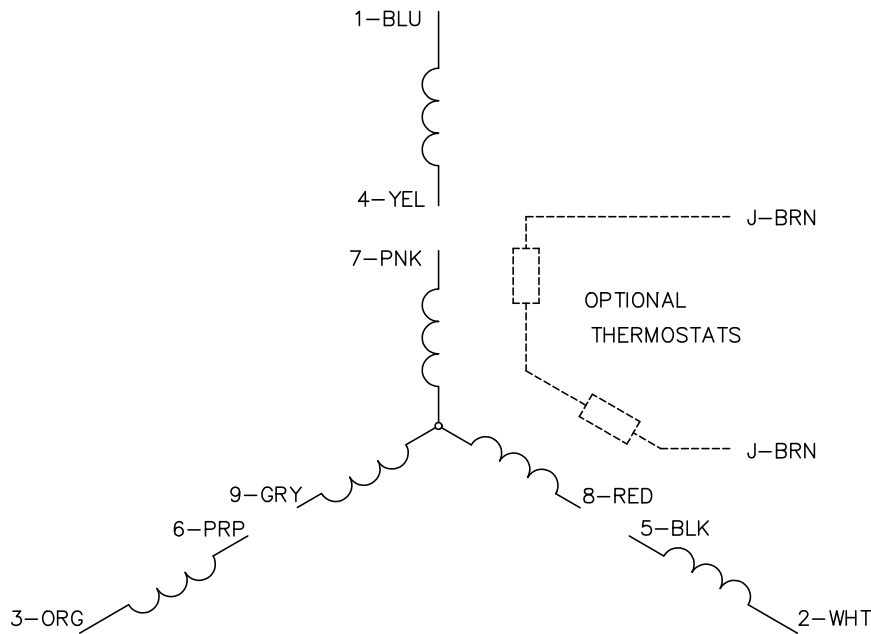
TORQUES (LB-FT): PO=45.1 PU=15 LR=21.3 LRA=61.4



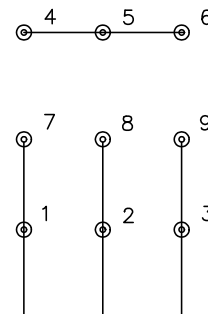
11/24/2024 ACPERF, record # 47061



CD0005

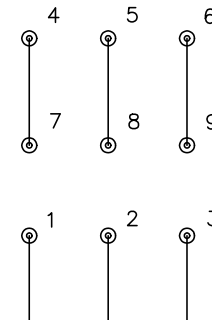


LOW VOLTAGE  
(2Y)



LINE

HIGH VOLTAGE  
(1Y)



LINE

**NOTES:**

1. INTERCHANGE ANY TWO LINE LEADS TO REVERSE ROTATION.
2. OPTIONAL THERMOSTATS ARE PROVIDED WHEN SPECIFIED.
3. ACTUAL NUMBER OF INTERNAL PARALLEL CIRCUITS MAY BE A MULTIPLE OF THOSE SHOWN ABOVE.
4. LEAD COLORS ARE OPTIONAL. LEADS MUST ALWAYS BE NUMBERED AS SHOWN.

CD0005

REV. DESC: REVISE TO SHOW OPTIONAL COLORS			
REV. LTR: E	BY: JLP	REVISED: 01/19/99 10:15	TDR: 0171435
S00000		FILE: AAA00005140	MDL: -
		MTL: -	

**BALDOR ELECTRIC Co.**

3PH, DV, 9 LEADS