

BALDOR® • RELIANCE™

Customer information packet

VPECP4313T

75HP, 3555RPM, 3PH, 60HZ, 365VP, TEFC, V1

Class - None

Division - Not Applicable

Copyright © All product information within this document is subject to ABB Motors and Mechanical Inc. copyright © protection, unless otherwise noted.

11/24/2024 7:37:11 AM

Specifications

Enclosure	TEFC
Frame	365VP
Frame Material	Iron
Frequency	60.00 Hz
Haz Area Class and Group	None
Haz Area Division	Not Applicable
Motor Letter Type	Three Phase
Output @ Frequency	75.000 HP @ 60 HZ
Phase	3
Synchronous Speed @ Frequency	3600 RPM @ 60 HZ
Voltage @ Frequency	230.0 V @ 60 HZ 460.0 V @ 60 HZ
Agency Approvals	CSA EEV
Ambient Temperature	40 °C
Auxillary Box	No Auxillary Box
Base Indicator	No Mounting
Bearing Grease Type	Polyrex EM (-20F +300F)
Constant Torque Speed Range	15-60
Current @ Voltage	161.000 A @ 230.0 V 80.700 A @ 460.0 V
Design Code	B
Drip Cover	Drip Cover
Duty Rating	CONT
Efficiency @ 100% Load	94.5 %
Feedback Device	NO FEEDBACK
Haz Area Temp Code	T3
Heater Indicator	No Heater
High Voltage Full Load Amps	80.7 a
Insulation Class	F
Inverter Code	Inverter Ready
KVA Code	G
Lifting Lugs	Vertical Lifting Lugs

Part detail

Revision	E
Type	AC
Mech. spec.	
Base	
Status	PRD/A
Elec. spec.	A36WG0319
Layout	617438-428
Eff. date	10-24-2024
CD Diagram	416820-002
Poles	02
Leads	3#2,6#4
Proprietary	False
Created date	07-01-2015

Motor Lead Quantity/Wire Size	3 @ 2 AWG
Motor Standards	NEMA
Motor Type	A36068M
Mounting Arrangement	V1
Number of Poles	2
Overall Length	37.25 IN
Power Factor	92
Product Family	General Industrial
Pulley End Bearing Type	Ball
Pulley Face Code	P-Base
Service Factor	1.15
Shaft Ground Indicator	No Shaft Grounding
Shaft Rotation	Reversible
Shaft Slinger Indicator	Shaft Slinger
Speed	3555 rpm
Speed Code	Single Speed
Starting Method	Direct on line
Thermal Device - Bearing	None
Thermal Device - Winding	None

Nameplate

NP2496L



NP3238

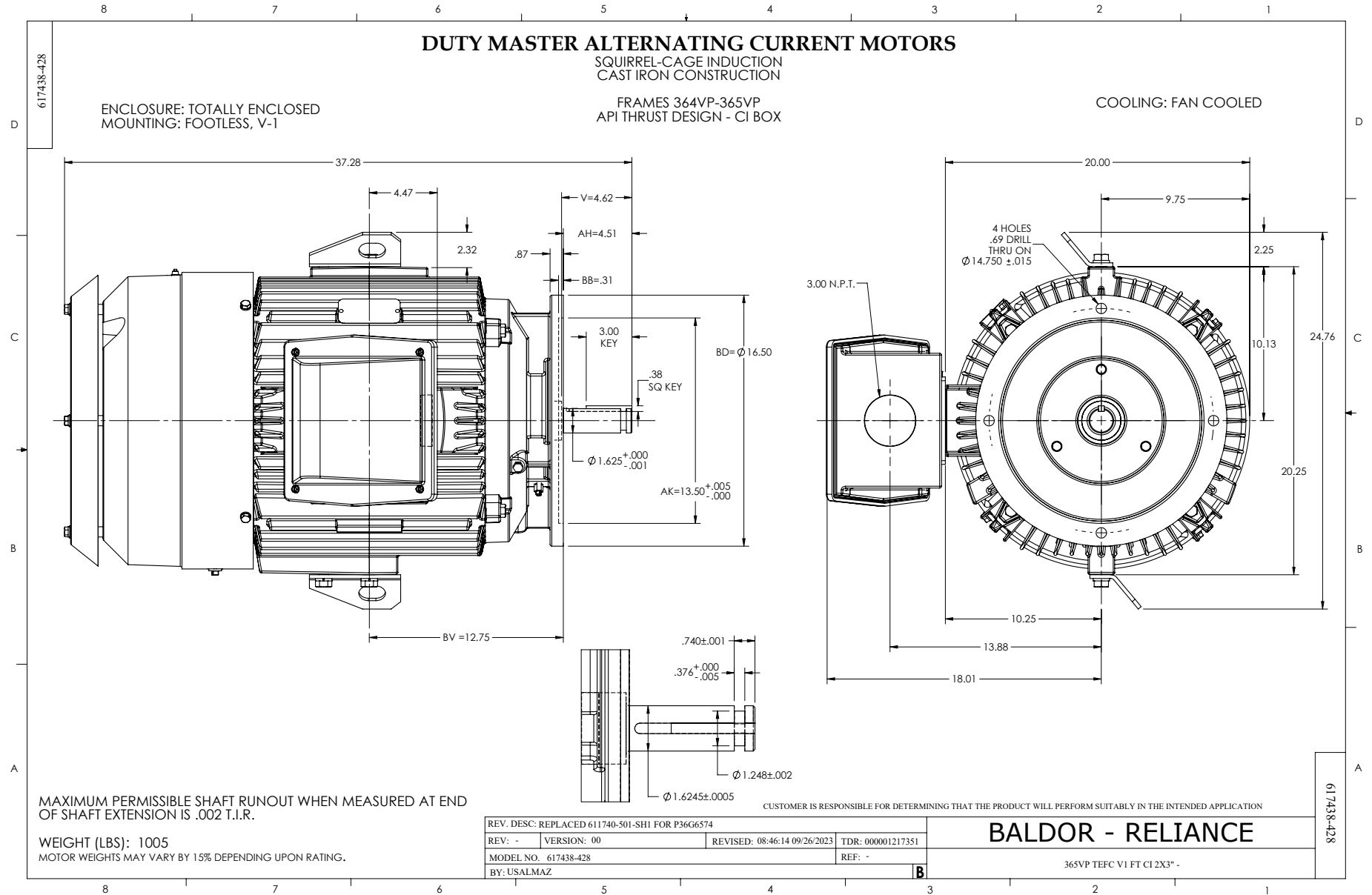
CAT NO	VPECP4313T	SPEC NO.	A36-6893-0319						
HP	75	AMPS	161/80.7	VOLTS	230/460	DESIGN	B		
FRAME	365VP	RPM	3555	HZ	60	AMB	40	SF	1.15
D.E. BRG.DATA	6313	O.D.E. BRG.DATA		PH	3	DUTY	CONT	INSUL.CLASS	F
D.E. BRG.	65BC03JP30X	TYPE	P	ENCL	TEFC	CODE	G		
O.D.E. BRG.		POWER FACTOR	92	NEMA NOM EFFICIENCY	94.5				
3/4 LOAD EFF.		MAX CORR KVAR	5	GUARANTEED EFFICIENCY	93.6				
TEMP CODE	T3	TEMP =	200						
CHP HZ	60-90	CT HZ	15-60	VT HZ	0-60				
INVERTER-TEMP-CODE	T3								
SER.NO.		MOTOR WEIGHT							

Parts list

Part number	Description	Quantity
SA303164	SA A36-6893-0319	1.000 ea
RA290282	RA A36-6893-0319	1.000 ea
421948032	LABEL, MYLAR	1.000 ea
NP2496L	MOTOR LUBE NAMEPLATE	1.000 ea
000613006PU	N/P (RELEASE QTY 10,000) UL CSA LABEL	1.000 ea
000692000FF	N/P	1.000 ea
000692000VD	LABEL WARNING	1.000 ea
NP3238	SS CP XEX SEVERE DUTY MAIN NP,CURUS EEV	1.000 ea
418185012FL	B/BRG ANGULAR SET - 360	1.000 pr
035051010AA	BBLCW W-10	1.000 ea
085922097A	BRKT 360 087793066WCC	1.000 ea
415072001B	CLAMP	1.000 ea
078559035AA	F/C 360 078559035WCC	1.000 ea
034180008FA	KEY 3/8X3/8X1L - 320	1.000 ea
412118006A	DRAIN	1.000 ea
702675001A	FAN 250-440	1.000 ea
004824015A	GREASE POLYREX EM	0.540 lb
032018016DK	HHCS 1/2-13X2L PLTD.	4.000 ea
032018010CK	HHCS 3/8-16X1-1/4 PLTD. 032018010CR	4.000 ea
032018030CK	HHCS 3/8-16X3-3/4 PLATED	3.000 ea
034630002AB	CPLG 1/4" PLATED	1.000 ea
415096002A	CPLG 1/8 HEX TYPE	1.000 ea
415045002H	SLGR	1.000 ea
034017014AB	LCKW 3/8 STD. PLATED	4.000 ea
034017014AB	LCKW 3/8 STD. PLATED	3.000 ea
034530052AB	P/NIP 1/8X6-1/2 Zinc	1.000 ea
034530016BC	P/NIP 1/4X2 GALV. - 320	1.000 ea
034690002AB	PPLG 1/4" PLTD.	1.000 ea
034690002AB	PPLG 1/4" PLTD.	1.000 ea
089495002A	BRKT 360 089495001WCA	1.000 ea
032018012DK	HHCS 1/2-13X1-1/2 PLTD. 032018012DR	4.000 ea

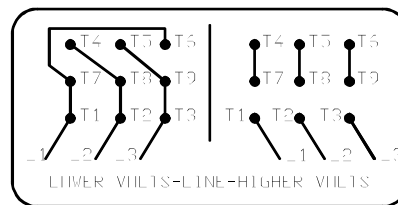
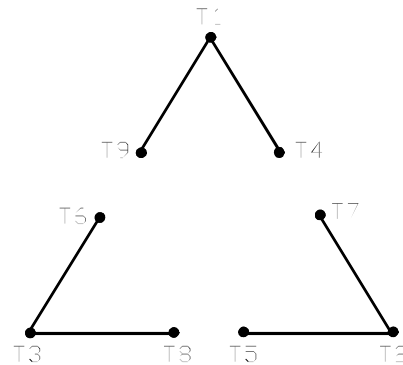
032018030CK	HHCS 3/8-16X3-3/4 PLATED	3.000 ea
415045002E	SLGR	1.000 ea
034017014AB	LCKW 3/8 STD. PLATED	3.000 ea
412118006A	DRAIN	1.000 ea
410700004F	WSHR	1.000 ea
076708000BB	CONDUIT BOX-360	1.000 ea
065776000C	GASKET,MAIN CBOX, 320-400	1.000 ea
076709000A	C/B Cover - 360	1.000 ea
067053000B	GASK 320-400	1.000 ea
418150003A	GREASE FITTING CAP	1.000 ea
032018010CK	HHCS 3/8-16X1-1/4 PLTD. 032018010CR	4.000 ea
032018022CK	HHCS 3/8-16X2-3/4 PLTD	4.000 ea
405851012AN	SPACE	4.000 ea
702641041A	D/CVR 360 SUB PAINT	1.000 ea
034017014AB	LCKW 3/8 STD. PLATED	4.000 ea
035000001A	ALFTG 1/8" 1610-BL	1.000 ea
415000115H	T/LUG #2AWG-4/0AWG	1.000 ea
033512008LB	HHTTS 1/4-20X1 PLATED	4.000 ea
034000014AB	WSH ID.406 OD.812 TH.065	4.000 ea
034000014AB	WSH ID.406 OD.812 TH.065	4.000 ea
048977006B	GRFTG - XP	1.000 ea
035000001A	ALFTG 1/8" 1610-BL	1.000 ea
418150003A	GREASE FITTING CAP	1.000 ea
033775004EA	DRSCR #6-1/4 304 S.S.	4.000 ea
609013011C	LFT/P - 360	2.000 ea
032018012EK	HHCS 5/8-11X1-1/2L PLTD.	4.000 ea
034017018AB	5/8 MED LOCK WASHER ZP (034017018AF)	4.000 ea
034180024FA	KEY 3/8X3/8X3 L	1.000 ea
034017018AB	5/8 MED LOCK WASHER ZP (034017018AF)	2.000 ea
604797045	STD. 400 FRAME SKID	1.000 ea
033102018AG	NUT 5/8-11 PLATED	2.000 ea
032018012EK	HHCS 5/8-11X1-1/2L PLTD.	2.000 ea
604797064C	2"X4"-24"	2.000 ea
604797064C	2"X4"-24"	1.000 ea

604797064C	2"X4"-24"	1.000 ea
604797064C	2"X4"-24"	1.000 ea
415038028A	BLOCK,SHIPPING	1.000 ea
415038028B	BLOCK,SHIPPING	1.000 ea
MG1025N19	WILKO 778.50 BLUE GREEN - 55 GAL DRUMS	0.250 ga
032018005DL	1/2-13 X 5/8 SILICON BRONZE HHCS	1.000 ea



416820-002

A-C MOTOR
 CONNECTION DIAGRAM
 STANDARD 9 LEAD DELTA-CONNECTED



(N.P. 1575-B)

416820-002

REV. DESC: FONT CHANGE FOR PDF SEARCHABLE		
REV. LTR: A	VERSION: 01	TDR: 000001009382
FILE: \MGA\00000\661	REVISED: 02:46:19 02/13/2020	BY: MGHMTT
MTL: -	© □	

BALDOR - RELIANCE®

CONN DIAG - STANDARD 9 LEAD, DELTA-CONNECTED

SH 1 of 1