



---

# Customer information packet

## VRBM3554T

1.5HP, 1710RPM, 3PH, 60HZ, 145TC, 7524M, TEFC

Class - None

Division - Not Applicable

## Specifications

Enclosure	TEFC
Frame	145TC
Frame Material	Aluminum
Frequency	60.00 Hz
Haz Area Class and Group	None
Haz Area Division	Not Applicable
Motor Letter Type	Three Phase
Output @ Frequency	1.500 HP @ 60 HZ
Phase	3
Synchronous Speed @ Frequency	1800 RPM @ 60 HZ
Voltage @ Frequency	230.0 V @ 60 HZ 460.0 V @ 60 HZ
Agency Approvals	UR CSA
Ambient Temperature	40 °C
Base Indicator	No Mounting
Bearing Grease Type	Polyrex EM (-20F +300F)
Blower	None
Current @ Voltage	4.600 A @ 208.0 V 4.300 A @ 230.0 V 2.150 A @ 460.0 V
Design Code	D
Duty Rating	CONT
Efficiency @ 100% Load	81.5 %
Feedback Device	NO FEEDBACK
Heater Indicator	No Heater
High Voltage Full Load Amps	2.2 a
Insulation Class	F
Inverter Code	Not Inverter
KVA Code	J
Motor Lead Quantity/Wire Size	9 @ 18 AWG
Motor Standards	NEMA

## Part detail

Revision	D
Type	AC
Mech. spec.	75J035
Base	
Status	PRD/A
Elec. spec.	75WGW130
Layout	75LYJ035
Eff. date	05-14-2024
CD Diagram	CD0005
Poles	04
Leads	9#18
Proprietary	False
Created date	03-11-2022

<b>Motor Type</b>	7524M
<b>Mounting Arrangement</b>	F1
<b>Number of Poles</b>	4
<b>Overall Length</b>	15.40 IN
<b>Power Factor</b>	80
<b>Product Family</b>	General Purpose
<b>Rodent Screen</b>	None
<b>Service Factor</b>	1.15
<b>Shaft Diameter</b>	0.875 IN
<b>Shaft Rotation</b>	Reversible
<b>Shaft Slinger Indicator</b>	No Slinger
<b>Speed</b>	1710 rpm
<b>Speed Code</b>	Single Speed
<b>Starting Method</b>	Direct on line
<b>Thermal Device - Winding</b>	None
<b>Winding Thermal 1</b>	None
<b>Winding Thermal 2</b>	None

**Nameplate**

<b>NP1256L</b>									
<b>CAT.NO.</b>	VRBM3554T								
<b>SPEC.</b>	75J035W130G1								
<b>HP</b>	1.5								
<b>VOLTS</b>	230/460								
<b>AMP</b>	4.3/2.15								
<b>RPM</b>	1710								
<b>FRAME</b>	145TC		<b>HZ</b>	60		<b>PH</b>	3		
<b>SER.F.</b>	1.15	<b>CODE</b>	J	<b>DES</b>	D	<b>CLASS</b>	F		
<b>NEMA-NOM-EFF</b>	81.5	<b>PF</b>	80						
<b>RATING</b>	40C AMB-CONT								
<b>CC</b>									
<b>DE</b>	6205	<b>ODE</b>	6205						
<b>ENCL</b>	TEFC	<b>SN</b>							
	SFA 4.8/2.4								

## Parts list

Part number	Description	Quantity
SA409098	SA 75J035W130G1	1.000 ea
RA400644	RA 75J035W130G1	1.000 ea
35FN3002A05SP	EXFN, PLASTIC, 6.376 OD, .638 ID	1.000 ea
NS2512A01	INSULATOR, CONDUIT BOX X	1.000 ea
75CB3000A02	COND BOX FOR 75SF2000 (REL# 7932952C)	1.000 ea
51XT1032A10	10-32X.62 HX SLD WASHER TAPP , NLA	3.000 ea
WD4100A01	DP-875 HEYCO PLUG OR 62MP0875 MICRO PLAS	2.000 ea
51XN0832A16	8-32 X 1.00 HEX SLOT WSHR HD MACH SCREW	1.000 ea
11XW1032G06	10-32 X .38, TAPTITE II, HEX WSHR SLTD U	1.000 ea
HW3001B01	BRASS CUP WASHER, FOR #10 SCREW	1.000 ea
HW5100A05	WVY WSHR F/205 & 304 BRGS	1.000 ea
35EP3307F00	MASTER DE,205 BRG.,998SH,#26 DRN	1.000 ea
51XN1032A20	10-32 X 1 1/4 HX WS SL SR	2.000 ea
HW1001A10	WASHER, #10 SPLT LK, ZN X	4.000 ea
HW2501D13	KEY, 3/16 SQ X 1.375	1.000 ea
BR2003D01	SPLINED HUB 7/8 W/O KEY, W/SET SCREWS	1.000 ea
WD4006A01	WIRE JOINT,T&B RB-4 OR RB-44	1.000 ea
35FN3003A02	EXFN, PLASTIC, 5.88 OD, .876 ID (REL)	1.000 ea
35FH4007A01	FAN COVER FOR SHORT SERIES BRAKE, PRIMER	1.000 ea
51XW1032A06	10-32 X .38, TAPTITE II, HEX WSHR SLTD S	4.000 ea
35CB4517	LIPPED LID, 4 MTG HOLES, (RELIANCE# 7932	1.000 ea
51XW0832A07	8-32 X .44, TAPTITE II, HEX WSHR SLTD SE	4.000 ea
HW2501D13	KEY, 3/16 SQ X 1.375	1.000 ea
HA7000A04	KEY RETAINER 0.625 DIA SHAFTS	1.000 ea
85XU0407S04	4X1/4 U DRIVE PIN STAINLESS	2.000 ea
LB1418	INTEGRAL BRK ADJ LABEL (REL# 41171617A)	1.000 ea
MJ1000A02	GREASE, POLYREX EM EXXON	0.050 lb
MG1050G01	CELEROL MEDIUM CHARCOAL METALLIC GRAY	0.017 ga
HA3100A56	THRUBOLT 10-32 X 8.625	4.000 ea
43BK0300B02	SSB-10-230/460 (205)L-HUB	1.000 ea
031389	FAST RESPONSE KIT 230/460V	1.000 ea

LB1242	ADHESIVE PATCH 1.10 X 2.03 X .045 THICK	1.000 ea
WD4006A01	WIRE JOINT,T&B RB-4 OR RB-44	5.000 ea
LC0005E01	CONN.DIA./WARNING LABEL (LC0005/LB1119N)	1.000 ea
NP1256L	ALUM UL CC INDUSTRIAL MOTOR A60	1.000 ea
G7PA1000	PKG GRP, PRINT PK1034A06	1.000 ea
PK3082	STYROFOAM CRADLE	1.000 ea
PE-0000001	ZRTG PE ASSEMBLY	1.000 ea

**AC Induction Motor Performance Data**

Record # 88679

Typical performance - not guaranteed values

Winding: 75WGW130-R001		Type: 7524M	Enclosure: TEFC		
<b>Nameplate Data</b>		<b>460 V, 60 Hz: High Voltage Connection</b>			
Rated Output (HP)	1.5	Full Load Torque	4.62 LB-FT		
Volts	230/460	Start Configuration	direct on line		
Full Load Amps	4.3/2.15	Breakdown Torque	16.26 LB-FT		
R.P.M.	1710	Pull-up Torque	13.01 LB-FT		
Hz	60 Phase	3	Locked-rotor Torque	14.67 LB-FT	
NEMA Design Code	D	KVA Code	J	Starting Current	14.51 A
Service Factor (S.F.)	1.15	No-load Current	1.15 A		
NEMA Nom. Eff.	81.5	Power Factor	80	Line-line Res. @ 25°C	14.1 Ω
Rating - Duty	40C	AMB-CONT		Temp. Rise @ Rated Load	56°C
S.F. Amps	4.8/2.4			Temp. Rise @ S.F. Load	69°C
				Locked-rotor Power Factor	65.1
				Rotor inertia	0.173 lb-ft <sup>2</sup>

**Load Characteristics 460 V, 60 Hz, 1.5 HP**

% of Rated Load	25	50	75	100	125	150	S.F.
Power Factor	39	60	72	80	84	86	82
Efficiency	74.5	82.2	83.4	82.5	80.3	77.3	81.2
Speed	1780	1760	1737	1710	1678	1641	1691
Line amperes	1.22	1.44	1.75	2.14	2.6	3.16	2.42

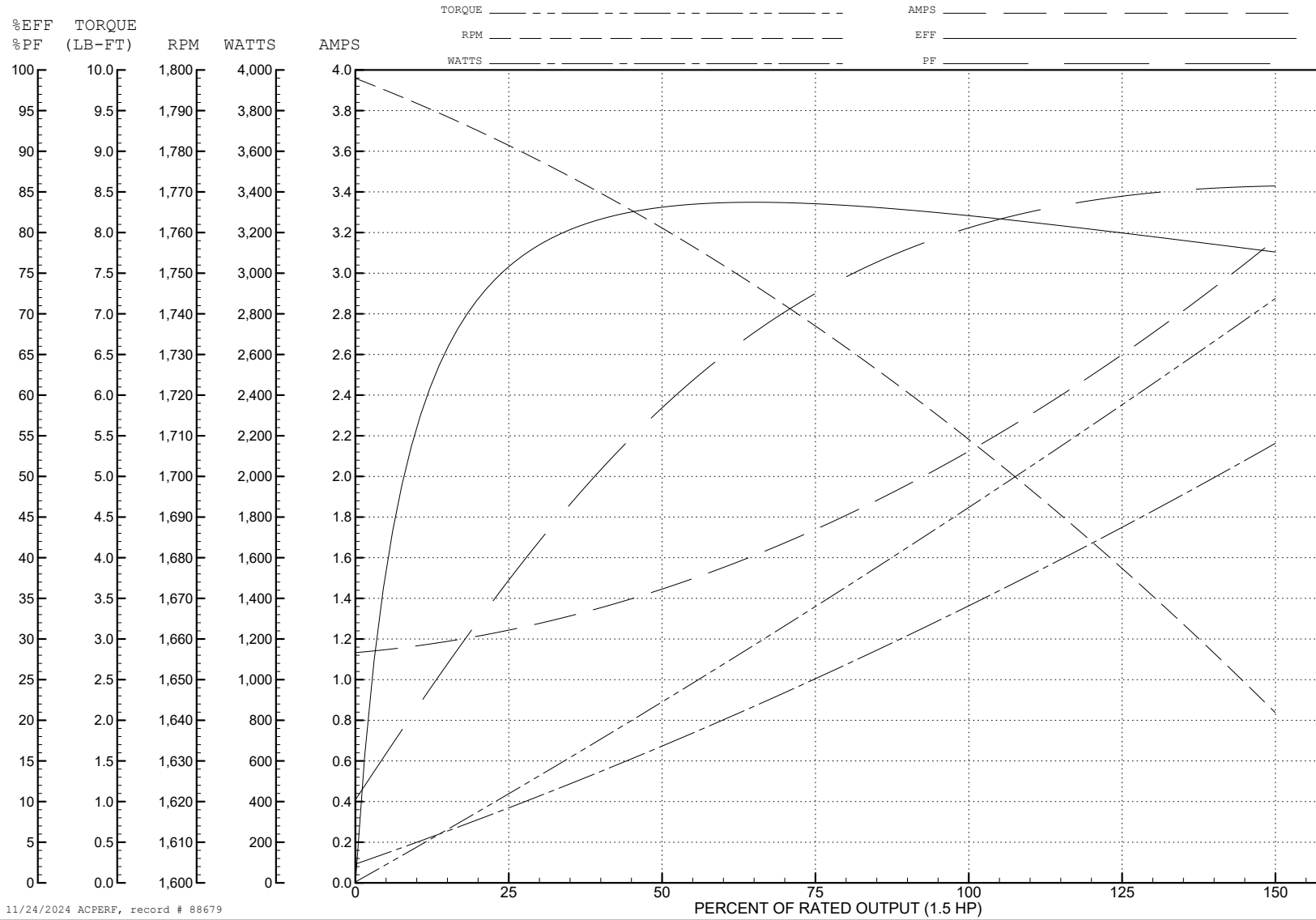
ABB Motors and Mechanical Inc.

WINDING # 75WGW130

Typical performance - not guaranteed values.

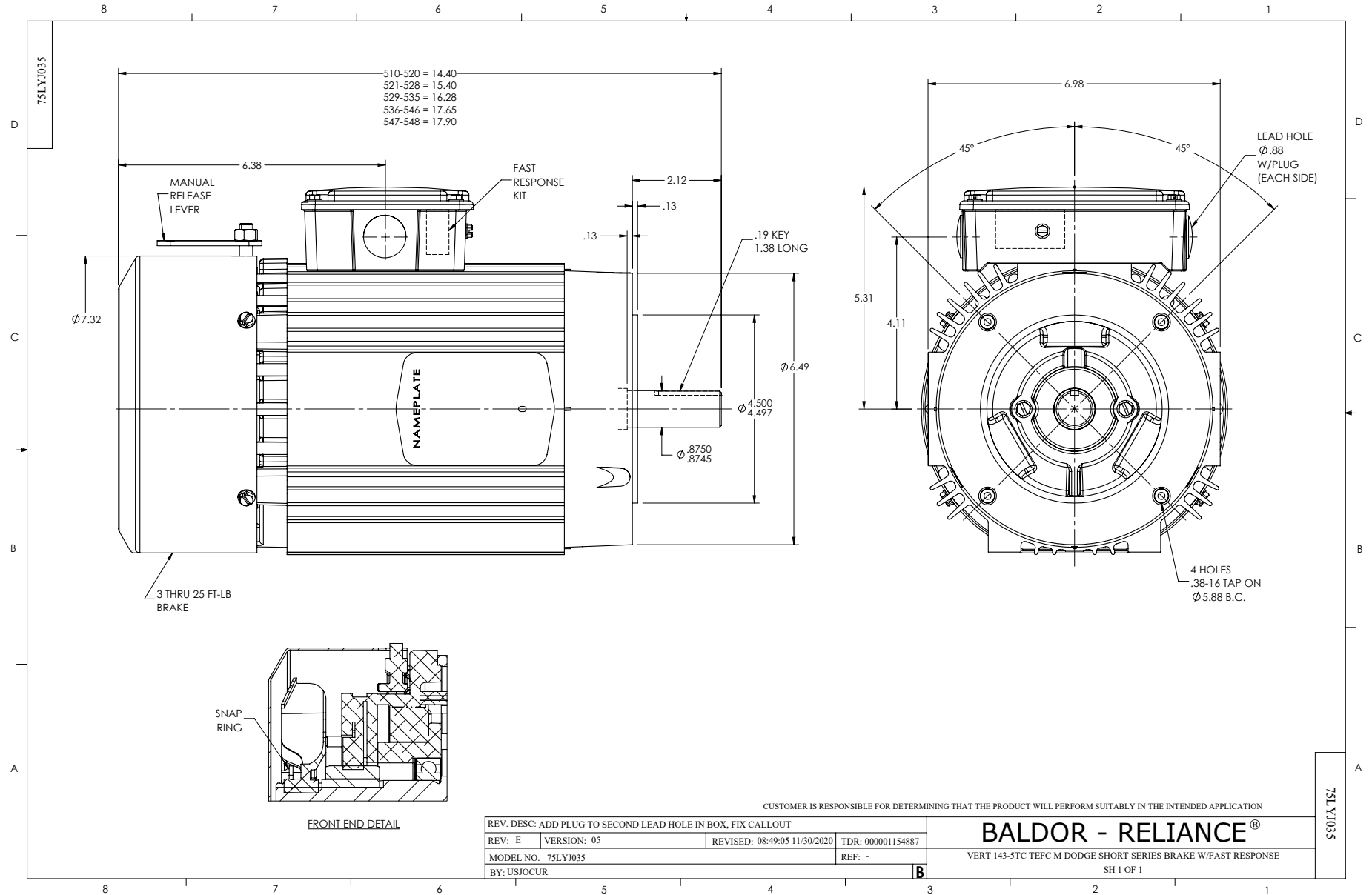
1.5 HP 3 PH 60 HZ 1710 RPM 460 V 7524M

TORQUES (LB-FT): PO=16.26 PU=13.01 LR=14.67 LRA=14.51



11/24/2024 ACPERF, record # 88679





CD0005



LOW VOLTAGE  
(2Y)



LINE

HIGH VOLTAGE  
(1Y)



LINE

NOTES:

1. INTERCHANGE ANY TWO LINE LEADS TO REVERSE ROTATION.
2. OPTIONAL THERMOSTATS ARE PROVIDED WHEN SPECIFIED.
3. ACTUAL NUMBER OF INTERNAL PARALLEL CIRCUITS MAY BE A MULTIPLE OF THOSE SHOWN ABOVE.
4. LEAD COLORS ARE OPTIONAL. LEADS MUST ALWAYS BE NUMBERED AS SHOWN.

CD0005

REV. DESC: REVISE TO SHOW OPTIONAL COLORS			
REV. LTR: E	BY: JLP	REVISED: 01/19/99 10:15	TDR: 0171435
S00000		FILE: AAA00005140	MDL: -
		MTL: -	

**BALDOR ELECTRIC Co.**

3PH, DV, 9 LEADS