



Customer information packet

VRBM3558T

2HP, 1700RPM, 3PH, 60HZ, 145TC, 3528M, TEFC, F1

Class - None

Division - Not Applicable

Specifications

Enclosure	TEFC
Frame	145TC
Frame Material	Aluminum
Frequency	60.00 Hz
Haz Area Class and Group	None
Haz Area Division	Not Applicable
Motor Letter Type	Three Phase
Output @ Frequency	2.000 HP @ 60 HZ
Phase	3
Synchronous Speed @ Frequency	1800 RPM @ 60 HZ
Voltage @ Frequency	460.0 V @ 60 HZ 230.0 V @ 60 HZ
Agency Approvals	C UR US
Ambient Temperature	40 °C
Base Indicator	No Mounting
Bearing Grease Type	Polyrex EM (-20F +300F)
Blower	None
Current @ Voltage	3.600 A @ 460.0 V 7.200 A @ 230.0 V
Design Code	D
Duty Rating	CONT
Efficiency @ 100% Load	80.0 %
Feedback Device	NO FEEDBACK
Heater Indicator	No Heater
High Voltage Full Load Amps	3.6 a
Insulation Class	F
Inverter Code	Not Inverter
KVA Code	L
Motor Lead Quantity/Wire Size	9 @ 18 AWG
Motor Standards	NEMA
Motor Type	3528M
Mounting Arrangement	F1

Part detail

Revision	-
Type	AC
Mech. spec.	75J035
Base	
Status	PRD/A
Elec. spec.	35WGK323
Layout	75LYJ035
Eff. date	10-16-2024
CD Diagram	CD0005
Poles	04
Leads	9#18
Proprietary	False
Created date	09-26-2024

Number of Poles	4
Overall Length	15.43 IN
Power Factor	64
Product Family	General Purpose
Rodent Screen	None
Service Factor	1.15
Shaft Diameter	0.875 IN
Shaft Rotation	Reversible
Shaft Slinger Indicator	No Slinger
Speed	1700 rpm
Speed Code	Single Speed
Starting Method	Direct on line
Thermal Device - Winding	None
Winding Thermal 1	None
Winding Thermal 2	None

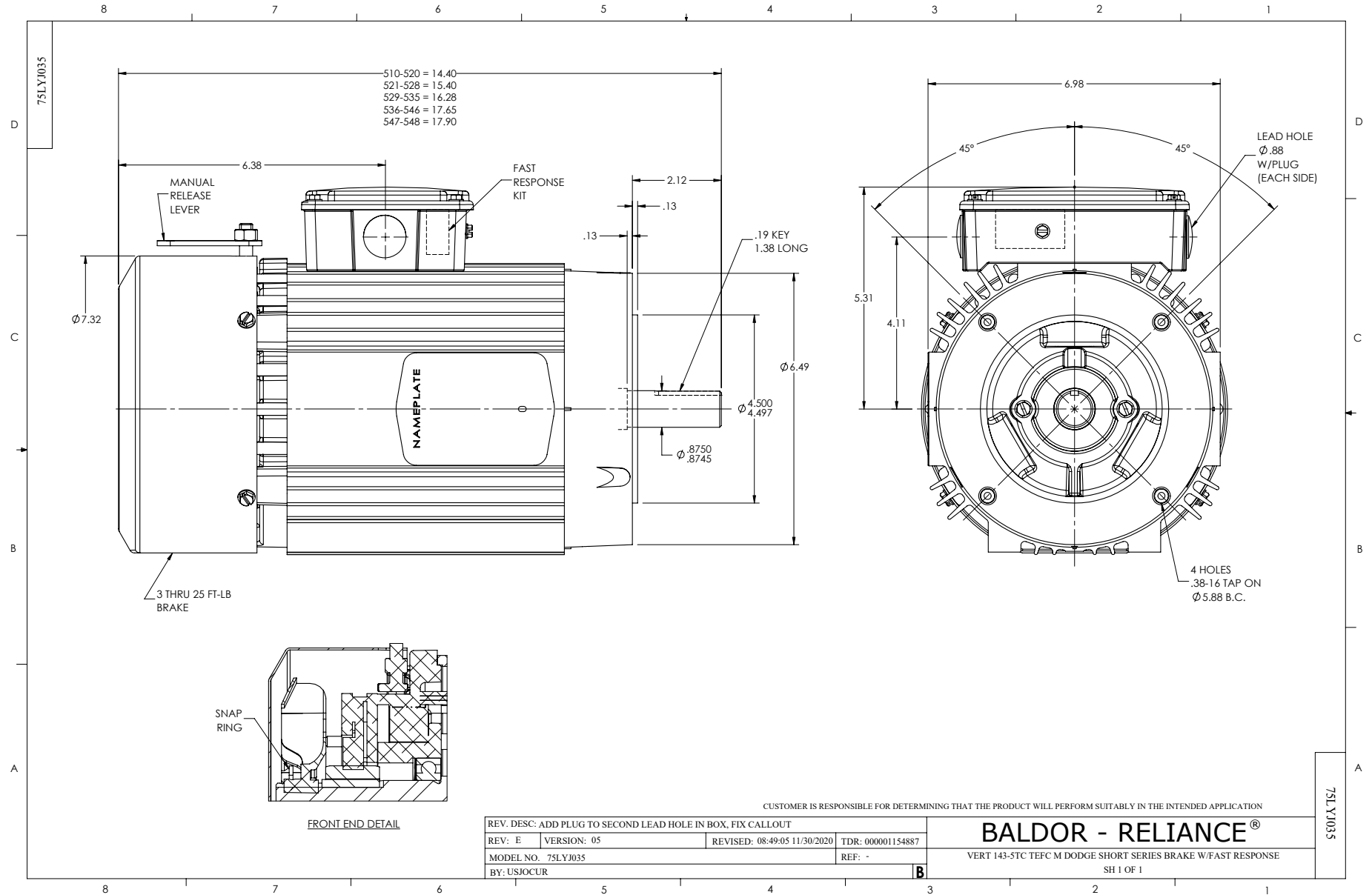
Nameplate

NP1256L									
CAT.NO.	VRBM3558T								
SPEC.	75J035K323								
HP	2								
VOLTS	230/460								
AMP	7.2/3.6								
RPM	1700								
FRAME	145TC		HZ	60		PH	3		
SER.F.	1.15	CODE	L	DES	D	CLASS	F		
NEMA-NOM-EFF	80	PF	64						
RATING	40C AMB-CONT								
CC									
DE	6205		ODE	6205					
ENCL	TEFC	SN							
	SFA 7.76/3.88								

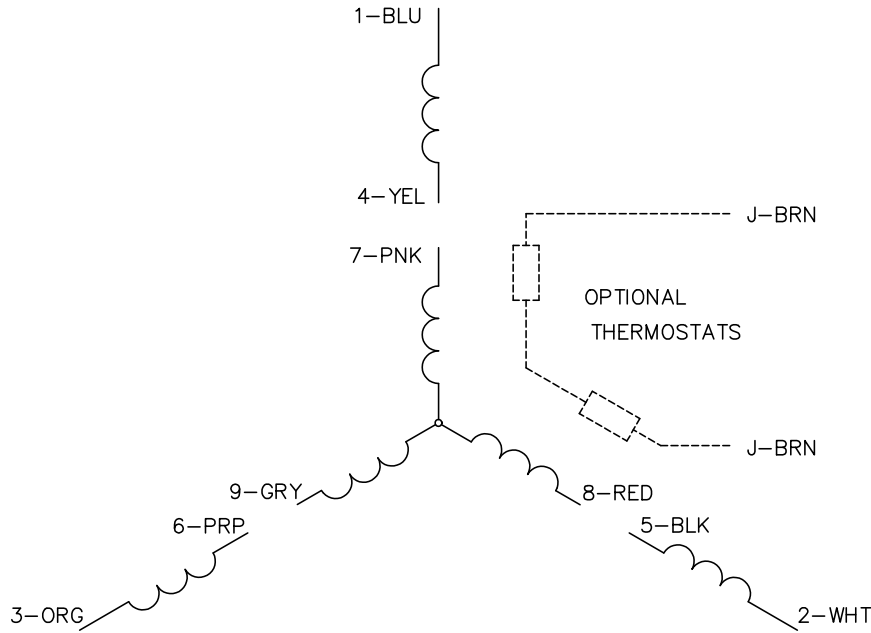
Parts list

Part number	Description	Quantity
SA430957	SA 75J035K323	1.000 ea
RA423177	RA 75J035K323	1.000 ea
34FN3002B01	EXTERNAL FAN, PLASTIC, .637/.639 HUB W/	1.000 ea
NS2512A01	INSULATOR, CONDUIT BOX X	1.000 ea
75CB3000A02	COND BOX FOR 75SF2000 (REL# 7932952C)	1.000 ea
51XT1032A10	10-32X.62 HX SLD WASHER TAPP , NLA	3.000 ea
WD4100A01	DP-875 HEYCO PLUG OR 62MP0875 MICRO PLAS	2.000 ea
51XN0832A16	8-32 X 1.00 HEX SLOT WSHR HD MACH SCREW	1.000 ea
11XW1032G06	10-32 X .38, TAPTITE II, HEX WSHR SLTD U	1.000 ea
HW3001B01	BRASS CUP WASHER, FOR #10 SCREW	1.000 ea
HW5100A05	WVY WSHR F/205 & 304 BRGS	1.000 ea
35EP3307F00	MASTER DE,205 BRG.,998SH,#26 DRN	1.000 ea
51XN1032A20	10-32 X 1 1/4 HX WS SL SR	2.000 ea
HW1001A10	WASHER, #10 SPLT LK, ZN X	4.000 ea
HW2501D13	KEY, 3/16 SQ X 1.375	1.000 ea
BR2003D01	SPLINED HUB 7/8 W/O KEY, W/SET SCREWS	1.000 ea
WD4006A01	WIRE JOINT,T&B RB-4 OR RB-44	1.000 ea
35FN3003A02	EXFN, PLASTIC, 5.88 OD, .876 ID (REL)	1.000 ea
35FH4007A01	FAN COVER FOR SHORT SERIES BRAKE, PRIMER	1.000 ea
51XW1032A06	10-32 X .38, TAPTITE II, HEX WSHR SLTD S	4.000 ea
35CB4517	LIPPED LID, 4 MTG HOLES, (RELIANCE# 7932	1.000 ea
51XW0832A07	8-32 X .44, TAPTITE II, HEX WSHR SLTD SE	4.000 ea
HW2501D13	KEY, 3/16 SQ X 1.375	1.000 ea
HA7000A04	KEY RETAINER 0.625 DIA SHAFTS	1.000 ea
85XU0407S04	4X1/4 U DRIVE PIN STAINLESS	2.000 ea
LB1418	INTEGRAL BRK ADJ LABEL (REL# 41171617A)	1.000 ea
MJ1000A02	GREASE, POLYREX EM EXXON	0.050 lb
HW1001A10	WASHER, #10 SPLT LK, ZN X	4.000 ea
MG1050G01	CELEROL MEDIUM CHARCOAL METALLIC GRAY	0.017 ga
HA3100A16	THRUBOLT 10-32 X 8.750	4.000 ea
43BK0300B02	SSB-10-230/460 (205)L-HUB	1.000 ea

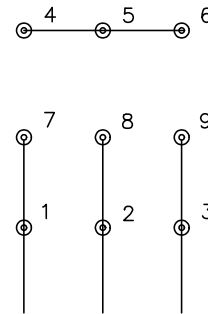
031389	FAST RESPONSE KIT 230/460V	1.000 ea
LB1242	ADHESIVE PATCH 1.10 X 2.03 X .045 THICK	1.000 ea
LC0005E01	CONN.DIA./WARNING LABEL (LC0005/LB1119N)	1.000 ea
NP1256L	ALUM UL CC INDUSTRIAL MOTOR A60	1.000 ea
G7PA1000	PKG GRP, PRINT PK1034A06	1.000 ea
PK3082	STYROFOAM CRADLE	1.000 ea
WD4006A01	WIRE JOINT, T&B RB-4 OR RB-44	5.000 ea
PE-0000001	ZRTG PE ASSEMBLY	1.000 ea



CD0005

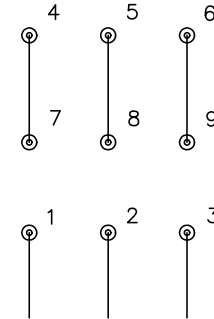


LOW VOLTAGE
(2Y)



LINE

HIGH VOLTAGE
(1Y)



LINE

NOTES:

1. INTERCHANGE ANY TWO LINE LEADS TO REVERSE ROTATION.
2. OPTIONAL THERMOSTATS ARE PROVIDED WHEN SPECIFIED.
3. ACTUAL NUMBER OF INTERNAL PARALLEL CIRCUITS MAY BE A MULTIPLE OF THOSE SHOWN ABOVE.
4. LEAD COLORS ARE OPTIONAL. LEADS MUST ALWAYS BE NUMBERED AS SHOWN.

CD0005

REV. DESC: REVISE TO SHOW OPTIONAL COLORS			
REV. LTR: E	BY: JLP	REVISED: 01/19/99 10:15	TDR: 0171435
S00000		FILE: AAA00005140	MDL: -
		MTL: -	

BALDOR ELECTRIC Co.

3PH, DV, 9 LEADS