



Customer information packet

VXM050742-5

.75HP, 1765RPM, 3PH, 60HZ, 56C, 3514M, XPFC, F1

Class - CLI GP D; CLII GP F,G

Division - Division I

Specifications

Enclosure	XPFC
Frame	56C
Frame Material	Steel
Frequency	60.00 Hz
Haz Area Class and Group	CLI GP D; CLII GP F,G
Haz Area Division	Division I
Motor Letter Type	Three Phase
Output @ Frequency	.750 HP @ 60 HZ
Phase	3
Synchronous Speed @ Frequency	1800 RPM @ 60 HZ
Voltage @ Frequency	575.0 V @ 60 HZ
Agency Approvals	CSA EEV UL
Ambient Temperature	40 °C
Auxillary Box	No Auxillary Box
Auxillary Box Lead Termination	None
Base Indicator	No Mounting
Bearing Grease Type	Polyrex EM (-20F +300F)
Blower	None
Constant Torque Speed Range	6
Current @ Voltage	.960 A @ 575.0 V
Design Code	B
Drip Cover	No Drip Cover
Duty Rating	CONT
Efficiency @ 100% Load	82.5 %
Electrically Isolated Bearing	Not Electrically Isolated
Feedback Device	NO FEEDBACK
Front Shaft Indicator	None
Haz Area Temp Code	T3C
Heater Indicator	No Heater
High Voltage Full Load Amps	1.0 a
Insulation Class	F

Part detail

Revision	B
Type	AC
Mech. spec.	35E374
Base	
Status	PRD/A
Elec. spec.	35WGG123
Layout	35LYE374
Eff. date	10-21-2024
CD Diagram	CD0006
Poles	04
Leads	3#18
Proprietary	False
Created date	02-23-2023

Inverter Code	Inverter Ready
KVA Code	K
Lifting Lugs	No Lifting Lugs
Locked Bearing Indicator	Locked Bearing
Max Speed	2700 rpm
Motor Lead Quantity/Wire Size	3 @ 18 AWG
Motor Lead Termination	Flying Leads
Motor Standards	NEMA
Motor Type	X3514M
Mounting Arrangement	F1
Number of Poles	4
Overall Length	14.28 IN
Power Factor	73
Product Family	Hazardous Location Motor
Pulley End Bearing Type	Ball
Pulley Face Code	C-Face
Pulley Shaft Indicator	Standard
Rodent Screen	None
Service Factor	1.15
Shaft Diameter	0.625 IN
Shaft Ground Indicator	No Shaft Grounding
Shaft Rotation	Reversible
Speed	1765 rpm
Speed Code	Single Speed
Starting Method	Direct on line
Thermal Device - Bearing	None
Thermal Device - Winding	Normally Closed Thermostat
Vibration Sensor Indicator	No Vibration Sensor
Winding Thermal 1	None
Winding Thermal 2	None

Nameplate

NP0887XPSLEV

NO.		CC					
S/N		TEMP CODE	T3C				
SPEC.	35E374G123	INV.TYPE	PWM				
CAT.NO.	VXM050742-5	C HP FR	60	C HP TO	90		
HP	.75	CT HZ FROM	6	CT HZ TO	60		
VOLTS	575	VT HZ FROM	6	VT HZ TO	60		
AMPS	.96	MAG CUR	.66				
RPM	1765	MX RPM	2700				
HZ	60	PH	3	CL	F	NOM.EFF.	82.5
SER.F.	1.15	DES	B	SL HZ	1.2	WK2	0.101
FRAME	56C	RATING	40C AMB-CONT				
	SFA 1.05						
	1.15 SF ON SINE WAVE						

Parts list

Part number	Description	Quantity
SA414995	SA 35E374G123	1.000 ea
RA406764	RA 35E374G123	1.000 ea
35CB3001A01SP	EXPL CONDUIT BOX, MACH, 1/2" PIPE TAP LE	1.000 ea
11XW1032G06	10-32 X .38, TAPTITE II, HEX WSHR SLTD U	1.000 ea
HW3001B01	BRASS CUP WASHER, FOR #10 SCREW	1.000 ea
35EP3700A01SP	FR ENDPLATE, XPFC	1.000 ea
HW5100A03	WAVY WASHER (W1543-017)	1.000 ea
35EP3702A01SP	PU EP-205 BRG-35X-56C-143-5TC	1.000 ea
XY3118A12	5/16-18 HEX NUT DIRECTIONAL SERRATION	4.000 ea
HA3013A01	1/2-20X5/8 SPL.HX BOLT	2.000 ea
HW3021C06	3/32 DI X .625 PIN (F/S)	2.000 ea
51XB1214A16	12-14X1.00 HXWSSLD SERTYB	1.000 ea
35FH4005A01SP	IEC FH NO GREASER W/PRIMED	1.000 ea
51XW1032A06	10-32 X .38, TAPTITE II, HEX WSHR SLTD S	3.000 ea
35CB3500A01SP	CONDUIT BOX LID, MACH	1.000 ea
51XN2520A16	SCREW, HEX WS SLT, ZN, 1/4-20 X 1.00	4.000 ea
HW2501D13	KEY, 3/16 SQ X 1.375	1.000 ea
HA7000A04	KEY RETAINER 0.625 DIA SHAFTS	1.000 ea
85XU0407S04	4X1/4 U DRIVE PIN STAINLESS	6.000 ea
NP0018F	ALUM UL XP CONDUIT BOX NAMEPLATE	1.000 ea
HA1025A21	WSHR,FELT .125" THK	1.000 ea
LB1624	COMBINED WARNING LABEL, ISO/ANSI PICTOGR	1.000 ea
LC0006	CONNECTION LABEL	1.000 ea
PK3082	STYROFOAM CRADLE	1.000 ea
NP0887XPSLEV	SS XP INV UL CSA-EEV CC CL-I GP-D	1.000 ea
MN416A01	TAG-INSTAL-MAINT no wire (2500bx)4/22	1.000 ea
NP0018F	ALUM UL XP CONDUIT BOX NAMEPLATE	1.000 ea
35FN3002A05SP	EXFN, PLASTIC, 6.376 OD, .638 ID	1.000 ea
51XB1214A16	12-14X1.00 HXWSSLD SERTYB	1.000 ea
MJ1000A02	GREASE, POLYREX EM EXXON	0.050 lb
HA3104A06	THRUBOLT 5/16-18 X 8.50 OHIO ROD	4.000 ea

MG1500Y02	WILKOPON PRIMER YELLOW	0.022 ga
MG1025G29	WILKOFAST, 789.229, DARK CHARCOAL GRAY	0.022 ga
36PA1000	PKG GRP, PRINT PK1016A06	1.000 ea

AC Induction Motor Performance Data

Record # 88373

Typical performance - not guaranteed values

Winding: 35WGG123-R007		Type: 3514M	Enclosure: OPEN	
Nameplate Data		575 V, 60 Hz: Single Voltage Motor		
Rated Output (HP)	.75	Full Load Torque	2.25 LB-FT	
Volts	575	Start Configuration	direct on line	
Full Load Amps	.93	Breakdown Torque	7.36 LB-FT	
R.P.M.	1765	Pull-up Torque	4.05 LB-FT	
Hz	60 Phase	3	Locked-rotor Torque	4.68 LB-FT
NEMA Design Code	B KVA Code	K	Starting Current	6.16 A
Service Factor (S.F.)		1.15	No-load Current	0.589 A
NEMA Nom. Eff.	82.5 Power Factor	73	Line-line Res. @ 25°C	49.2 Ω
Rating - Duty		40C AMB-CONT	Temp. Rise @ Rated Load	24°C
S.F. Amps		1.09	Temp. Rise @ S.F. Load	28°C
			Locked-rotor Power Factor	66
			Rotor inertia	0.101 lb-ft ²

Load Characteristics 575 V, 60 Hz, 0.75 HP

% of Rated Load	25	50	75	100	125	150	S.F.
Power Factor	34	52	65	74	80	83	78
Efficiency	71.1	80.8	83.1	83.6	82.8	81	83.1
Speed	1790	1782	1773	1763	1753	1740	1757
Line amperes	0.61	0.682	0.782	0.913	1.07	1.26	1.01

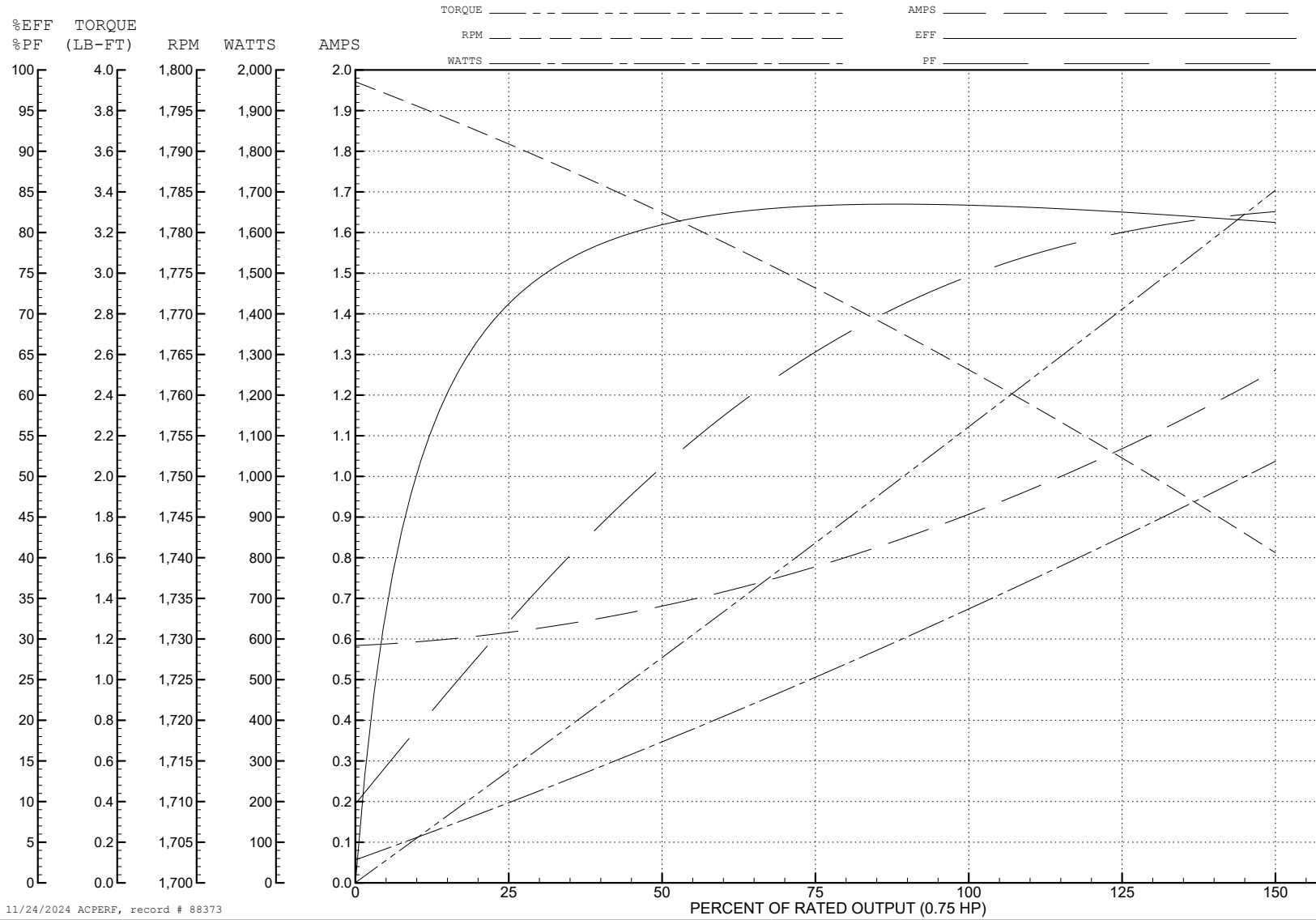
ABB Motors and Mechanical Inc.

WINDING # 35WGG123

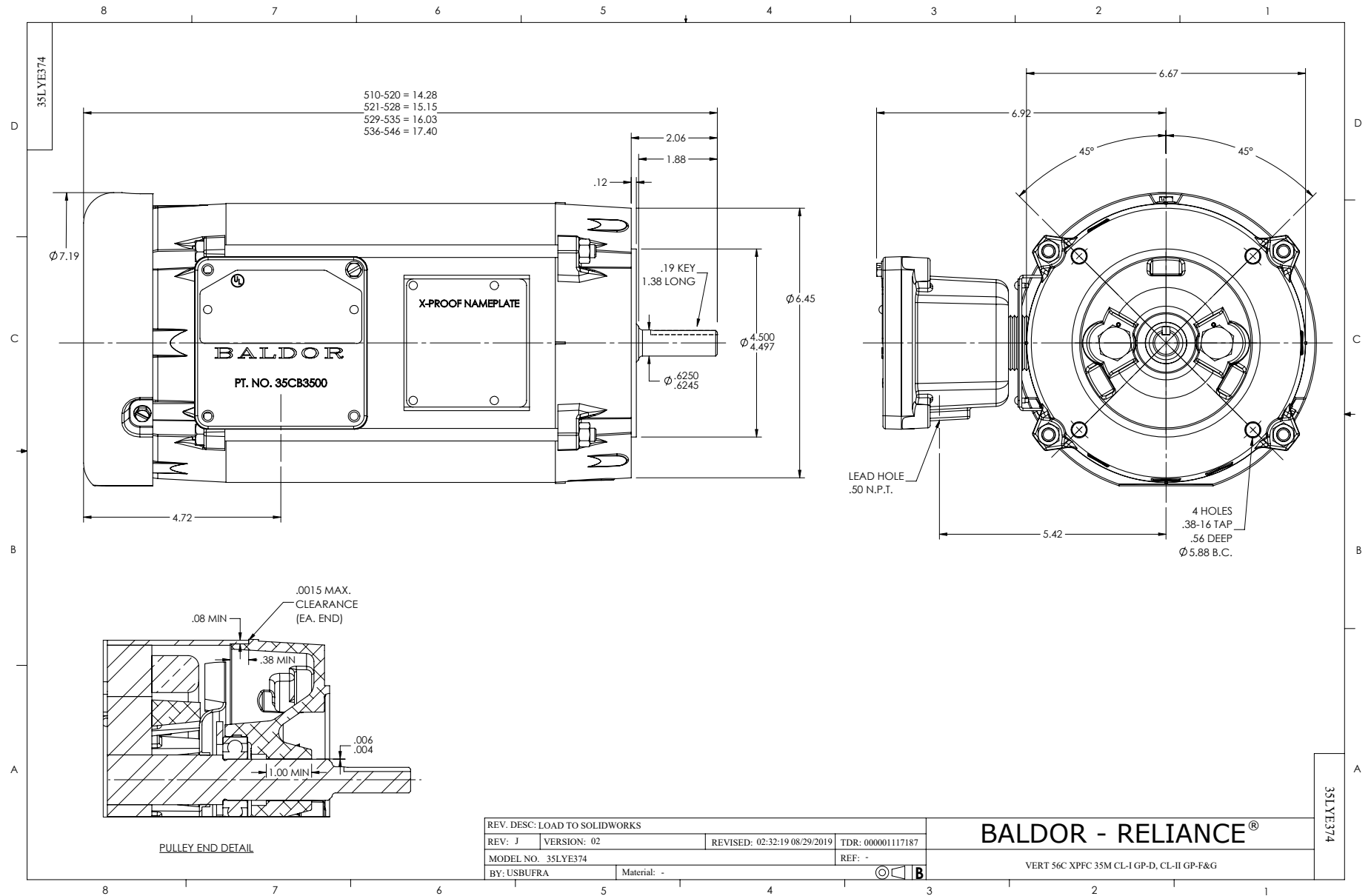
Typical performance - not guaranteed values.

0.75 HP 3 PH 60 HZ 1765 RPM 575 V 3514M

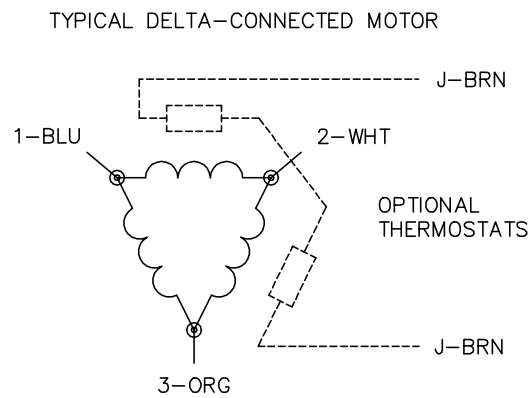
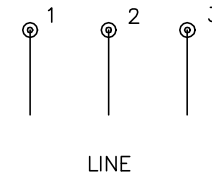
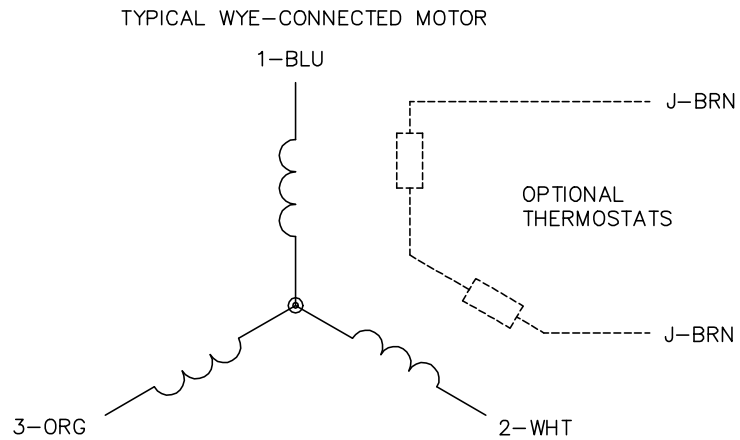
TORQUES (LB-FT): PO=7.36 PU=4.05 LR=4.68 LRA=6.16



11/24/2024 ACPERF, record # 88373



CD0006



NOTES:

1. THREE LEAD MOTOR MAY BE EITHER WYE CONNECTED OR DELTA CONNECTED.
2. INTERCHANGE ANY TWO LINE LEADS TO REVERSE ROTATION.
3. OPTIONAL THERMOSTATS ARE PROVIDED WHEN SPECIFIED.
4. ACTUAL NUMBER OF INTERNAL PARALLEL CIRCUITS MAY VARY.
5. LEAD COLORS ARE OPTIONAL. LEADS MUST BE NUMBERED AS SHOWN.

CD0006

REV. DESC: ADD CLASS CONN00000007		
REV. LTR: E	VERSION: 01	TDR: 000001099922
FILE: \AAA\00005\141	REVISED: 10:24:49 02/19/2019	BY: ENBRIRO
MTL: -	© □	

BALDOR - RELIANCE®

3PH, SV, 3 LEADS, WYE OR DELTA CONNECTED

SH 1 of 1