

BALDOR • RELIANCE

Customer information packet

WCL1409T

5HP, 3450RPM, 1PH, 60HZ, 184TCZ, 3634L, OPEN

Class - None

Division - Not Applicable

Specifications

Enclosure	OPEN
Frame	184TCZ
Frame Material	Steel
Frequency	60.00 Hz
Haz Area Class and Group	None
Haz Area Division	Not Applicable
Motor Letter Type	Cap Start, Induction Run
Output @ Frequency	5.000 HP @ 60 HZ
Phase	1
Synchronous Speed @ Frequency	3600 RPM @ 60 HZ
Voltage @ Frequency	230.0 V @ 60 HZ
Agency Approvals	CSA UR
Ambient Temperature	40 °C
Auxillary Box	No Auxillary Box
Auxillary Box Lead Termination	None
Base Indicator	Rigid
Bearing Grease Type	Polyrex EM (-20F +300F)
Blower	None
Current @ Voltage	24.000 A @ 208.0 V 23.000 A @ 230.0 V
Design Code	L
Drip Cover	No Drip Cover
Duty Rating	CONT
Efficiency @ 100% Load	75.0 %
Electrically Isolated Bearing	Not Electrically Isolated
Feedback Device	NO FEEDBACK
Front Face Code	Standard
Front Shaft Indicator	None
Heater Indicator	No Heater
High Voltage Full Load Amps	23.0 a
Insulation Class	F

Part detail

Revision	AH
Type	AC
Mech. spec.	36E775
Base	
Status	PRD/A
Elec. spec.	36WG0190
Layout	36LYE775
Eff. date	05-09-2024
CD Diagram	CD0017A01
Poles	02
Leads	2#10 A PH,2#16 B PH
Proprietary	False
Created date	01-01-0001

Inverter Code	Not Inverter
KVA Code	F
Lifting Lugs	No Lifting Lugs
Locked Bearing Indicator	Locked Bearing
Motor Lead Exit	Ko Box
Motor Lead Quantity/Wire Size	2 @ 10 AWG, A PH
Motor Lead Termination	Flying Leads
Motor Standards	NEMA
Motor Type	3634L
Mounting Arrangement	F1
Number of Poles	2
Overall Length	19.69 IN
Power Factor	88
Product Family	General Purpose
Pulley End Bearing Type	Ball
Pulley Face Code	C-Face
Pulley Shaft Indicator	Tapped & Key
Rodent Screen	Included
Service Factor	1.15
Shaft Diameter	0.875 IN
Shaft Extension Location	Pulley End
Shaft Ground Indicator	No Shaft Grounding
Shaft Rotation	Reversible
Shaft Slinger Indicator	No Slinger
Speed	3450 rpm
Speed Code	Single Speed
Starting Method	Direct on line
Thermal Device - Bearing	None
Thermal Device - Winding	None
Vibration Sensor Indicator	No Vibration Sensor
Winding Thermal 1	None
Winding Thermal 2	None

Nameplate

NP1256L									
CAT.NO.	WCL1409T								
SPEC.	36E775-190								
HP	5								
VOLTS	230								
AMP	23								
RPM	3450								
FRAME	184TCZ	HZ	60	PH	1				
SER.F.	1.15	CODE	F	DES	L	CLASS	F		
NEMA-NOM-EFF	75	PF	88						
RATING	40C AMB-CONT								
CC									
DE	6207	ODE	6205						
ENCL	OPEN	SN							

Parts list

Part number	Description	Quantity
SA034725	SA 36E775-190	1.000 ea
RA030753	RA 36E775-190	1.000 ea
36CB3004	36 CB CASTING W/1.09 DIA LEAD HOLE @ 6:0	1.000 ea
51XB1016A08	10-16X 1/2HXWSSLD SERTYB	2.000 ea
11XW1032G06	10-32 X .38, TAPTITE II, HEX WSHR SLTD U	1.000 ea
HW3001B01	BRASS CUP WASHER, FOR #10 SCREW	1.000 ea
36EP3204D00	MASTER ODE,205 BRG,GRSR,RLF	1.000 ea
HW4500A01	1641B(ALEMITE)400 UNIV, GREASE FITT	1.000 ea
HW4500A17	317400 ALEMITE GREASE RELIEF	1.000 ea
HA1103A08	RODENT SCREEN, 36 FRAME, OPEN, FRONT END	1.000 ea
HW1000A10	#10 FLAT WASHER (SAE)	4.000 ea
SP1008A01	BAFFLE, MODEL 36 & 37	1.000 ea
13XF0832A08	8-32 X.50 PAN HD,SLTD, TYPE F SCREW, ZIN	2.000 ea
10XN2520A12	1/4-20 X 3/4 HEX HEAD CAP	2.000 ea
HW5100A05	WVY WSHR F/205 & 304 BRGS	1.000 ea
36EP1206A24	PU ENDPLATE, MACH	1.000 ea
HW4500A01	1641B(ALEMITE)400 UNIV, GREASE FITT	1.000 ea
HW4500A17	317400 ALEMITE GREASE RELIEF	1.000 ea
36AD2000	AIR BAFFLE	1.000 ea
85XU0407S04	4X1/4 U DRIVE PIN STAINLESS	4.000 ea
HA1102A09	RODENT SCREEN 36 OPEN FAC	2.000 ea
51XW1032A06	10-32 X .38, TAPTITE II, HEX WSHR SLTD S	4.000 ea
51XW1032A06	10-32 X .38, TAPTITE II, HEX WSHR SLTD S	4.000 ea
HW1000A10	#10 FLAT WASHER (SAE)	4.000 ea
10XN2520A26	1/4-20X 1 5/8 HEX HD	4.000 ea
HW1001A25	LOCKWASHER 1/4, ZINC PLT .493 OD, .255 I	4.000 ea
36CB4516	750LIPPED CB LID - GALVANNEAL	1.000 ea
51XW0832A07	8-32 X .44, TAPTITE II, HEX WSHR SLTD SE	4.000 ea
HA2009A01	ALUM SLINGER 307 BRG CLOSE CPL PUMP MOTO	1.000 ea
80XN1032J06	10-32 X 3/8 SET SCREW, HEX SOC, CUP PT	1.000 ea
HW2501D13	KEY, 3/16 SQ X 1.375	1.000 ea

HA7000A01	KEY RETAINER 7/8" DIA SHAFT	1.000 ea
85XU0407S04	4X1/4 U DRIVE PIN STAINLESS	2.000 ea
MJ1000A02	GREASE, POLYREX EM EXXON	0.050 lb
MG1050G01	CELEROL MEDIUM CHARCOAL METALLIC GRAY	0.022 ga
SP5172A01	37 TYPE L TORQ STAT SWITCH LEAD ASSEMBLY	1.000 ea
LB1624	COMBINED WARNING LABEL, ISO/ANSI PICTOGR	1.000 ea
36CB5008A01	CAPACITOR BOX KIT, 36CB3800Z, EC1216C06,	1.000 ea
HA3101A25	THRUBOLT 1/4-20 X 11.000 OHIO ROD	4.000 ea
LC0017	CONN LABEL-1 PHASE-SINGLE VOLT-REV ROTNO	1.000 ea
NP1256L	ALUM UL CC INDUSTRIAL MOTOR A60	1.000 ea
GOPA1000	PKG GRP, PRINT PK1026A06	1.000 ea
MN416A01	TAG-INSTAL-MAINT no wire (2500bx)4/22	1.000 ea
FE-0000004	ZRTG FE ASSEMBLY	1.000 ea

AC Induction Motor Performance Data

Record # 20846

Typical performance - not guaranteed values

Winding: 36WG0190-R002		Type: 3634L	Enclosure: OPEN		
Nameplate Data			230 V, 60 Hz: Single Voltage Motor		
Rated Output (HP)	5	Full Load Torque	7.6 LB-FT		
Volts	230	Start Configuration	direct on line		
Full Load Amps	23	Breakdown Torque	18.7 LB-FT		
R.P.M.	3450	Pull-up Torque	16 LB-FT		
Hz	60 Phase	1	Locked-rotor Torque	18 LB-FT	
NEMA Design Code	L	KVA Code	F	Starting Current	125 A
Service Factor (S.F.)	1.15	No-load Current	9 A		
NEMA Nom. Eff.	75	Power Factor	88	Line-line Res. @ 25°C	0.338 Ω A Ph 1.16 Ω B Ph
Rating - Duty	40C	AMB-CONT	Temp. Rise @ Rated Load	75°C	
S.F. Amps			Temp. Rise @ S.F. Load	90°C	

Load Characteristics 230 V, 60 Hz, 5 HP

% of Rated Load	25	50	75	100	125	150	S.F.
Power Factor	59	76	84	88	90	90	0
Efficiency	63	74.5	77.7	78	76.5	73.6	0
Speed	3559	3524	3485	3440	3387	3318	0
Line amperes	10.9	14.3	18.6	23.6	29.6	36.8	27.2

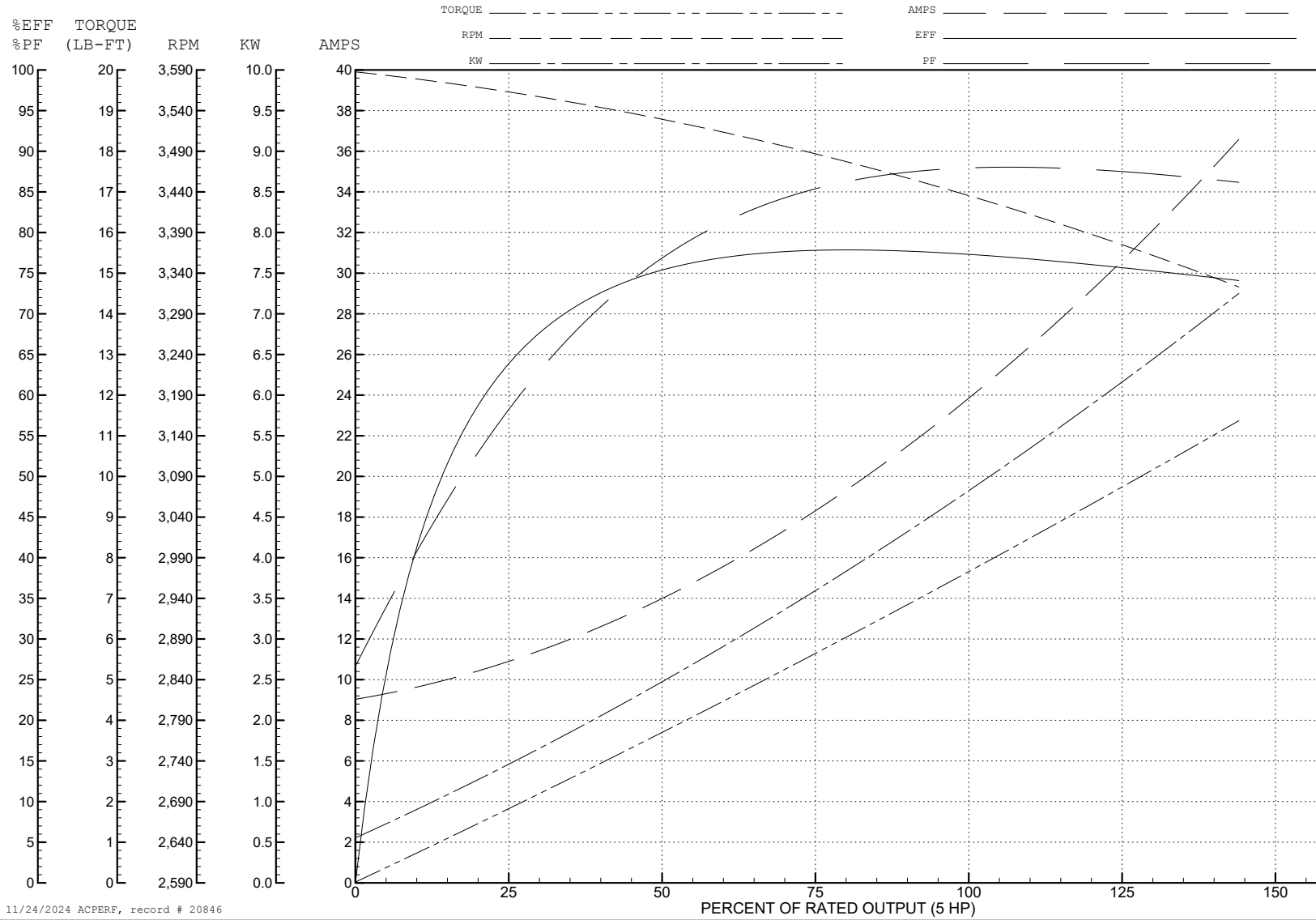
ABB Motors and Mechanical Inc.

WINDING # 36WG0190

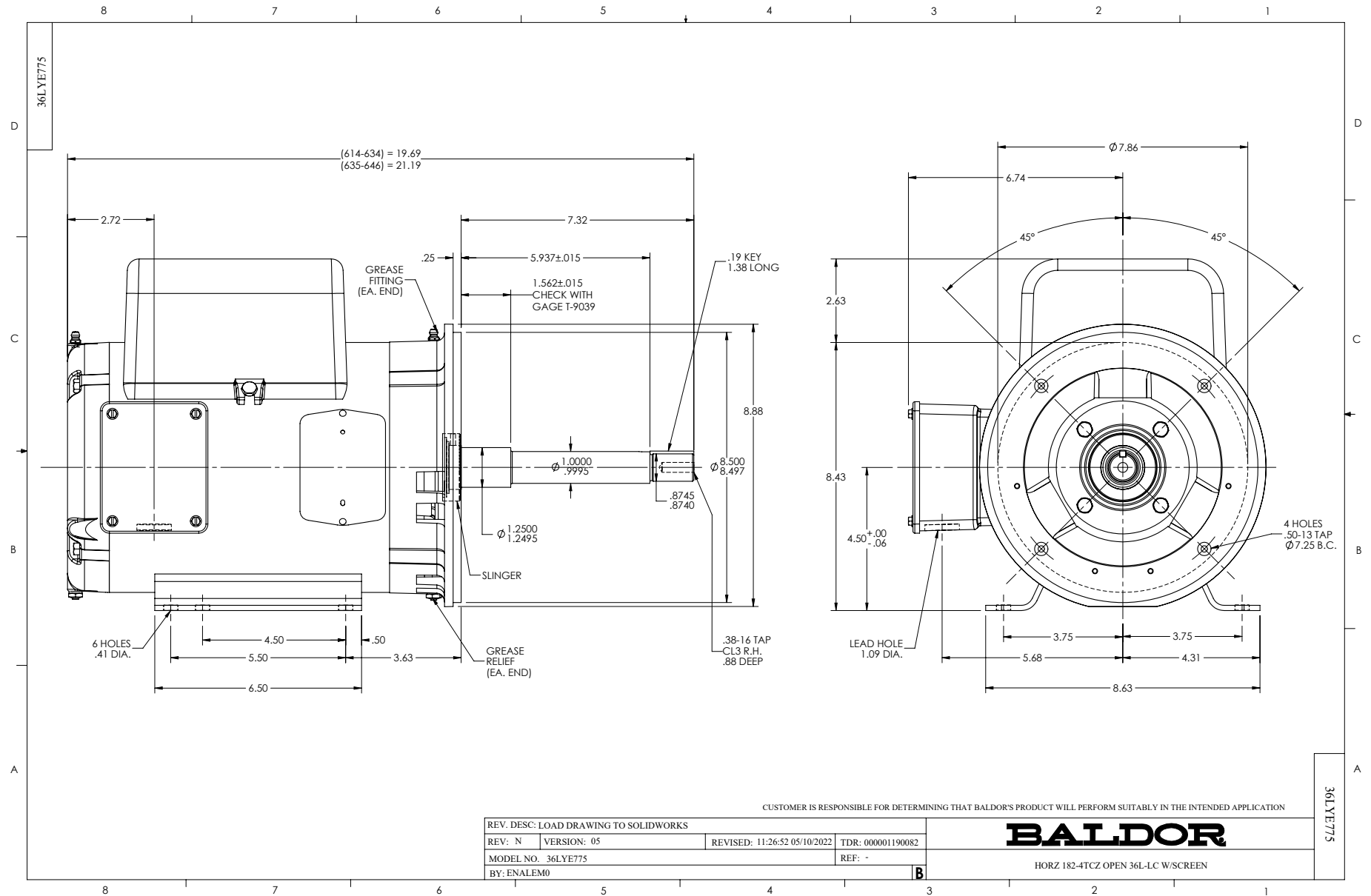
Typical performance - not guaranteed values.

5 HP 1 PH 60 HZ 3450 RPM 230 V 3634L

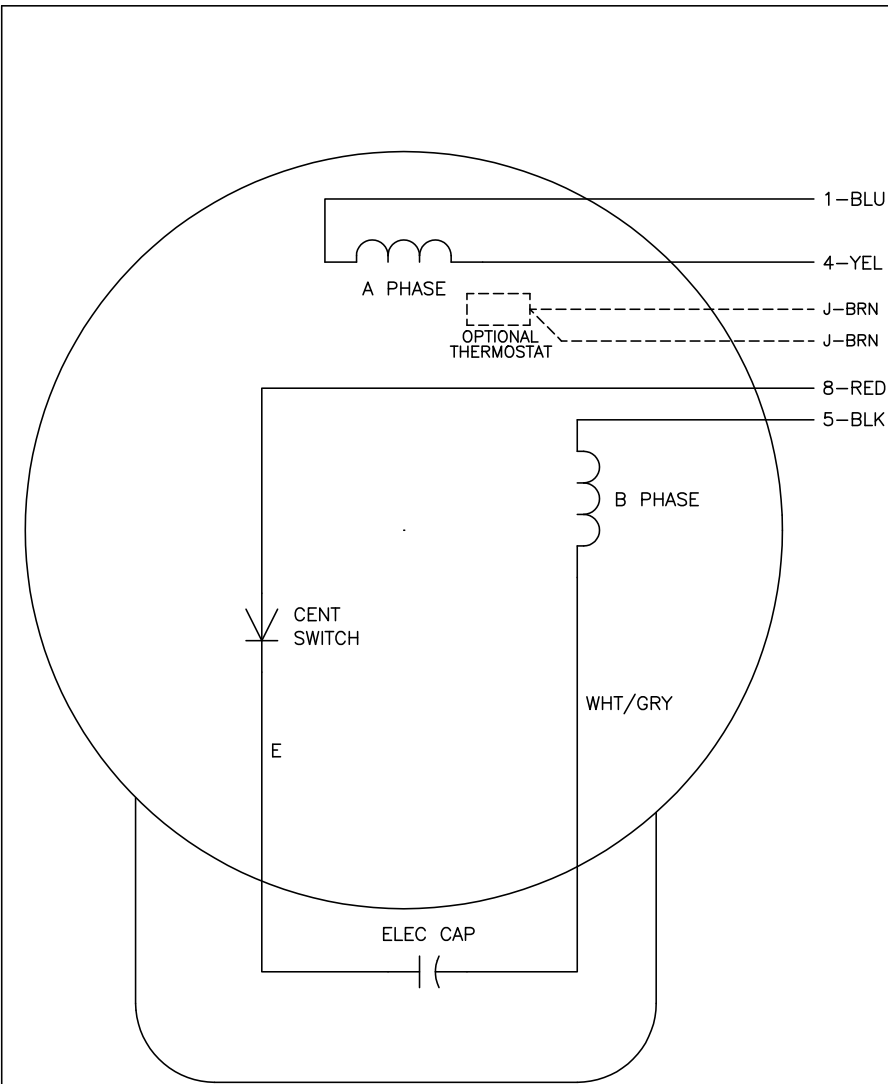
TORQUES (LB-FT): PO=18.7 PU=16 LR=18 LRA=125



11/24/2024 ACPERF, record # 20846



CD0017A01



	LINE A	LINE B
STD	1,8	4,5
OPP	1,5	4,8

NOTES:

1. STANDARD ROTATION IS CCW FACING END OPPOSITE SHAFT EXTENSION.
2. OPTIONAL THERMOSTAT IS PROVIDED WHEN SPECIFIED.
3. MULTIPLE CAPACITORS ARE CONNECTED IN PARALLEL UNLESS OTHERWISE SPECIFIED.
4. LEAD COLORS ARE OPTIONAL. LEADS MUST ALWAYS BE NUMBERED AS SHOWN.

REV. DESC: REVISE TO SHOW OPTIONAL COLORS			
REV. LTR: B	BY: JLP	REVISED: 04/08/99 1:18	TDR: 0178636
10VZ1000		FILE: AAA00007513	MDL: -
		MTL: -	

BALDOR ELECTRIC Co.

TYPE L, SV, REV, 4 LEADS

CD0017A01