



Customer information packet

WCL1508T

5HP, 1725RPM, 1PH, 60HZ, 213TCZ, 3727L, OPSB, F

Class - None

Division - Not Applicable

Specifications

Enclosure	OPSB
Frame	213TCZ
Frame Material	Steel
Frequency	60.00 Hz
Haz Area Class and Group	None
Haz Area Division	Not Applicable
Motor Letter Type	Cap Start, Induction Run
Output @ Frequency	5.000 HP @ 60 HZ
Phase	1
Synchronous Speed @ Frequency	1800 RPM @ 60 HZ
Voltage @ Frequency	230.0 V @ 60 HZ
Agency Approvals	UR CSA
Ambient Temperature	40 °C
Auxillary Box	No Auxillary Box
Auxillary Box Lead Termination	None
Base Indicator	Rigid
Bearing Grease Type	Polyrex EM (-20F +300F)
Blower	None
Current @ Voltage	27.000 A @ 230.0 V
Design Code	L
Drip Cover	No Drip Cover
Duty Rating	CONT
Efficiency @ 100% Load	77.0 %
Electrically Isolated Bearing	Not Electrically Isolated
Feedback Device	NO FEEDBACK
Front Face Code	Standard
Front Shaft Indicator	None
Heater Indicator	No Heater
High Voltage Full Load Amps	27.0 a
Insulation Class	F
Inverter Code	Not Inverter

Part detail

Revision	X
Type	AC
Mech. spec.	37K240
Base	
Status	PRD/A
Elec. spec.	37WGT912
Layout	37LYK240
Eff. date	05-13-2024
CD Diagram	CD0017A01
Poles	04
Leads	2#10 A PH,2#14 B PH
Proprietary	False
Created date	06-23-2006

KVA Code	G
Lifting Lugs	No Lifting Lugs
Locked Bearing Indicator	Locked Bearing
Motor Lead Exit	Ko Box
Motor Lead Quantity/Wire Size	2 @ 10 AWG, A PH
Motor Lead Termination	Flying Leads
Motor Standards	NEMA
Motor Type	3727L
Mounting Arrangement	F1
Number of Poles	4
Overall Length	21.25 IN
Power Factor	78
Product Family	General Purpose
Pulley End Bearing Type	Ball
Pulley Face Code	C-Face
Pulley Shaft Indicator	Standard
Rodent Screen	Included
Service Factor	1.15
Shaft Diameter	0.875 IN
Shaft Extension Location	Pulley End
Shaft Ground Indicator	No Shaft Grounding
Shaft Rotation	Reversible
Shaft Slinger Indicator	No Slinger
Speed	1725 rpm
Speed Code	Single Speed
Starting Method	Direct on line
Thermal Device - Bearing	None
Thermal Device - Winding	None
Vibration Sensor Indicator	No Vibration Sensor
Winding Thermal 1	None
Winding Thermal 2	None

Nameplate

NP1256L										
CAT.NO.	WCL1508T									
SPEC.	37K240T912									
HP	5									
VOLTS	230									
AMP	27									
RPM	1725									
FRAME	213TCZ	HZ	60	PH	1					
SER.F.	1.15	CODE	G	DES	L	CLASS	F			
NEMA-NOM-EFF	77	PF	78							
RATING	40C AMB-CONT									
CC										
DE	6309	ODE	6206							
ENCL	OPSB	SN								

Parts list

Part number	Description	Quantity
SA145182	SA 37K240T912	1.000 ea
RA134343	RA 37K240T912	1.000 ea
EC1216C06SP	ELEC CAP, 216-259 MFD, 250V, 2.06D X 4.	2.000 ea
HA6361A01	LIFTING LUG FOR 37, 39 & 40 FRAME ZINC	2.000 ea
37CB3006	37 CB CASTING W/1.38 LEAD HOLE @ 6:00	1.000 ea
51XW2520A10	.25-20 X .62, TAPTITE II, HEX WSHR SLTD	2.000 ea
11XW1032G06	10-32 X .38, TAPTITE II, HEX WSHR SLTD U	1.000 ea
37EP3203D00	MASTER,ODE,206 BRG,GREASER,RELIEF	1.000 ea
HW4500A01	1641B(ALEMITE)400 UNIV, GREASE FITT	1.000 ea
HW4500A17	317400 ALEMITE GREASE RELIEF	1.000 ea
HA1104A01	RODENT SCREEN 37 FRAME 206 BRG FRONT END	1.000 ea
51XW1032A06	10-32 X .38, TAPTITE II, HEX WSHR SLTD S	4.000 ea
HW1000A10	#10 FLAT WASHER (SAE)	4.000 ea
37AD2005	BAFFLE PLATE, FOR OPSB 1 PHASE	1.000 ea
SP1008A01	BAFFLE, MODEL 36 & 37	1.000 ea
13XF0832A08	8-32 X.50 PAN HD,SLTD, TYPE F SCREW, ZIN	2.000 ea
10XN2520A10	1/4-20X 5/8 HEX HD X	2.000 ea
HW1001A25	LOCKWASHER 1/4, ZINC PLT .493 OD, .255 I	2.000 ea
HW5100A06	W2420-025 WVY WSHR (WB)	1.000 ea
37EP3401A45	PUEP OPEN 309 BRG NO BAFFLE	1.000 ea
HW4500A01	1641B(ALEMITE)400 UNIV, GREASE FITT	1.000 ea
HW4500A17	317400 ALEMITE GREASE RELIEF	1.000 ea
HA1222	RODENT SCREEN - 37 C-FACE MOTORS	1.000 ea
51XW1032A06	10-32 X .38, TAPTITE II, HEX WSHR SLTD S	4.000 ea
HW1000A10	#10 FLAT WASHER (SAE)	4.000 ea
10XN2520A36	1/4-20X 2 1/4 HEX HD X	4.000 ea
HW1001A25	LOCKWASHER 1/4, ZINC PLT .493 OD, .255 I	4.000 ea
XY3118A12	5/16-18 HEX NUT DIRECTIONAL SERRATION	4.000 ea
37CB4516	LIPPED LID FOR 37 FRAME NEC KOBX	1.000 ea
51XW0832A07	8-32 X .44, TAPTITE II, HEX WSHR SLTD SE	4.000 ea
HW4600B67	V-RING SLINGER 1.770 X 2.170 X .28 VITON	1.000 ea

HW2501D13	KEY, 3/16 SQ X 1.375	1.000 ea
HA7000A01	KEY RETAINER 7/8" DIA SHAFT	1.000 ea
85XU0407S04	4X1/4 U DRIVE PIN STAINLESS	2.000 ea
37CB3802SP	CAPACITOR COVER, CAST	1.000 ea
HA7010A01	CAPACITOR RETENTION CLAMP, 6.562 LONG	1.000 ea
MJ1000A02	GREASE, POLYREX EM EXXON	0.050 lb
SP5172A01	37 TYPE L TORQ STAT SWITCH LEAD ASSEMBLY	1.000 ea
WD1000A15	3-520132-2 AMP FLAG (4M/RL NON-CANC/NON-	4.000 ea
51XW0832A07	8-32 X .44, TAPTITE II, HEX WSHR SLTD SE	2.000 ea
LB1624	COMBINED WARNING LABEL, ISO/ANSI PICTOGR	1.000 ea
37AD2001A01	BAFFLE PLATE, PLASTIC 0.63" WIDTH	1.000 ea
HA3104A39	THRUBOLT-5/16-18 X 12.250	4.000 ea
MG1050G01	CELEROL MEDIUM CHARCOAL METALLIC GRAY	0.028 ga
LC0017	CONN LABEL-1 PHASE-SINGLE VOLT-REV ROTNO	1.000 ea
NP1256L	ALUM UL CC INDUSTRIAL MOTOR A60	1.000 ea
GOPA1000	PKG GRP, PRINT PK1026A06	1.000 ea
PK3085X	FOAM SHAFT SUPPORT PRECUT 4-1/4 X 6-3/4	1.000 ea
MN416A01	TAG-INSTAL-MAINT no wire (2500bx)4/22	1.000 ea
FE-0000004	ZRTG FE ASSEMBLY	1.000 ea
PE-0000001	ZRTG PE ASSEMBLY	1.000 ea

AC Induction Motor Performance Data

Record # 61328

Typical performance - not guaranteed values

Winding: 37WGT912-R002		Type: 3727L		Enclosure: OPSB	
Nameplate Data			230 V, 60 Hz: Single Voltage Motor		
Rated Output (HP)	5	Full Load Torque	15.3 LB-FT		
Volts	230	Start Configuration	direct on line		
Full Load Amps	27	Breakdown Torque	43 LB-FT		
R.P.M.	1725	Pull-up Torque	30.8 LB-FT		
Hz	60 Phase	1	Locked-rotor Torque	46.9 LB-FT	
NEMA Design Code	L	KVA Code	G	Starting Current	132 A
Service Factor (S.F.)	1.15		No-load Current	14.3 A	
NEMA Nom. Eff.	77	Power Factor	78	Line-line Res. @ 25°C	0.352 Ω A Ph 1.48 Ω B Ph
Rating - Duty	40C AMB-CONT		Temp. Rise @ Rated Load	68°C	
S.F. Amps			Temp. Rise @ S.F. Load	88°C	

Load Characteristics 230 V, 60 Hz, 5 HP

% of Rated Load	25	50	75	100	125	150	S.F.
Power Factor	38	58	71	78	81	82	80
Efficiency	71.1	79.4	78	77.1	74.1	67.1	75.3
Speed	1781	1766	1749	1728	1699	1653	1711
Line amperes	14.9	17.5	21.9	27.1	33.9	44.4	31.2

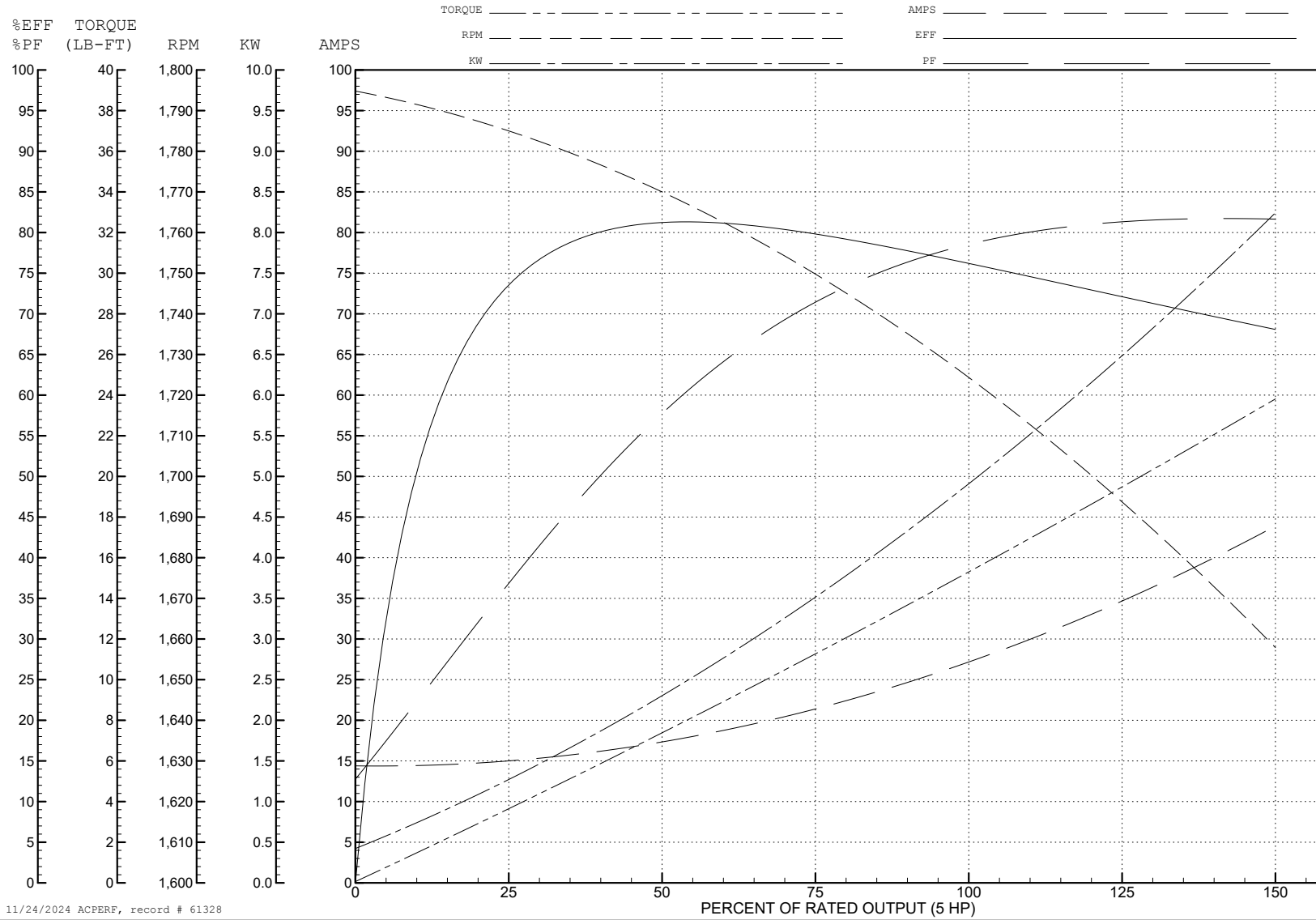
ABB Motors and Mechanical Inc.

WINDING # 37WGT912

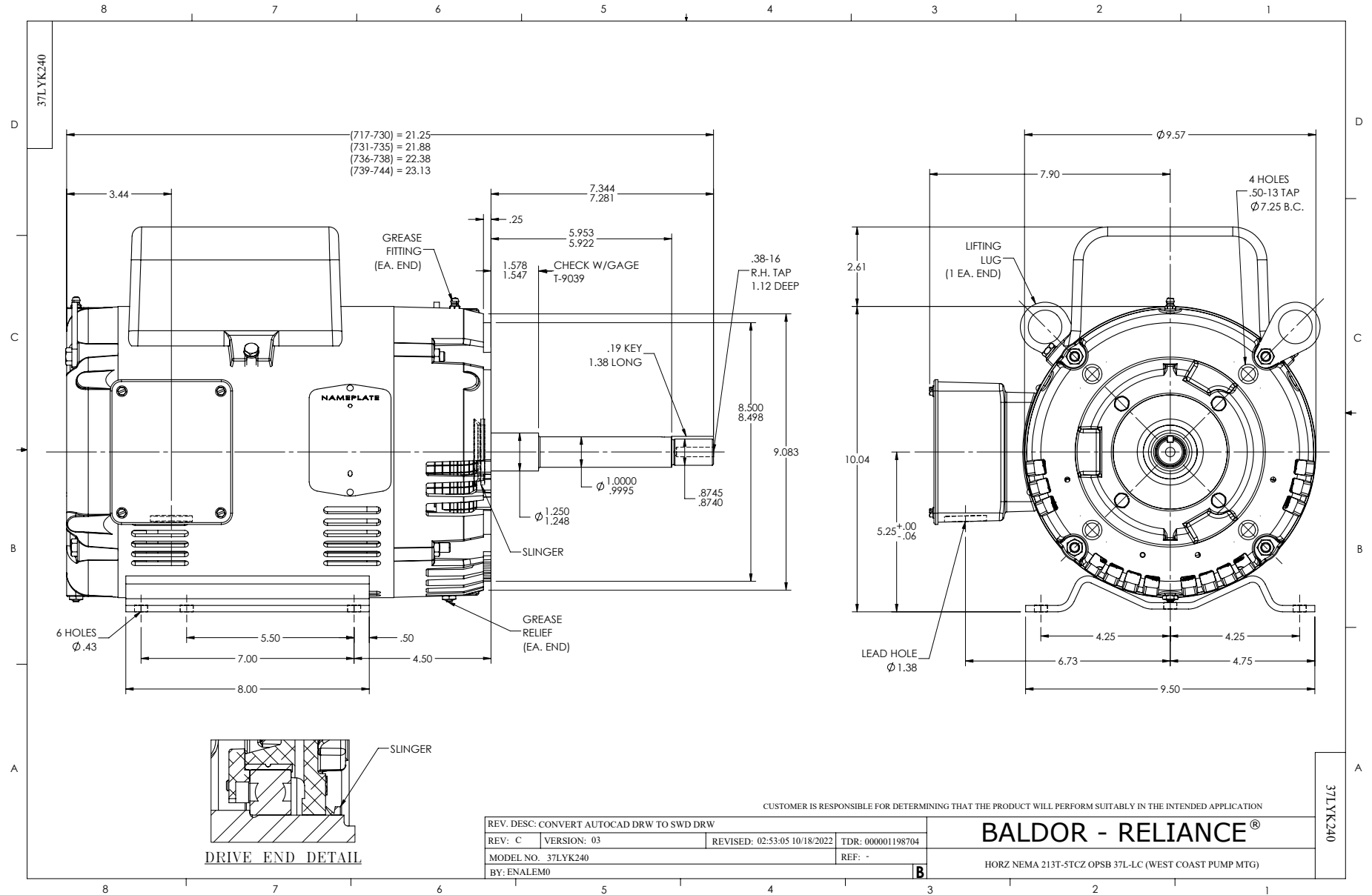
Typical performance - not guaranteed values.

5 HP 1 PH 60 HZ 1725 RPM 230 V 3727L

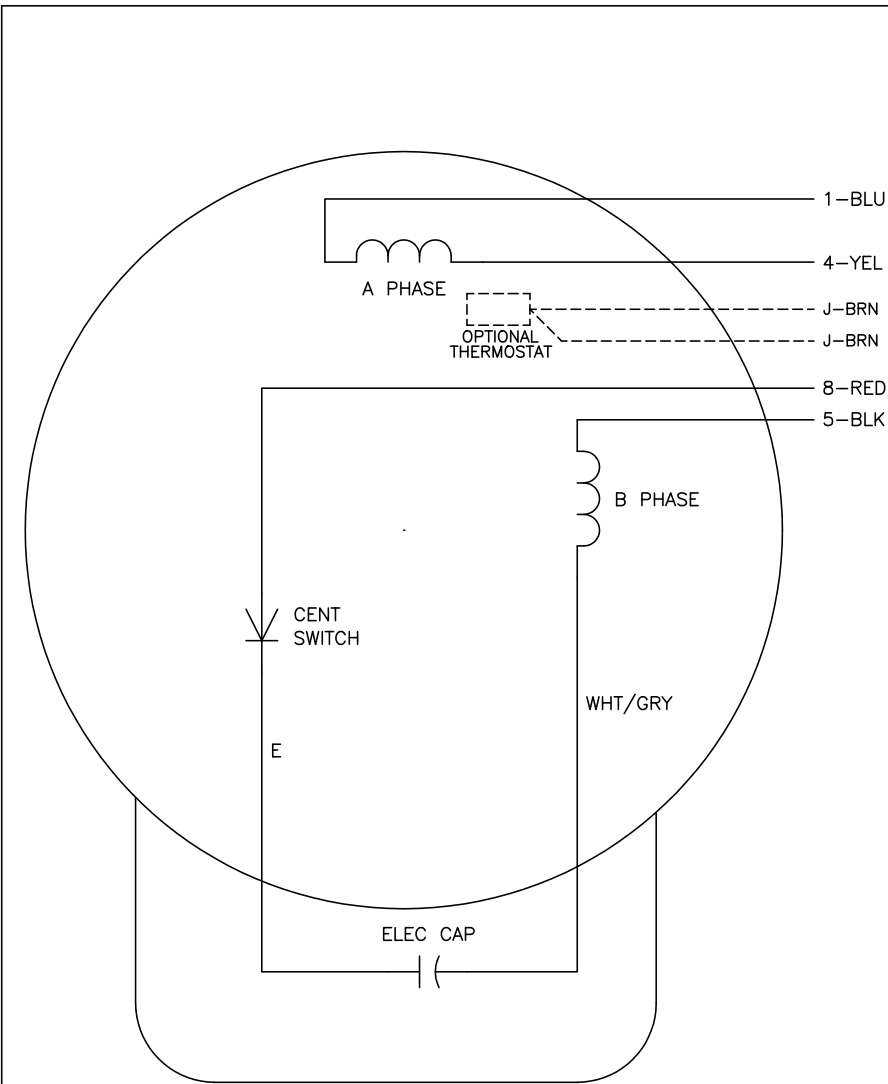
TORQUES (LB-FT): PO=43 PU=30.8 LR=46.9 LRA=132



11/24/2024 ACPERF, record # 61328



CD0017A01



	LINE A	LINE B
STD	1,8	4,5
OPP	1,5	4,8

NOTES:

1. STANDARD ROTATION IS CCW FACING END OPPOSITE SHAFT EXTENSION.
2. OPTIONAL THERMOSTAT IS PROVIDED WHEN SPECIFIED.
3. MULTIPLE CAPACITORS ARE CONNECTED IN PARALLEL UNLESS OTHERWISE SPECIFIED.
4. LEAD COLORS ARE OPTIONAL. LEADS MUST ALWAYS BE NUMBERED AS SHOWN.

REV. DESC: REVISE TO SHOW OPTIONAL COLORS			
REV. LTR: B	BY: JLP	REVISED: 04/08/99 1:18	TDR: 0178636
10VZ1000		FILE: AAA00007513	MDL: -
		MTL: -	

BALDOR ELECTRIC Co.

TYPE L, SV, REV, 4 LEADS

CD0017A01