



---

# Customer information packet

## WDL3507

.75HP, 1750RPM, 1PH, 60HZ, 56, 3522L, TEFC, F1

Class - None

Division - Not Applicable

## Specifications

Enclosure	TEFC
Frame	56
Frame Material	Steel
Frequency	60.00 Hz
Haz Area Class and Group	None
Haz Area Division	Not Applicable
Motor Letter Type	Cap Start, Induction Run
Output @ Frequency	.750 HP @ 60 HZ
Phase	1
Synchronous Speed @ Frequency	1800 RPM @ 60 HZ
Voltage @ Frequency	115.0 V @ 60 HZ 230.0 V @ 60 HZ
Agency Approvals	CSA UR
Ambient Temperature	40 °C
Auxillary Box	No Auxillary Box
Auxillary Box Lead Termination	None
Base Indicator	Rigid
Bearing Grease Type	Polyrex EM (-20F +300F)
Blower	None
Current @ Voltage	5.000 A @ 230.0 V 10.000 A @ 115.0 V
Design Code	N
Drip Cover	No Drip Cover
Duty Rating	CONT
Efficiency @ 100% Load	70.0 %
Electrically Isolated Bearing	Not Electrically Isolated
Feedback Device	NO FEEDBACK
Front Shaft Indicator	None
Heater Indicator	No Heater
High Voltage Full Load Amps	5.0 a
Insulation Class	F

## Part detail

Revision	E
Type	AC
Mech. spec.	35J271
Base	
Status	PRD/A
Elec. spec.	35WGG393
Layout	35LYJ271
Eff. date	08-07-2024
CD Diagram	CD0001
Poles	04
Leads	6#18
Proprietary	False
Created date	08-01-2022

<b>Inverter Code</b>	Not Inverter
<b>KVA Code</b>	L
<b>Lifting Lugs</b>	No Lifting Lugs
<b>Locked Bearing Indicator</b>	No Locked Bearing
<b>Motor Lead Quantity/Wire Size</b>	6 @ 18 AWG
<b>Motor Lead Termination</b>	Flying Leads
<b>Motor Standards</b>	NEMA
<b>Motor Type</b>	3522L
<b>Mounting Arrangement</b>	F1
<b>Number of Poles</b>	4
<b>Overall Length</b>	13.22 IN
<b>Power Factor</b>	69
<b>Product Family</b>	Wash Down
<b>Pulley End Bearing Type</b>	Sealed Bearing
<b>Pulley Face Code</b>	Standard
<b>Pulley Shaft Indicator</b>	Standard
<b>Rodent Screen</b>	None
<b>Service Factor</b>	1.25
<b>Shaft Diameter</b>	0.625 IN
<b>Shaft Ground Indicator</b>	No Shaft Grounding
<b>Shaft Rotation</b>	Reversible
<b>Shaft Slinger Indicator</b>	Shaft Slinger
<b>Speed</b>	1750 rpm
<b>Speed Code</b>	Single Speed
<b>Starting Method</b>	Direct on line
<b>Thermal Device - Bearing</b>	None
<b>Thermal Device - Winding</b>	None
<b>Vibration Sensor Indicator</b>	No Vibration Sensor
<b>Winding Thermal 1</b>	None
<b>Winding Thermal 2</b>	None

**Nameplate**

<b>NP1496L</b>									
<b>CAT.NO.</b>	WDL3507								
<b>SPEC.</b>	35J271G393								
<b>HP</b>	.75								
<b>VOLTS</b>	115/230								
<b>AMP</b>	10/5								
<b>RPM</b>	1750								
<b>FRAME</b>	56		<b>HZ</b>	60		<b>PH</b>	1		
<b>SER.F.</b>	1.25	<b>CODE</b>	L	<b>DES</b>	N	<b>CLASS</b>	F		
<b>NEMA-NOM-EFF</b>	70	<b>PF</b>	69						
<b>RATING</b>	40C AMB-CONT								
<b>CC</b>									
<b>DE</b>	6205		<b>ODE</b>	6203					
<b>ENCL</b>	TEFC	<b>SN</b>							
	SFA 12.6/6.3								

## Parts list

Part number	Description	Quantity
SA407298	SA 35J271G393	1.000 ea
RA398797	RA 35J271G393	1.000 ea
EC1540A06SP	ELEC CAP, 540-648 MFD, 125V, 2.06D X 4.	1.000 ea
NS2512A01	INSULATOR, CONDUIT BOX X	1.000 ea
35CB3008A01G	SPL CONDUIT BOX, MACHINED GRAY	1.000 ea
35GS1039	05 MOLDED GASKET W/LIP, 1.12 LEAD HOLE,	1.000 ea
51XB1016A08	10-16X 1/2HXWSSLD SERTYB	2.000 ea
11XW1032G06	10-32 X .38, TAPTITE II, HEX WSHR SLTD U	1.000 ea
35EP3122B00W	MASTER ODE,203 BRG,.683SH,.125NPT DRNS,F	1.000 ea
HW4072A01	BLACK DRAIN PLUG FOR .125 NPT	3.000 ea
51XW0832A07	8-32 X .44, TAPTITE II, HEX WSHR SLTD SE	2.000 ea
51XB1016A06	10-16X3/8 HXWSSLD SERTYB	4.000 ea
35CB4802A02SP	CAPACITOR COVER, STAMPED X	1.000 ea
HW5100A03	WAVY WASHER (W1543-017)	1.000 ea
35EP3123E00W	MASTER DE,205 BRG,1.623SH,.125NPT DRNS(W	1.000 ea
HW4072A01	BLACK DRAIN PLUG FOR .125 NPT	3.000 ea
HW4600B49	SEAL 0.938 X 1.624 X 0.250 SINGLE LIP DB	1.000 ea
XY1032S02	10-32 HEX NUT R.H. S STL	4.000 ea
35FH4005A32SP	IEC FH NO GRSR W/3 HOLES - PRIMED	1.000 ea
51XB1214A16	12-14X1.00 HXWSSLD SERTYB	1.000 ea
11XW1032S06	10-32 X .38, TAPTITE II, HEX WSHR SLTD U	3.000 ea
35CB4522	35 LIPPED CB LID PRIMED	1.000 ea
35GS1030A02	35 GS FOR CB LID - WHITE NEOPRENE	1.000 ea
59XW0832S07	TAPTITE II,HEX WSHR UNSLTD SER,410 S.S.,	4.000 ea
HW4600B39SP	V-RING SLINGER 0.550 X 0.790 X .18 VITON	1.000 ea
HW4600B46	V-RING SLINGER 0.875 X 1.420 X .24 VITON	1.000 ea
HW2502D13	SS KEY, 3/16 SQ X 1.375	1.000 ea
HA7000A04	KEY RETAINER 0.625 DIA SHAFTS	1.000 ea
85XU0407S04	4X1/4 U DRIVE PIN STAINLESS	2.000 ea
MJ5001A27	32220KN GRAY SEALER *MIN BUY 4 QTS=1GAL	0.001 qt
LB1164	LABEL,WARNING AND DRAIN	1.000 ea

HA5027A02	HA4054 T-DRAIN X2 BAGGED WITH LABEL	1.000 ea
WD1000A15	3-520132-2 AMP FLAG (4M/RL NON-CANC/NON-	2.000 ea
MJ1000A02	GREASE, POLYREX EM EXXON	0.050 lb
35FN3002A05SP	EXFN, PLASTIC, 6.376 OD, .638 ID	1.000 ea
35GS1016A03	GASKET, CAPAC BOX FOR 35CB4802 WD MOTORS	1.000 ea
MG1025Z02	ACTIVATOR WILKOFASST 060.02HF	0.010 ga
MG1025W01	WILKOFASST, 781.01, SIGNAL WHITE #9003	0.017 ga
HA3100S15	THRUBOLT - 10-32 X 9.375	4.000 ea
SP5051A24	MODEL 35 TORQ STATIONARY SWITCH FOR "L"	1.000 ea
LC0001	CONN LABEL TYPE L, 6 LEAD, DUAL VOLTS, R	1.000 ea
NP1496L	SS WD UL CC	1.000 ea
35PA1066	PKG GRP, PRINT PK1008A06	1.000 ea
MN416A01	TAG-INSTAL-MAINT no wire (2500bx)4/22	1.000 ea
FE-0000001	ZRTG FE ASSEMBLY	1.000 ea
PE-0000002	ZRTG PE ASSEMBLY	1.000 ea

**AC Induction Motor Performance Data**

Record # 89059

Typical performance - not guaranteed values

Winding: 35WGG393-R001		Type: 3522L		Enclosure: TEFC	
<b>Nameplate Data</b>			<b>115 V, 60 Hz: Low Voltage Connection</b>		
Rated Output (HP)	.75	Full Load Torque	2.24 LB-FT		
Volts	115/230	Start Configuration	direct on line		
Full Load Amps	8.7/4.35	Breakdown Torque	4.86 LB-FT		
R.P.M.	1720	Pull-up Torque	4 LB-FT		
Hz	60	Phase	1	Locked-rotor Torque	8.91 LB-FT
NEMA Design Code	N	KVA Code	K	Starting Current	59.09 A
Service Factor (S.F.)	1.25	No-load Current	4.92 A		
NEMA Nom. Eff.	70	Power Factor	79	Line-line Res. @ 25°C	1.14 Ω A Ph 1.85 Ω B Ph
Rating - Duty	40C	AMB-CONT	Temp. Rise @ Rated Load 91°C		
S.F. Amps	10.9/5.45	Temp. Rise @ S.F. Load 119°C			Locked-rotor Power Factor 97
			Rotor inertia 0.159 lb-ft <sup>2</sup>		

**Load Characteristics 115 V, 60 Hz, 0.75 HP**

% of Rated Load	25	50	75	100	125	150	S.F.
Power Factor	41	58	70	77	82	85	81
Efficiency	57.2	69.2	71.9	72.1	70	66	70.9
Speed	1784	1770	1754	1737	1716	1687	1716
Line amperes	5.24	6.06	7.22	8.64	10.38	12.49	10.3

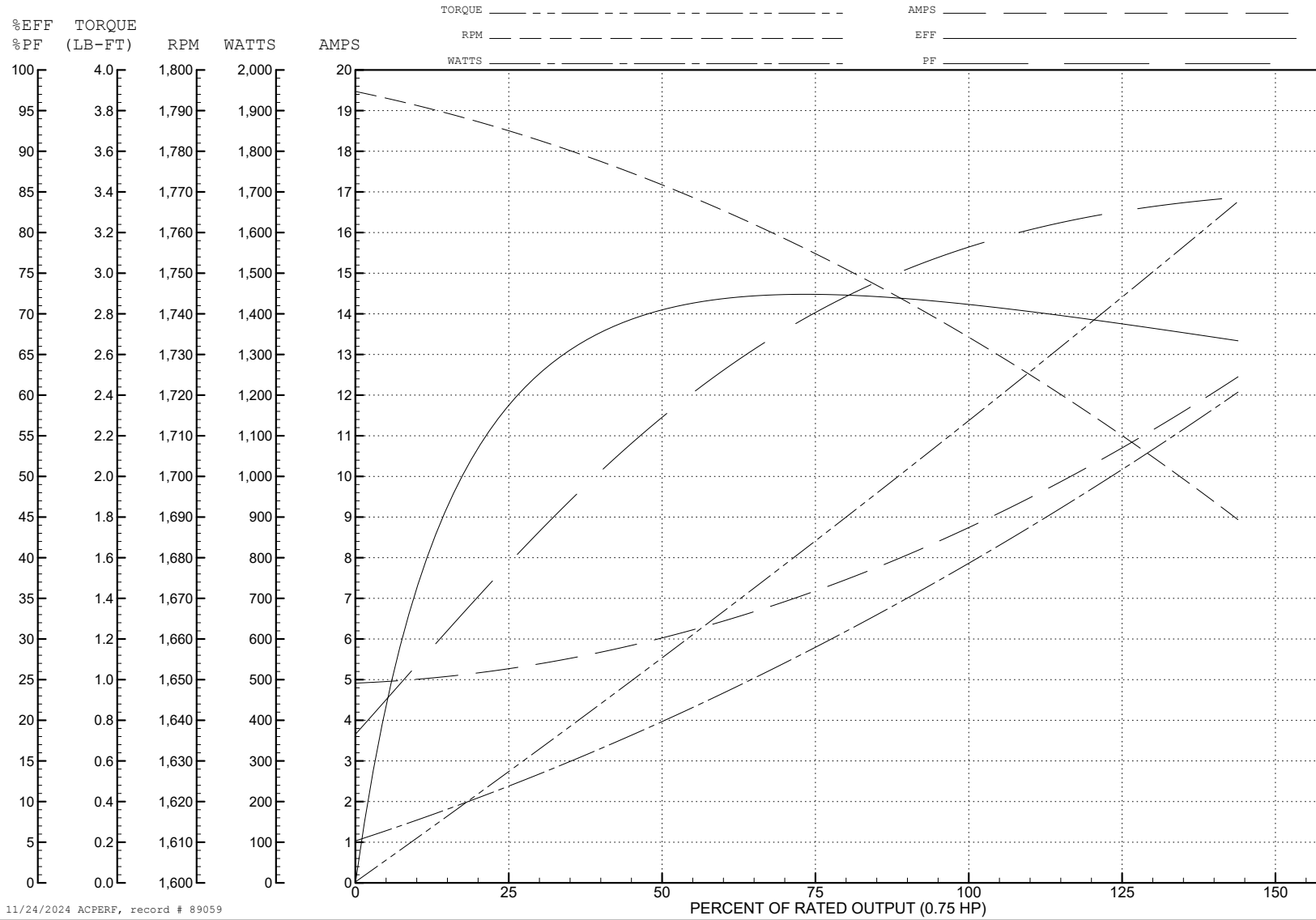
ABB Motors and Mechanical Inc.

WINDING # 35WGG393

Typical performance - not guaranteed values.

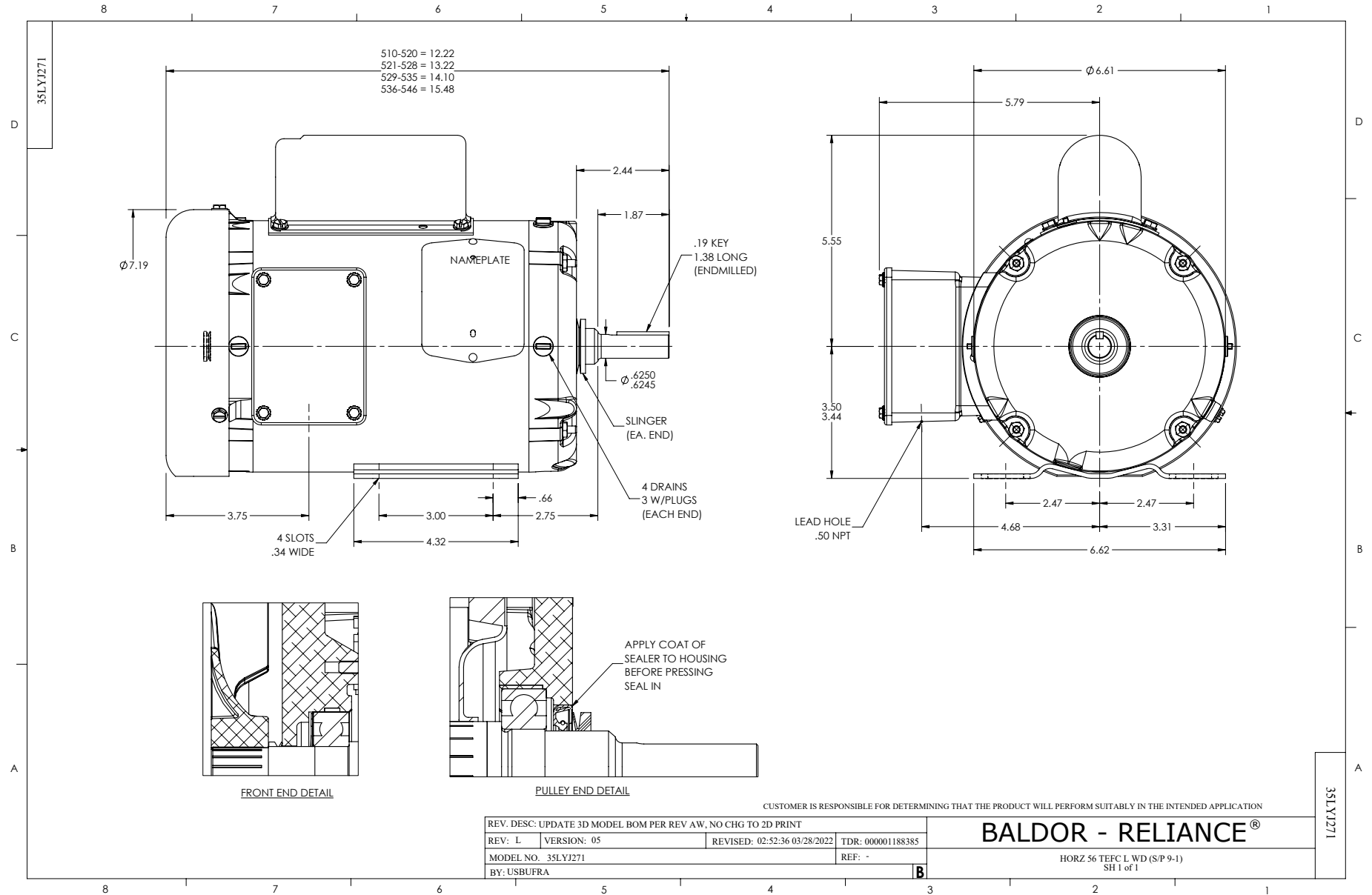
0.75 HP 1 PH 60 HZ 1720 RPM 115 V 3522L

TORQUES (LB-FT): PO=4.86 PU=4 LR=8.91 LRA=59.09

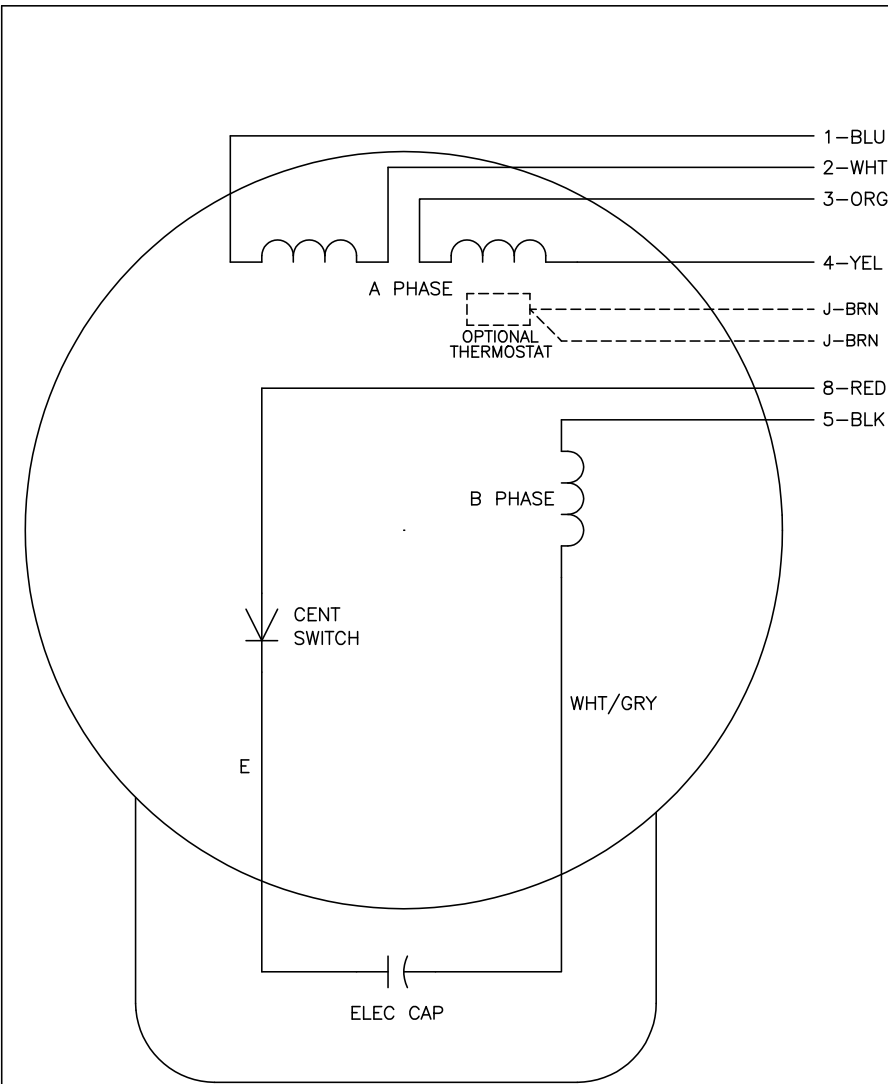


11/24/2024 ACPERF, record # 89059





CD0001



	LINE A	LINE B	JOIN
HIGH STD	1	4,5	2,3,8
HIGH OPP	1	4,8	2,3,5
LOW STD	1,3,8	2,4,5	-
LOW OPP	1,3,5	2,4,8	-

NOTES:

1. STANDARD ROTATION IS CCW FACING END OPPOSITE SHAFT EXTENSION.
2. OPTIONAL THERMOSTAT IS PROVIDED WHEN SPECIFIED.
3. MULTIPLE CAPACITORS ARE CONNECTED IN PARALLEL UNLESS OTHERWISE SPECIFIED.
4. LEAD COLORS ARE OPTIONAL. LEADS MUST ALWAYS BE NUMBERED AS SHOWN.

REV. DESC: REVISE TO SHOW OPTIONAL COLORS			
REV. LTR: D	BY: JLP	REVISED: 04/08/99 1:16	TDR: 0178636
100000		FILE: AAA00007405	MDL: -
		MTL: -	

**BALDOR ELECTRIC Co.**

TYPE L, DV, REV, 6 LEADS

CD0001