

BALDOR • RELIANCE

Customer information packet

YPC345A

.5HP, 1625RPM, 1PH, 60HZ, 56YZ, 3414C, TEAO, F1

Class - None

Division - Not Applicable

Specifications

Enclosure	TEAO
Frame	56YZ
Frame Material	Steel
Frequency	60.00 Hz
Haz Area Class and Group	None
Haz Area Division	Not Applicable
Motor Letter Type	Oil Capacitor Start and Run
Output @ Frequency	.500 HP @ 60 HZ
Phase	1
Synchronous Speed @ Frequency	1800 RPM @ 60 HZ
Voltage @ Frequency	115.0 V @ 60 HZ
Agency Approvals	UR CSA
Ambient Temperature	40 °C
Auxillary Box	No Auxillary Box
Auxillary Box Lead Termination	None
Base Indicator	Yoke Pedestal
Bearing Grease Type	Polyrex EM (-20F +300F)
Blower	None
Current @ Voltage	5.100 A @ 115.0 V
Drip Cover	No Drip Cover
Duty Rating	CONT
Electrically Isolated Bearing	Not Electrically Isolated
Feedback Device	NO FEEDBACK
Front Face Code	Terminal Panel
Front Shaft Indicator	None
Heater Indicator	No Heater
High Voltage Full Load Amps	5.1 a
Insulation Class	B
Inverter Code	Not Inverter
KVA Code	D
Lifting Lugs	No Lifting Lugs

Part detail

Revision	G
Type	AC
Mech. spec.	34M197
Base	
Status	PRD/A
Elec. spec.	34WGR236
Layout	34LYM197
Eff. date	09-18-2023
CD Diagram	CD0798
Poles	04
Leads	5#18
Proprietary	False
Created date	07-01-2015

Locked Bearing Indicator	No Locked Bearing
Motor Lead Exit	Terminal Panel Or Lead Hole
Motor Lead Quantity/Wire Size	5 @ 18 AWG
Motor Lead Termination	None
Motor Standards	NEMA
Motor Type	3414C
Mounting Arrangement	F1
Number of Poles	4
Overall Length	10.68 IN
Product Family	General Purpose
Pulley End Bearing Type	Ball
Pulley Face Code	Standard
Pulley Shaft Indicator	Flat Only (When Non-STD)
Rodent Screen	None
RoHS Status	ROHS COMPLIANT
Service Factor	1.00
Shaft Diameter	0.625 IN
Shaft Extension Location	Pulley End
Shaft Ground Indicator	No Shaft Grounding
Shaft Rotation	Reversible: Connected Standard
Shaft Slinger Indicator	Shaft Slinger
Speed	1625 rpm
Speed Code	Single Speed
Starting Method	Direct on line
Thermal Device - Bearing	None
Thermal Device - Winding	None
Vibration Sensor Indicator	No Vibration Sensor
Winding Thermal 1	Automatic Thermal Overload
Winding Thermal 1 Location	WG

Nameplate

NP1257L									
CAT.NO.	YPC345A								
SPEC.	34M197R236G1								
HP	.5								
VOLTS	115								
AMP	5.1								
RPM	1625								
FRAME	56YZ		HZ	60		PH	1		
SER.F.	1.00	CODE	D	DES	-	CL	B		
NEMA-NOM-EFF		PF							
RATING	40C AMB-CONT								
CC									
DE	6203	ODE	6203						
ENCL	TEAO	SN							

Parts list

Part number	Description	Quantity
SA303292	SA 34M197R236G1	1.000 ea
RA290412	RA 34M197R236G1	1.000 ea
OC3030F14SP	CYL OIL CAP 30MFD/370V AEROVOX 1 3/4 X	1.000 ea
RM1001A01	GROMMET "MIDSTATES"	1.000 ea
WD4100A42	CAPLUG BPF-3/4, FOR 1/2" NPT OR 3/4 HOLE	1.000 ea
11XW0832G06	#8-32 X 3/8, TAPTITE II, HEX WSHR SLTD	1.000 ea
34EP3204D01	SPL FR ENDPLATE 34L - ENCL	1.000 ea
51XW0832A07	8-32 X .44, TAPTITE II, HEX WSHR SLTD SE	3.000 ea
HW5100A03	WAVY WASHER (W1543-017)	1.000 ea
33CB4800A02	CAPACITOR COVER, STAMPED	1.000 ea
34GS5003	FOAM SLEEVE, ID = 2 1/16" X 3 3/8"	1.000 ea
35GS3001A02	GASKET, CA.COVER, 5.38 LONG .06 CS301	1.000 ea
51XB1016A05	10-16X5/16HX WA SL SR TYB (F/S)	2.000 ea
34EP3109D01	PU ENDPLATE, MACH ENCL, 5.125 B.C.	1.000 ea
XY0832A02	8-32 HEX NUT	4.000 ea
34CB4501SP	TERMINAL BOX LID, STAMPED X (PLATED)	1.000 ea
34GS1005	GASKET, TERM PLATE LID	1.000 ea
51XW0832A07	8-32 X .44, TAPTITE II, HEX WSHR SLTD SE	2.000 ea
HA1005A05SP	SLINGER, OD 1.50, ID .659, 203 BRG	1.000 ea
HW1000A08	#8 SAE FLAT WASHER	4.000 ea
85XU0407S04	4X1/4 U DRIVE PIN STAINLESS	2.000 ea
WD1000A16	2-520128-2 AMP FLAG TERMINAL(4M/RL)	5.000 ea
MG1050G01	CELEROL MEDIUM CHARCOAL METALLIC GRAY	0.014 ga
SP5076SP	MODEL 34 TERMINAL PANEL WITH QUICK CONNE	1.000 ea
HA3169A25	THRUBOLT #8-32 THDS X 8.688" LONG	4.000 ea
LB1118	LABEL,WARNING (ROLL LABEL)	1.000 ea
LC0085	CONNECTION LABEL	1.000 ea
NP1257L	ALUM UL CC THERMAL REV MTG	1.000 ea
MN416A01	TAG-INSTAL-MAINT no wire (2500bx)4/22	1.000 ea
36PA1000	PKG GRP, PRINT PK1016A06	1.000 ea
PK3083	STYROFOAM PACKING CRADLE	1.000 ea

PK3088

MICROFOAM, 8"X"8 PERF. SHEETS

1.000 ea

AC Induction Motor Performance Data

Record # 49836

Typical performance - not guaranteed values

Winding: 34WGR236-R001		Type: 3414C	Enclosure: TEAO	
Nameplate Data			115 V, 60 Hz: Single Voltage Motor	
Rated Output (HP)	.5	Full Load Torque	1.62 LB-FT	
Volts	115	Start Configuration	direct on line	
Full Load Amps	5.1	Breakdown Torque	2.8 LB-FT	
R.P.M.	1625	Pull-up Torque	0.382 LB-FT	
Hz	60 Phase	1	Locked-rotor Torque	0.512 LB-FT
NEMA Design Code	- KVA Code	D	Starting Current	17.7 A
Service Factor (S.F.)		1	No-load Current	1.75 A
NEMA Nom. Eff.	0 Power Factor	0	Line-line Res. @ 25°C	2.1667 Ω A Ph 5.2933 Ω B Ph
Rating - Duty	40C AMB-CONT		Temp. Rise @ Rated Load	

Load Characteristics 115 V, 60 Hz, 0.5 HP

% of Rated Load	25	50	75	100	125	150
Power Factor	87	92	95	96	95	94
Efficiency	42.3	63.6	70.2	70.9	68.3	59.6
Speed	1769.5	1751.8	1725.8	1692.3	1650.7	1563.7
Line amperes	2.36	2.99	3.94	5.02	6.3	8.34

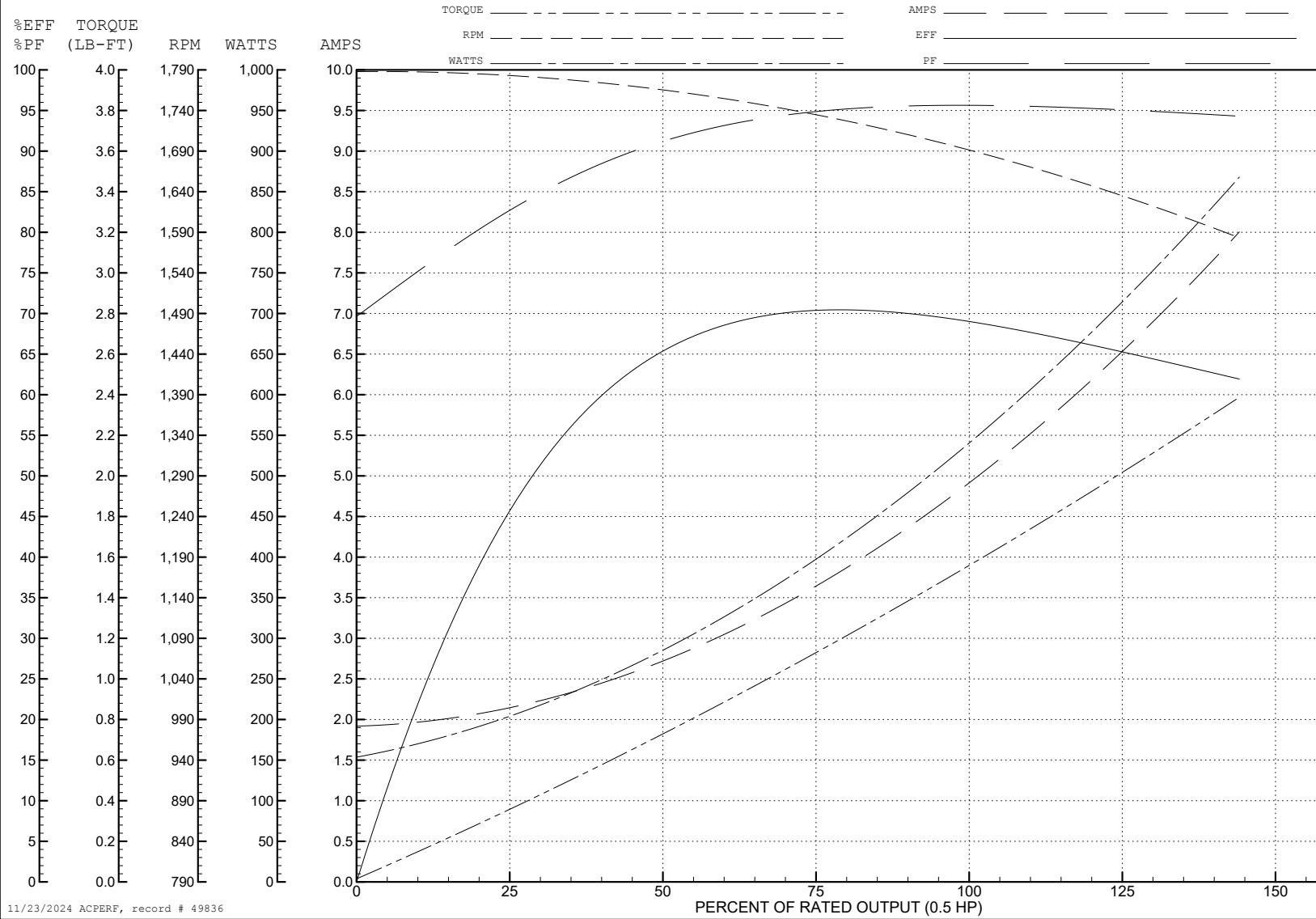
ABB Motors and Mechanical Inc.

WINDING # 34WGR236

Typical performance - not guaranteed values.

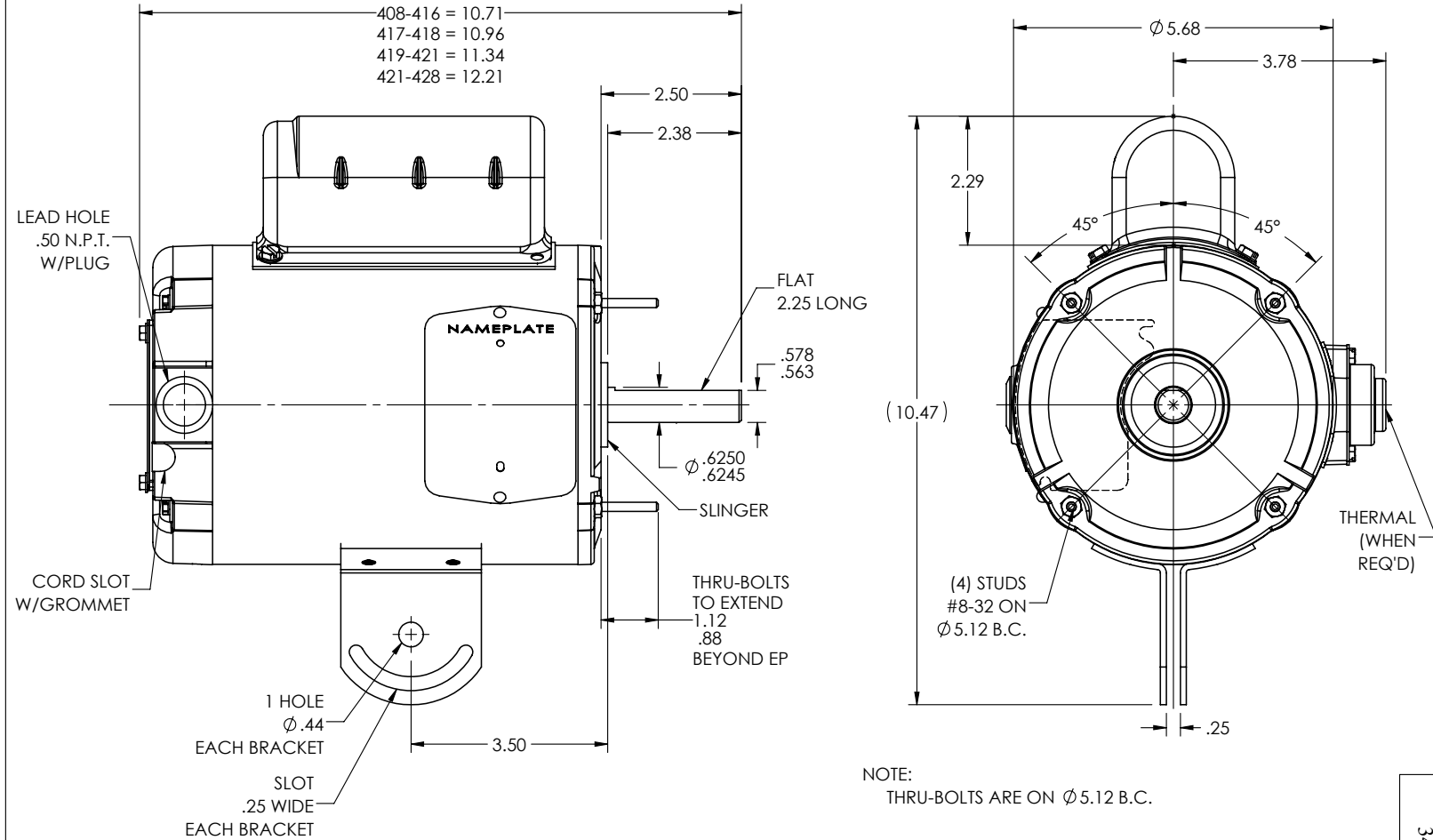
0.5 HP 1 PH 60 HZ 1625 RPM 115 V 3414C

TORQUES (LB-FT): PO=2.8 PU=0.382 LR=0.512 LRA=17.7



11/23/2024 ACPERF, record # 49836

34LYM197



NOTE:
THRU-BOLTS ARE ON Ø 5.12 B.C.

CUSTOMER IS RESPONSIBLE FOR DETERMINING THAT THE PRODUCT WILL PERFORM SUITABLY IN THE INTENDED APPLICATION

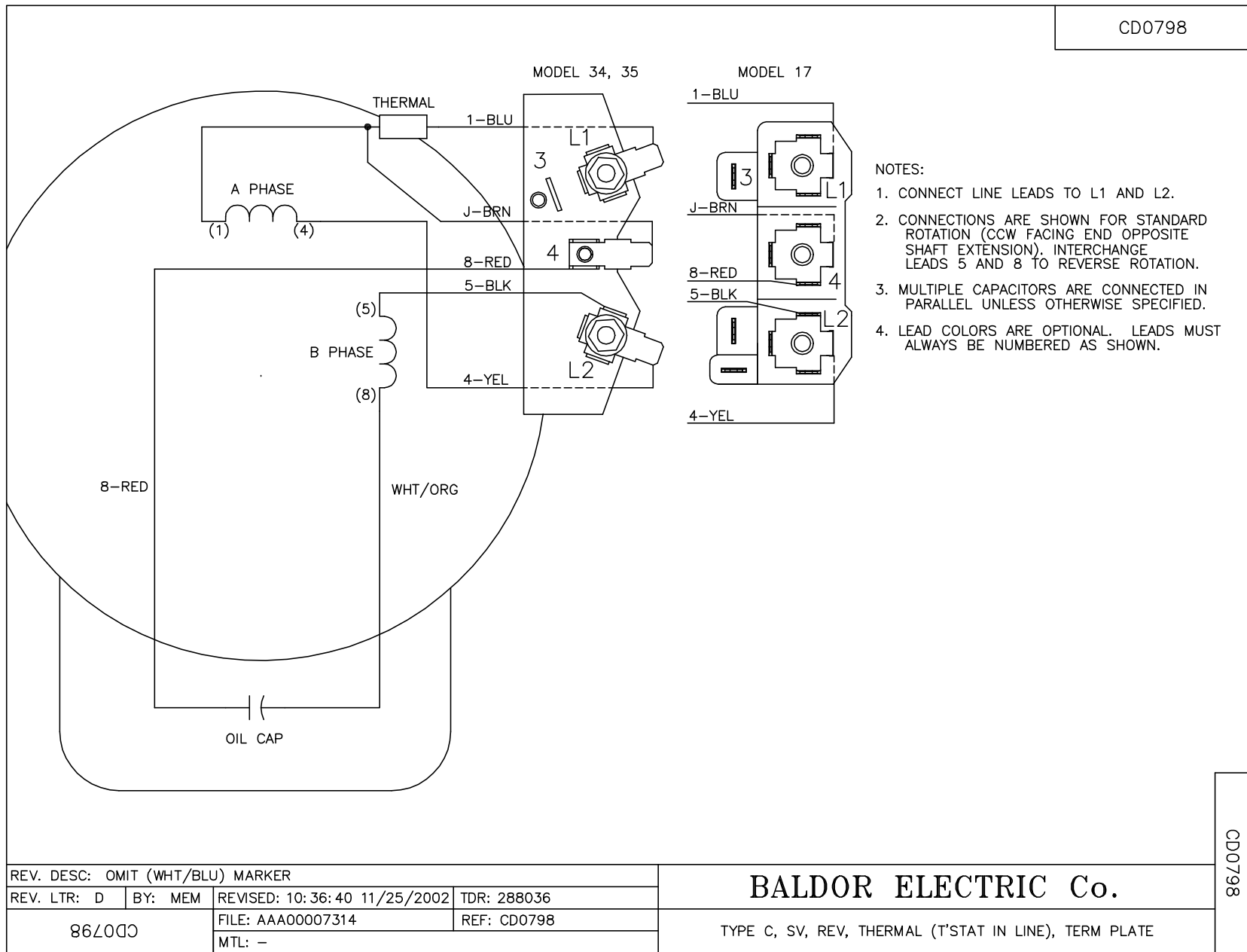
REV. DESC: LOAD TO SOLIDWORKS - REV A			
REV: B	VERSION: 02	REVISED: 11:41:47 05/11/2023	TDR: 000001201165
34LYM197	MODEL NO. 34LYM197	REF: -	
	BY: ENFRAJ0		

BALDOR - RELIANCE®

PED MOUNT 34C NEMA 56YZ TEAO TERM PANEL, EXT TBLTS

34LYM197

CD0798



REV. DESC: OMIT (WHT/BLU) MARKER			
REV. LTR: D	BY: MEM	REVISED: 10:36:40 11/25/2002	TDR: 288036
867000		FILE: AAA00007314	REF: CD0798
		MTL: -	

BALDOR ELECTRIC Co.

TYPE C, SV, REV, THERMAL (T^{STAT} IN LINE), TERM PLATE

CD0798